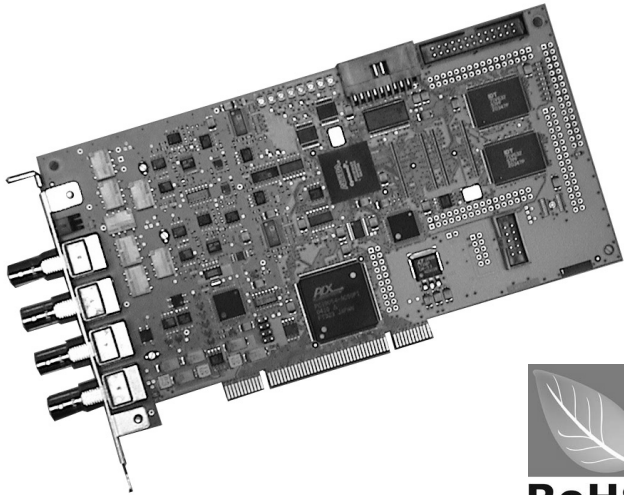


PCI Digitizers
BY ALAZARTECH

ATS330 User Manual

**12 Bit, 50 MS/s
Waveform Digitizer for PCI Bus**



RoHS
compliant
2002/95/EC

Written for Hardware Version 1.2
October 2007 Edition
Part Number: 330-USR-2

AlazarTech Contact Information

AlazarTech, Inc.
3551 St-Charles, Unit 640
Kirkland, Quebec
Canada H9H 3C4

Telephone: (514) 633-0001
Fax: (514) 633-0021

E-mail: info@alazartech.com
Web site: www.alazartech.com

To comment on the documentation for ATS330, send e-mail to support@alazartech.com.

Information required when contacting AlazarTech for technical support:

Owned by: _____

Serial Number: _____

Purchase Date: _____

Purchased From: _____

Software Driver Version: _____

SDK Version: _____

AlazarDSO Version: _____

Operating System: _____

Important Information

Warranty

The ATS330 is warranted against defects in materials and workmanship for a period of one year from the date of shipment, as evidenced by receipts or other documentation. AlazarTech, Inc. will, at its option, repair or replace equipment that proves to be defective during the warranty period. This warranty includes parts and labor.

The media on which you receive AlazarTech, Inc. software are warranted not to fail to execute programming instructions, due to defects in materials and workmanship, for a period of 90 days from date of shipment, as evidenced by receipts or other documentation. AlazarTech, Inc. will, at its option, repair or replace software media that do not execute programming instructions if AlazarTech, Inc. receives notice of such defects during the warranty period. AlazarTech, Inc. does not warrant that the operation of the software shall be uninterrupted or error free.

A Return Material Authorization (RMA) number must be obtained from the factory and clearly marked on the outside of the package before any equipment will be accepted for warranty work. AlazarTech, Inc. will pay the shipping costs of returning to the owner parts that are covered by warranty.

AlazarTech, Inc. believes that the information in this document is accurate. The document has been carefully reviewed for technical accuracy. In the event that technical or typographical errors exist, AlazarTech, Inc. reserves the right to make changes to subsequent editions of this document without prior notice to holders of this edition. AlazarTech, Inc. may also make improvements and/or changes in the products and/or programs described in this document at any time. The reader should consult AlazarTech, Inc. if errors are suspected. In no event shall AlazarTech, Inc. be liable for any damages arising out of or related to this document or the information contained in it. The latest user manual can be found on the AlazarTech, Inc. web page at www.alazartech.com/support/downloads.htm.

EXCEPT AS SPECIFIED HEREIN, ALAZARTECH, INC. MAKES NO WARRANTIES, EXPRESS OR IMPLIED, AND SPECIFICALLY DISCLAIMS ANY WARRANTY OF MERCHANTABILITY OR FITNESS FOR A PARTICULAR PURPOSE. CUSTOMER'S RIGHT TO RECOVER DAMAGES CAUSED BY FAULT OR NEGLIGENCE ON THE PART OF ALAZARTECH, INC. SHALL BE LIMITED TO THE AMOUNT THEREFORE PAID BY THE CUSTOMER. ALAZARTECH, INC. WILL NOT BE LIABLE FOR DAMAGES RESULTING FROM LOSS OF DATA, PROFITS, USE OF PRODUCTS, OR INCIDENTAL OR CONSEQUENTIAL DAMAGES, EVEN IF ADVISED OF THE POSSIBILITY THEREOF. This limitation of the liability of AlazarTech, Inc. will apply regardless of the form of action, whether in contract or tort, including negligence. Any action against AlazarTech, Inc. must be brought within one year after the cause of action accrues. AlazarTech, Inc. shall not be liable for any delay in performance due to causes beyond its reasonable control. The warranty provided herein does not cover damages, defects, malfunctions, or service failures caused by owner's failure to follow the AlazarTech, Inc. installation, operation, or maintenance instructions; owner's modification of the product; owner's abuse, misuse, or negligent acts; and power failure or surges, fire, flood, accident, actions of third parties, or other events outside reasonable control.

Copyright

Under the copyright laws, this publication may not be reproduced or transmitted in any form, electronic or mechanical, including photocopying, recording, storing in an information retrieval system, or translating, in whole or in part, without the prior written consent of AlazarTech, Inc.

Trademarks

AlazarTech, Inc.™, AlazarTech™, alazartech.com™, ATS™, ATS330™, AlazarDSO™, are trademarks of AlazarTech, Inc. Product and company names mentioned herein are trademarks or trade names of their respective companies.

Warning Regarding Use of AlazarTech Products

1. ALAZARTECH, INC. PRODUCTS ARE NOT DESIGNED WITH COMPONENTS AND TESTING FOR A LEVEL OF RELIABILITY SUITABLE FOR USE IN OR IN CONNECTION WITH SURGICAL IMPLANTS OR AS CRITICAL COMPONENTS IN ANY LIFE SUPPORT SYSTEMS WHOSE FAILURE TO PERFORM CAN REASONABLY BE EXPECTED TO CAUSE SIGNIFICANT INJURY TO A HUMAN.
2. IN ANY APPLICATION, INCLUDING THE ABOVE, RELIABILITY OF OPERATION OF THE SOFTWARE PRODUCTS CAN BE IMPAIRED BY ADVERSE FACTORS, INCLUDING BUT NOT LIMITED TO FLUCTUATIONS IN ELECTRICAL POWER SUPPLY, COMPUTER HARDWARE MALFUNCTIONS, COMPUTER OPERATING SYSTEM SOFTWARE FITNESS, FITNESS OF COMPILERS AND DEVELOPMENT SOFTWARE USED TO DEVELOP AN APPLICATION, INSTALLATION ERRORS, SOFTWARE AND HARDWARE COMPATIBILITY PROBLEMS, MALFUNCTIONS OR FAILURES OF ELECTRONIC MONITORING OR CONTROL DEVICES, TRANSIENT FAILURES OF ELECTRONIC SYSTEMS (HARDWARE AND/OR SOFTWARE), UNANTICIPATED USES OR MISUSES, OR ERRORS ON THE PART OF THE USER OR APPLICATIONS DESIGNER (ADVERSE FACTORS SUCH AS THESE ARE HEREAFTER COLLECTIVELY TERMED "SYSTEM FAILURES"). ANY APPLICATION WHERE A SYSTEM FAILURE WOULD CREATE A RISK OF HARM TO PROPERTY OR PERSONS (INCLUDING THE RISK OF BODILY INJURY AND DEATH) SHOULD NOT BE RELIANT SOLELY UPON ONE FORM OF ELECTRONIC SYSTEM DUE TO THE RISK OF SYSTEM FAILURE. TO AVOID DAMAGE, INJURY, OR DEATH, THE USER OR APPLICATION DESIGNER MUST TAKE REASONABLY PRUDENT STEPS TO PROTECT AGAINST SYSTEM FAILURES, INCLUDING BUT NOT LIMITED TO BACK-UP OR SHUT DOWN MECHANISMS. BECAUSE EACH END-USER SYSTEM IS CUSTOMIZED AND DIFFERS FROM ALAZARTECH, INC.'S TESTING PLATFORMS AND BECAUSE A USER OR APPLICATION DESIGNER MAY USE ALAZARTECH, INC. PRODUCTS IN COMBINATION WITH OTHER PRODUCTS IN A MANNER NOT EVALUATED OR CONTEMPLATED BY ALAZARTECH, INC., THE USER OR APPLICATION DESIGNER IS ULTIMATELY RESPONSIBLE FOR VERIFYING AND VALIDATING THE SUITABILITY OF ALAZARTECH INC. PRODUCTS WHENEVER ALAZARTECH, INC. PRODUCTS ARE INCORPORATED IN A SYSTEM OR APPLICATION, INCLUDING, WITHOUT LIMITATION, THE APPROPRIATE DESIGN, PROCESS AND SAFETY LEVEL OF SUCH SYSTEM OR APPLICATION.

Compliance

FCC/Canada Radio Frequency Interference Compliance*

Determining FCC Class

The Federal Communications Commission (FCC) has rules to protect wireless communications from interference. The FCC places digital electronics into two classes. These classes are known as Class A (for use in industrial-commercial locations only) or Class B (for use in residential or commercial locations). Depending on where it is operated, this product could be subject to restrictions in the FCC rules. (In Canada, the Department of communications (DOC), of Industry Canada, regulates wireless interference in much the same way.)

Digital electronics emit weak signals during normal operation that can affect radio, television, or other wireless products. By examining the product you purchased, you can determine the FCC Class and therefore which of the two FCC/DOC Warnings apply in the following sections. (Some products may not be labeled at all for FCC; if so, the reader should then assume these are Class A devices.)

FCC Class A products only display a simple warning statement of one paragraph in length regarding interference and undesired operation. Most of our products are FCC Class A. The FCC rules have restrictions regarding the locations where FCC Class A products can be operated.

FCC Class B products display either a FCC ID code, starting with the letters **EXN**, or the FCC Class B compliance mark.

Consult the FCC web site <http://www.fcc.gov> for more information.

FCC/DOC Warnings

This equipment generates and uses radio frequency energy and, if not installed and used in strict accordance with the instructions in this manual and the CE Mark Declaration of Conformity**, may cause interference to radio and television reception. Classification requirements are the same for the Federal Communications Commission (FCC) and the Canadian Department of Communications (DOC).

Changes or modifications not expressly approved by AlazarTech Inc. could void the user's authority to operate the equipment under the FCC Rules.

Class A

Federal Communications Commission

This equipment has been tested and found to comply with the limits for a Class A digital device, pursuant to part 15 of the FCC Rules. These limits are designed to provide reasonable protection against harmful interference when the equipment is operated in a commercial environment. This equipment generates, uses, and can radiate radio frequency energy and, if not installed and used in accordance with the instruction manual, may cause harmful interference to radio communications. Operation of this equipment in a residential area is likely to cause harmful interference in which case the user will be required to correct the interference at his own expense.

Canadian Department of Communications

This Class A digital apparatus meets all requirements of the Canadian Interference-Causing Equipment Regulations. *Cet appareil numérique de la classe A respecte toutes les exigences du Règlement sur le matériel brouilleur du Canada.*

Compliance to EU Directives

Readers in the European Union (EU) must refer to the Manufacturer's Declaration of Conformity (DoC) for information** pertaining to the CE Mark compliance scheme. The Manufacturer includes a DoC for most every hardware product except for those bought for OEMs, if also available from an original manufacturer that also markets in the EU, or where compliance is not required as for electrically benign apparatus or cables.

To obtain the DoC for this product, click **Declaration of Conformity** at <http://www.alazartech.com/support/documents.htm>. This web page lists all DoCs by product family. Select the appropriate product to download or read the DoC.

* Certain exemptions may apply in the USA, see FCC Rules §15.103 **Exempted devices**, and §15.105(c). Also available in sections of CFR 47.

** The CE Mark Declaration of Conformity will contain important supplementary information and instructions for the user or installer.

Environmental Compliance

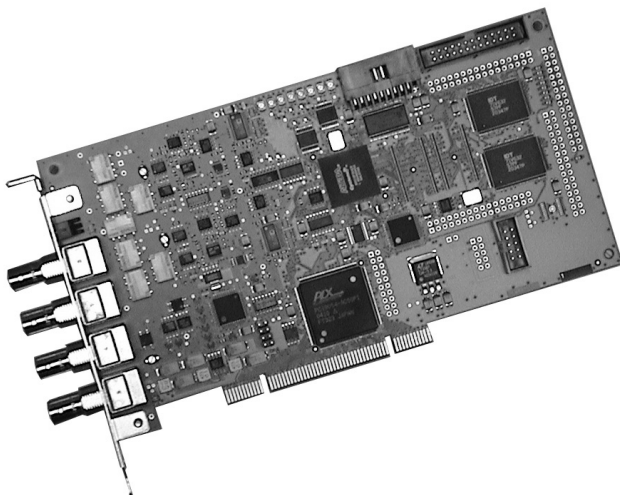
Alazar Technologies Inc., hereby certifies that this product is RoHS compliant, as defined by *Directive 2002/95/EC of the European Parliament and of the Council of 27 January 2003 on the restriction of the use of certain hazardous substances in electrical and electronic equipment*. All manufacturing has been done using RoHS-compliant components and lead-free soldering.

Table of Contents

CHAPTER 1 - INTRODUCTION	1
About Your ATS330	2
Acquiring Data with Your ATS330.....	3
Interactively Controlling your ATS330 with AlazarDSO	4
ATS-SDK API	5
ATS-VI LabVIEW VI.....	5
ATS-Linux	6
Optional Upgrades	7
CHAPTER 2 - INSTALLATION AND CONFIGURATION.....	8
What You Need to Get Started	9
Unpacking	11
Installing the ATS330	12
Installing the ATS330 in a Linux System.....	25
Compiling the ATS330 Linux Driver	26
Configuring Internet Security and Virus Protection Software to Allow Proper Operation of ATS Class Digitizers	27
Updating ATS330 Driver	29
CHAPTER 3 - HARDWARE OVERVIEW.....	31
Input Connectors	32
Signal Connections	33
Analog Input	34
Pipelined ADC	35
Pre-Trigger Multiple Record Acquisition	35
Specifying Record Length	35
Specifying Pretrigger Depth.....	36
Specifying Record Count	36
Calibration	37
Master/Slave Operation.....	38
Restrictions	39
Optional Trigger Out Upgrade.....	41
APPENDIX A - SPECIFICATIONS	43

Chapter 1 - Introduction

This chapter describes the ATS330 and lists additional equipment.



About Your ATS330

Thank you for your purchase of an ATS330. The ATS330 PCI based waveform digitizer has the following features:

- Two 12-bit resolution analog input channels
- Half length PCI bus card
- Real-time sampling rate of 50 MS/s to 10 KS/s
- 25 MHz analog input bandwidth
- Analog trigger channel with software-selectable level, slope, and hysteresis
- Software-selectable AC/DC coupling and $1M\Omega/50\Omega$ input impedance
- 128,000 sample onboard memory, standard
- Pre-trigger and Post-Trigger Capture with Multiple Record capability
- NIST traceable calibration

All ATS330 digitizers follow industry-standard Plug and Play specifications on all platforms and offer seamless integration with compliant systems. If your application requires more than two channels for data acquisition, you can synchronize multiple digitizers on all platforms using a Master/Slave SyncBoard.

Detailed specifications of the ATS330 digitizers are listed in Appendix A, Specifications.

Acquiring Data with Your ATS330

You can acquire data either programmatically by writing an application for your ATS330 or interactively with the AlazarDSO software.

If you want to integrate the ATS330 in your test and measurement or embedded OEM application, you can program the digitizer using C/C++, Visual BASIC or LabVIEW.

For programming in C/C++ or Visual BASIC, you must purchase the ATS-SDK software development kit that comes with sample programs and a reference manual describing the API.

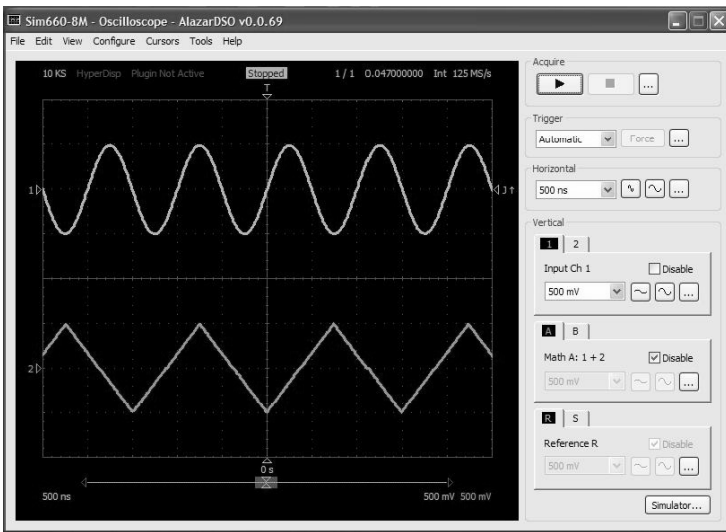
For programming in LabVIEW, you must purchase the ATS-VI virtual instrument library that comes with a high-level, easy-to-use VI that makes integrating the ATS330 into your own system very simple.

Interactively Controlling your ATS330 with AlazarDSO

The AlazarDSO Soft Front Panel allows you to interactively control your ATS330 as you would a desktop oscilloscope. To launch the Scope Soft Front Panel, select

Start » Programs » AlazarTech » AlazarDSO

The following screen will be displayed. If you connect the input to a signal generator and click on **Start** button, you should see the signal on the screen.

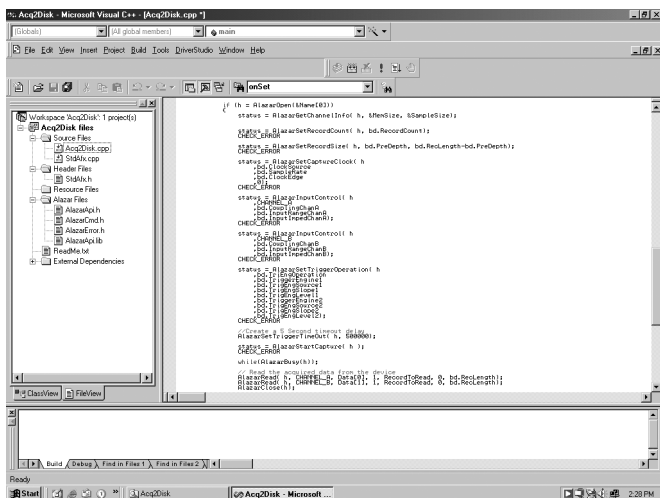


AlazarDSO has been designed to be very intuitive and uses the same user interface as most of today's digital oscilloscopes.

- Note that AlazarDSO does not support Windows 98. If you are using Windows 98SE, you can use the legacy API Panel software for acquiring signals interactively.

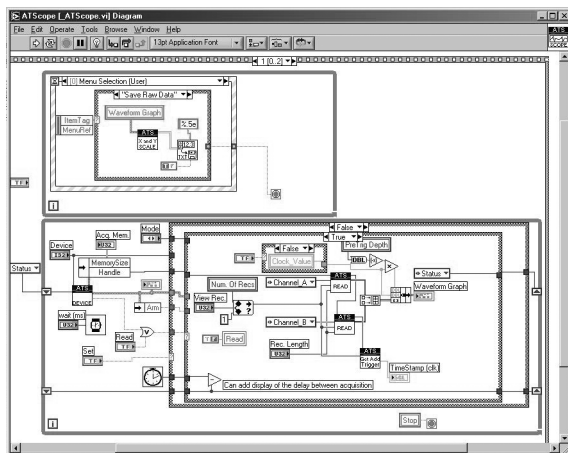
ATS-SDK API

The ATS-SDK API is used for programming the ATS330 in C/C++ or Visual BASIC. It provides the exact same API that is used for writing AlazarDSO software. To help you get started, ATS-SDK comes with examples you can use or modify.



ATS-VI LabVIEW VI

ATS-VI allows you to integrate the ATS330 into your own LabVIEW program. A high level VI is supplied that requires very few controls to get started.



ATS-Linux

ATS-Linux allows you to integrate the ATS330 into a Linux application written in C. Linux drivers are provided as a binary file, whereas all sample programs are supplied in C source code. Compatible with kernel versions up to and including 2.6.

Optional Upgrades

AlazarTech offers the following upgrades and accessories for use with your ATS330 digitizer:

- ATS330: External Clock Upgrade
- ATS330: Trigger Output Upgrade
- ATS330: Master/Slave SyncBoard 2 position
- ATS330: Master/Slave SyncBoard 4 position
- ATS330: Master/Slave SyncBoard 8 position

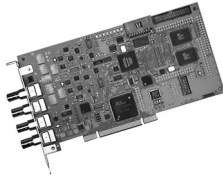
Chapter 2 - Installation and Configuration

This chapter describes how to unpack, install, and configure your ATS330.

What You Need to Get Started

To set up and use your ATS330, you will need the following:

- One or more ATS330 digitizers

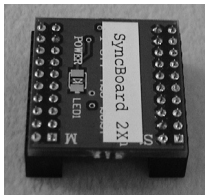


- ATS330 Install Disk

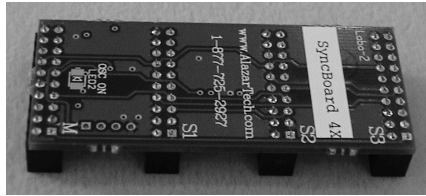


- For Master/Slave operation only:
SyncBoard of appropriate width

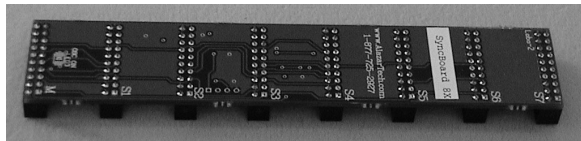
SyncBoard 2X for up to 2 digitizers



SyncBoard 4X for up to 4 digitizers



SyncBoard 8X for up to 8 digitizers



Unpacking

Your digitizer is shipped in an antistatic package to prevent electrostatic damage to the digitizer. Electrostatic discharge can damage several components on the digitizer. To avoid such damage in handling the digitizer, take the following precautions:

- Ground yourself via a grounding strap or by holding a grounded object.
- Touch the antistatic package to a metal part of your computer chassis before removing the digitizer from the package.
- Remove the digitizer from the package and inspect the digitizer for loose components or any other sign of damage. Notify AlazarTech if the digitizer appears damaged in any way. Do *not* install a damaged digitizer into your computer.
- *Never* touch the exposed pins of the connectors.

Installing the ATS330

There are four main steps involved in installation:

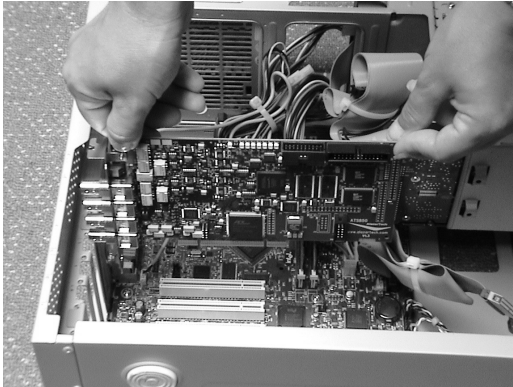
1. Physically install the digitizer(s) and SyncBoard, if any, in your computer
2. Install ATS330 software driver, when prompted
3. Install AlazarDSO software that allows you to setup the hardware, acquire signals and view and archive them
4. Optionally, install the ATS-SDK software development kit or ATS-VI LabVIEW VI, which enables you to programmatically control the ATS330

The following paragraphs will guide you through this process in a step-by-step manner.

1. **Physically install the digitizer in your computer**

Make sure that your computer is powered off before you attempt to insert the ATS330 digitizer in one of the free PCI slots.

For best noise performance, leave as much room as possible between your ATS330 and other hardware.

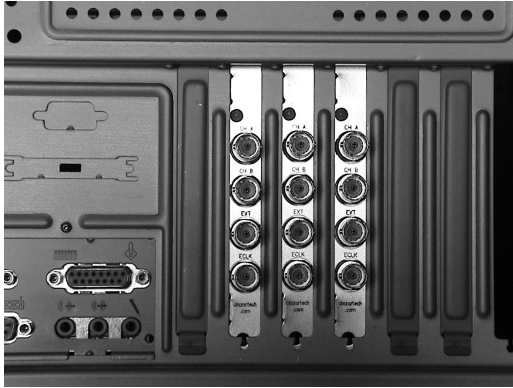


Always screw the digitizer bracket to the chassis in order to create a stable and robust connection to chassis ground.

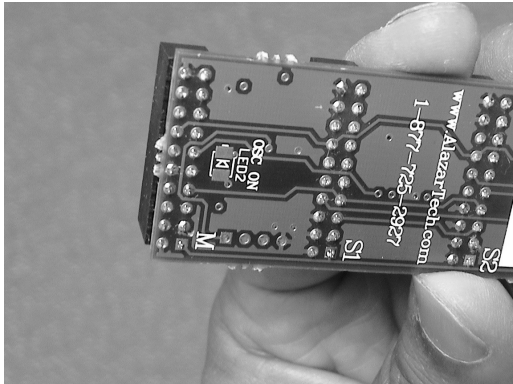
In the absence of such a connection, ATS330 is not guaranteed to operate within the specifications listed elsewhere in this manual.

For Master/Slave Installation

If you are installing multiple ATS330 digitizers that will be configured as a Master/Slave system, make sure that you insert all cards in adjacent slots.



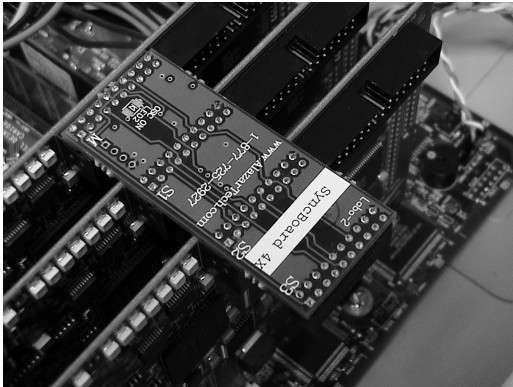
The connector on the SyncBoard that is labeled as “M” (Master), must be inserted into the Master/Slave connector of the left-most digitizer, if you are facing the BNC connectors of the ATS330 digitizers.



If you are installing fewer than the maximum number of digitizers supported by your SyncBoard, the unused SyncBoard connectors must be on the right-hand side of the digitizers, if you are facing the BNC connectors of the ATS330 digitizers.



Zoomed in, this should look as shown below:



Once you have completed this step, you should power the computer on.

2. **Install ATS330 software driver, when prompted**

The following instructions guide you through the process of installing the ATS330 in a computer running Windows XP, Windows 2000 or Windows 98SE operating systems. Other operating systems, such as Windows NT, are not covered here.

Installation of Multiple ATS330 Digitizers

If you are installing multiple ATS330 digitizers, the operating system will detect one card at a time and you will have to go through the driver installation setup as many times as you have cards.

If you are installing multiple ATS330 digitizers under Windows 98SE, you will be prompted to reboot the computer after each installation. You should only reboot the computer after having installed the last ATS330 digitizer.

Installing ATS330 Driver In Windows 98SE

When you first plug in an ATS330 digitizer into a computer, the plug-n-play Windows 98SE operating system will detect the presence of a new PCI card and ask you to provide the device driver.

- a) Operating System will display the **Welcome to the Found New Hardware Wizard**

Click **Next**.

- b) Operating system will display the **Install Hardware Device Driver** dialog box

Select the radio button next to the text *Display a list of the known drivers for this device so that I can choose a specific driver*. Click **Next**.

- c) Operating system will display the **Hardware Type** dialog box

Select **System devices**

- d) Operating system will display the **Select a Device Driver** dialog box

Click on **Have Disk**

- e) Operating system will display the **Install from Disk** dialog box

Make sure the path points to **D:\Win2K_98SE**, or wherever the ATS330.INF file resides. If you are using a floppy disk or a CD, make sure the disk is inserted in the drive.

Select the ATS330.INF file and click **Open**

The operating system may display **Install from Disk** dialog box again. If it does, Click **OK**, otherwise continue to the next step

- f) Operating system will display the **Select a Device Driver** dialog box again.

Make sure the **AlazarTech ATS330 PCI Digitizer** is selected. Then click **Next**.

- g) Operating system will display the **Update Driver Warning**. This warning is meant to tell you that Windows does not recognize the hardware.

Click **Yes**.

- h) Operating system will display the **Start Device Driver Installation** dialog box.

Click **Next**. System will copy all necessary files to the appropriate folders.

- i) Operating system will display the **Completing the Found New Hardware Wizard** message.

Click **Finish**.

Installing ATS330 Driver in Windows 2000

Before proceeding, make sure that you have sufficient administrative rights to install device drivers on your computer. Typically, you should be the Administrator for the computer you are installing device drivers on.

When you first plug in an ATS330 digitizer into a computer, the plug-n-play Windows 2000 operating system will detect the presence of a new PCI card and ask you to provide the device driver.

- a) Operating System will display the **Welcome to the Found New Hardware Wizard**

Click **Next**.

- b) Operating system will display the **Install Hardware Device Driver** dialog box

Select the radio button next to the text *Display a list of the known drivers for this device so that I can choose a specific driver*. Click **Next**.

- c) Operating system will display the **Hardware Type** dialog box

Select **System devices**

- d) Operating system will display the **Select a Device Driver** dialog box

Click on **Have Disk**

- e) Operating system will display the **Install from Disk** dialog box

Make sure the path points to **D:\Win2K_98SE**, or wherever the ATS330.INF file resides. If you are using a floppy disk or a CD, make sure the disk is inserted in the appropriate drive.

- f) Select the **ATS330.INF** file and click **Open**

The operating system may display **Install from Disk** dialog box again. If it does, Click **OK**, otherwise continue to the next step

- g) Operating system will display the **Select a Device Driver** dialog box again.

Make sure the **AlazarTech ATS330 PCI Digitizer** is selected. Then click **Next**.

- h) Operating system will display the **Update Driver Warning**. This warning is meant to tell you that Windows does not recognize the hardware.

Click **Yes**.

- i) Operating system will display the **Start Device Driver Installation** dialog box.

Click **Next**. System will copy all necessary files to the appropriate folders.

- j) Operating system will display the **Completing the Found New Hardware Wizard** message.

Click **Finish**.

Installing ATS330 Driver In Windows XP

ATS330 Install Disk is fully compatible with both 32-bit and 64-bit versions of Windows XP and Windows Vista.

Before proceeding, make sure that you have sufficient administrative rights to install device drivers on your computer. Typically, you should be the Administrator for the computer you are installing device drivers on.

When you first plug in an ATS330 digitizer into a computer, the plug-n-play Windows XP operating system will detect the presence of a new PCI card and ask you to provide the device driver.

- a) Operating System will display the **Welcome to the Found New Hardware Wizard**

Click on the radio button next to the text *Install from a list or specific location (Advanced)*.

Click **Next**.

- b) Operating System will display the **Please choose your search and installation options** dialog box.

Click on the radio button next to the text *Don't search. I will choose the driver to install*.

Click **Next**.

- c) Operating system will display the **Hardware Type** dialog box

Select **System devices**

- d) Operating system will display the **Select the device driver you want to install for this hardware** dialog box

Click on **Have Disk**

- e) Operating system will display the **Install from Disk** dialog box

Make sure the path points to **D:**, or wherever the **ATS330.INF** file resides. If you are using a floppy disk or a CD, make sure the disk is inserted in the drive.

Click **OK**.

- f) Operating system will display the **Select the device driver you want to install for this hardware** dialog box again.

Make sure the **AlazarTech ATS330 PCI Digitizer** is selected (highlighted).

Click **Next**.

- g) Operating system will display the **Update Driver Warning**. This warning is meant to tell you that Windows does not recognize the hardware.

Click **Yes**.

- h) System will copy all necessary files to the appropriate folders.

- i) Operating system will display the **Completing the Found New Hardware Wizard** message.

Click **Finish**.

3. Install AlazarDSO software that allows you to setup the hardware, acquire signals and view and archive them

If you are installing from the CD shipped with the ATS330 digitizer:

- Insert the ATS330 Install disk
- Use Windows Explorer to navigate to the appropriate AlazarDSO folder on the ATS330 Install Disk. Run Setup.exe program.
- Note that AlazarDSO is available in two versions: 32-bit and 64-bit. Please install the version appropriate for your operating system.
- Follow the instructions on the screen.

If you are installing AlazarDSO after having downloaded the installation file from AlazarTech web site:

- Download AlazarDSO installation file from www.alazartech.com/support/downloads.htm
- Unzip the file downloaded in the previous step.
- Browse to the folder that contains the unzipped file, Setup.exe
- Run this executable file and follow the instructions on the screen.

4. **Optionally, install the ATS-SDK software development kit or ATS-VI LabVIEW VI, which enables you to programmatically control the ATS330**

Insert the ATS-SDK or ATS-VI CD. Software installation will start automatically.

If, for any reason, installation does not start automatically, run the SETUP.EXE program.

Follow the instructions on the screen.

Note that you must have already installed the ATS330 drivers for any of the sample programs included with the ATS-SDK or ATS-VI to work properly.

Installing the ATS330 in a Linux System

ATS330 is fully compatible with the popular Linux operating system.

AlazarTech supplies binary Linux drivers that have been compiled for Fedora Core 5 (kernel 2.6).

Customers who require drivers for another version of Linux must contact the factory to obtain source code for the drivers (requires a Non-Disclosure Agreement). AlazarTech will not provide software support for compiling drivers for other versions of Linux, i.e. customers will be fully responsible for compiling drivers for their own Linux operating system.

To install Linux drivers in a Fedora Core 5 system, follow the instructions listed below:

1. Copy the supplied RPM file to the target machine
2. Double-click on the RPM icon. This will install the driver as well as associated applications.
3. Reboot the PC.
Note that if you do not reboot the PC, the driver will not be loaded.

The RPM file will also install an application called AlazarDSO. This is a Graphical User Interface (GUI) using which you can setup and acquire data from the ATS330.

Note that AlazarDSO has been compiled using GTK 2.4 libraries. If you intend to use an operating system other than Fedora Core 5, make sure that the GTK 2.4 libraries have been installed on your machine.

Compiling the ATS330 Linux Driver

If you need to compile the ATS330 driver for a version of Linux other than Fedora Core 5, follow the following steps:

1. Install the Linux kernel header files.
2. Extract the driver sources using the command "tar xvzf PlxLinux-2006.01.10.tgz". This will create a folder names "PlxLinux" with the driver files inside.
3. Set the shell environment variable PLX_SDK_DIR to the root location where the "PlxLinux" directory was created. For example, if using bash and the PlxLinux directory is in your home directory, then add the following line to the ~/.bashrc :

```
declare -x PLX_SDK_DIR=$HOME/PlxLinux
```

4. To build the ATS330 driver, type

```
cd PlxLinux/linux/driver  
./builddriver 330
```

This will create the file Pci9054/ATS330.ko, the loadable driver file. You can change build defines in PlxLinux/linux/makefiles/Gcc.def. Copy the driver to /usr/local/AlazarTech/bin.

5. Load the driver by rebooting the computer or typing:

```
cd /usr/local/AlazarTech/bin  
ATS330.rc start
```

The customer should be able to run the AlazarDSO application or Acq2Disk sample in /usr/local/AlazarTech/samples/ATS330.

6. If it is necessary to rebuild the library, type

```
cd PlxLinux/linux/api  
make
```

This will create SharedLibrary/libPlxApi.so.0.0. Copy the file to /usr/local/AlazarTech/lib and then run ldconf

Configuring Internet Security and Virus Protection Software to Allow Proper Operation of ATS Class Digitizers

Some of the recent releases of internet security and virus protection software packages, such as Norton Anti-Virus, disable any unused parallel or serial ports as well as any PCI devices that have not been assigned to a software application by the user. Users of AlazarTech PCI digitizers must configure their security software to allow access to the PCI digitizers.

The problem exhibits itself as a blue-screen crash and a “STOP Error”.

Typically, this error message is:

```
STOP: 0x0000000A  
(0x00000016, 0x0000001C, 0x00000000, 0x804E5DEB)
```

For more details on this problem with anti-virus software packages, refer to the technical note on Microsoft’s support site :

<http://support.microsoft.com/kb/892000/EN-US>

Also refer to the knowledgebase article on Symantec’s web site:

<http://service1.symantec.com/SUPPORT/sharedtech.nsf/0/2671ef6e5d72d3cd88256d26006699d5?OpenDocument>

This article explains that the root of the problem is one of the files updated by the Symantec anti-virus software.

Symantec suggests that users should upgrade their internet security software using Live Update, but our customers’ experience has been that this does not always work.

The solution that always works is:

- Remove Norton Anti-Virus software
- Reboot the PC after removing Norton Anti-Virus.
- Make sure AlazarTech hardware and software are fully functional
- Re-install Norton Anti-Virus software

AlazarTech PCI digitizer products are fully compatible with all internet security and anti-virus software. Users must make sure that their security software has been updated and configured properly.

Updating ATS330 Driver

From time to time, AlazarTech updates the device drivers for its products. These updates may be required for product enhancements or for bug fixes.

This section of the manual takes you through the steps required to update the device driver for the ATS330 PCI digitizer.

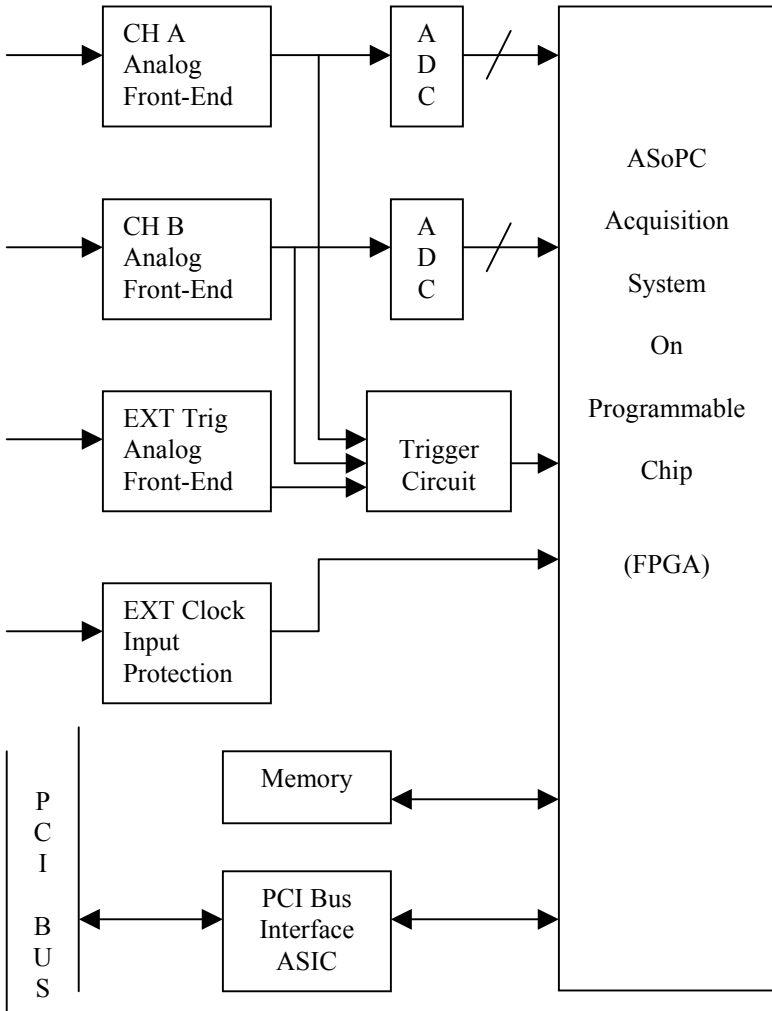
In other words, this section shows you how to install a newer version of the driver, when you already have a previous version of the driver installed on your machine.

1. Run Device Manager. To do so:
 - a. Run **Control Panel** by opening **Start » Settings » Control Panel**
 - b. Open **System Properties** dialog box by selecting or double-clicking on the **System** menu
 - c. Click on **Hardware** tab in the dialog box
 - d. Click on **Device Manager** button
2. **Device Manager** lists all hardware devices in your computer.
 - a. For Windows 2000 and Windows 98SE, AlazarTech PCI digitizers are listed within **System Devices**.
 - b. For Windows XP and Windows Vista, AlazarTech PCI digitizers are listed in their own class called **AlazarTech PCI Digitizers**
3. Expand the appropriate device list.
 - a. For Windows 2000 and Windows 98SE, expand the **System Devices** list.
 - b. For Windows XP and Windows Vista, expand the **AlazarTech PCI Digitizers** list.

4. Double-click on the ATS330 device:
 - a. For Windows 2000 and Windows 98SE, double-click on **AlazarTech ATS330 PCI Digitizer** device.
 - b. For Windows XP and Windows Vista, double-click on the **ATS330: 12-bit, 50 MS/s, 2 ch PCI Digitizer**
 - c. If more than one such devices are present, choose the first one in the list
5. This will open up the **ATS330 Properties** page
6. Click on the **Driver** tab
7. Click on **Update Driver** button near the bottom-right corner of the page
8. This will cause the **Upgrade Device Driver Wizard** to be started
9. To complete the installation, follow the instructions provided in the section labeled:
 - a. *Installing ATS330 Driver in Windows 98SE*
Or
 - b. *Installing ATS330 Driver in Windows 2000*
Or
 - c. *Installing ATS330 Driver in Windows XP and Vista*

Chapter 3 - Hardware Overview

This chapter includes an overview of the ATS330, explains the operation of each functional unit making up your ATS330, and describes the signal connections. Following is a high-level block diagram of ATS330.

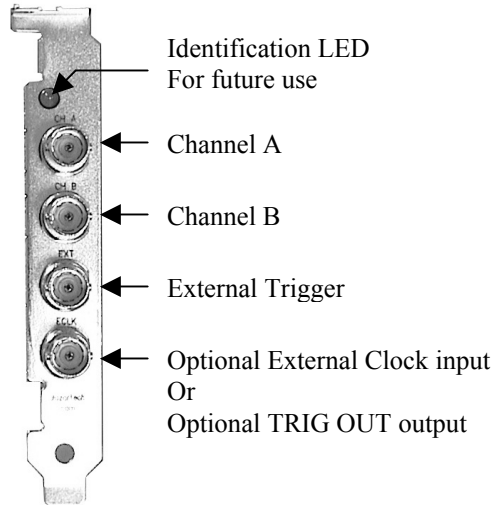


Input Connectors

These ATS330 digitizers have two standard BNC female connectors for CH A and CH B analog input connections, one standard BNC female connector for the EXT (External Trigger) input and one standard BNC female connector for the optional ECLK (External Clock) input or optional TRIG OUT output.

For applications that require both External Clock Input and TRIG OUT output, contact the factory for special cabling.

The following pictorial shows the various connectors available on the digitizer bracket.



Signal Connections

You can use CH A and CH B to digitize data as well as to trigger an acquisition.

Use the EXT input for an external analog trigger only; data on the TRIG channel cannot be digitized.

If External Clock Upgrade is installed on your ATS330, use the ECLK input for clocking the ATS330 in applications that require an external clock. Note that the frequency of the signal injected into the ECLK connector must remain between 50 MS/s and 1 MS/s.

If Trigger Output Upgrade is installed on your digitizer, ECLK connector can be used for outputting TRIG OUT signal, a 5 V TTL signal synchronous with the on-board trigger signal and the sampling clock.

Analog Input

The two analog input channels are referenced to common ground in bipolar mode. These settings are fixed; therefore, neither the reference nor the polarity of input channels can be changed. You cannot use CH A or CH B to make differential measurements or measure floating signals unless you subtract the digital waveforms in software.

For accurate measurements, make sure the signal being measured is referenced to the same ground as your ATS330 by attaching the probe's ground clip to the signal ground.

The EXTERNAL Trigger input has a programmable input range of ± 5 V or ± 1 V.

The CH A, CH B, and EXT inputs have a software-programmable coupling selection between AC and DC. Use AC coupling when your AC signal contains a large DC component. Without AC coupling, it is difficult to view details of the AC component with a large DC offset and a small AC component, such as switching noise on a DC supply. If you enable AC coupling, you remove the large DC offset for the input amplifier and amplify only the AC component. This technique makes effective use of dynamic range to digitize the signal of interest.

The *low-frequency corner* in an AC-coupled circuit is the frequency below which signals are attenuated by at least 3 dB. The low-frequency corner is approximately 10 Hz with 1 M Ω input impedance and 100 KHz with 50 Ω input impedance.

Pipelined ADC

The ADC on the ATS330 is a pipelined flash converter with a maximum conversion rate of 50 MS/s.

If you use an external clock, you must provide a free-running clock to ensure reliable operation. You also must follow all the timing specifications on the external clock as described in Appendix A, Specifications.

Using a pipelined architecture also introduces a lower limit on the sampling rate. For the ATS330, the accuracy starts to degrade below 1 MS/s.

Pre-Trigger Multiple Record Acquisition

The ATS330 allows the capture of multiple records into the on-board memory. This allows you to capture rapidly occurring triggers in lightning test, ultrasound or radar applications.

Unlike other digitizers on the market, users are allowed to acquire both pre- and post-trigger data when acquiring more than one record in an acquisition session. This feature can be very useful in lightning test, power line monitoring and other applications that feature rapidly occurring transient signals.

Specifying Record Length

Record Length is specified in number of sample points. It must be a minimum of 64 points and can be specified with a 4-sample resolution up to a maximum of the per-channel on-board memory.

Record Length thus specified determines the maximum number of records you can capture in one acquisition session. The relationship is given by:

$$\text{Max. Records} = (\text{Per-Channel Memory}) / (\text{Record Length} + 4)$$

Note that, unlike other products in its class, ATS330 allows you to capture multiple records into the on-board memory without requiring software-assisted re-arming of the digitizer.

Specifying Pretrigger Depth

ATS330 acquires a certain number of samples, called the pretrigger depth, *before* it allows the trigger circuitry to operate, thereby guaranteeing that the required number of sample points will be captured before trigger occurs.

User is allowed to set pretrigger depth for an acquisition session. Same values are used for all records captured in that session.

Pretrigger depth can be a minimum of 0 points and can be specified with a 4 sample resolution up to a maximum of (Record Length –64).

Specifying Record Count

User can specify the number of records that must be captured in one acquisition session. The minimum value must be 1 and the maximum value is given by:

Max. Records = (Per-Channel Memory) / (Record Length + 4)

Calibration

Calibration is the process of minimizing measurement errors by making small circuit adjustments.

All ATS330 digitizers come factory calibrated to the levels indicated in Appendix A, Specifications. Note that AlazarTech calibration is fully NIST traceable.

However, your digitizer needs to be periodically recalibrated in order to maintain its specified accuracy. This calibration due date is listed on the CALIBRATION sticker affixed to your ATS330 digitizer.

Externally recalibrate the ATS330 when this calibration interval has expired.

This requires three very simple steps:

1. Verify whether or not ATS330 is still within its specifications. If it is, then your calibration can be extended by another one-year period
2. If not, perform calibration, i.e. make adjustments to the circuit until it is within specifications again
3. If any adjustments have been made, verify if the ATS330 is within specifications

Verification and Calibration procedures are available to all registered users of ATS330 upon request.

Master/Slave Operation

You can use two or more ATS330 digitizers in one system to increase the number of channels for your application by synchronizing digitizers using the appropriate SyncBoard.

Currently, up to 16 channel (8 board) systems are supported for ATS330. For higher channel counts, contact the factory for special system configuration.

Unlike other products on the market, ATS330 does not suffer from clock jitter between master and slave digitizers.

The unique design of the ATS330 clock circuit provides a buffered copy of the Master digitizer's clock to itself and all the slave digitizers, thereby maintaining a very low skew between Master and Slave digitizer clocks.

Note that an ATS330 Master/Slave system is capable of triggering from any one of its input channels. This is valuable in multi-channel detector applications that cannot predict the input channel that is going to receive the first pulse.

With fully synchronous A/D conversion, arming and triggering, an ATS330 based Master/Slave system is an ideal multi-channel transient analyzer.

Restrictions

To ensure proper master/slave operation of your ATS330 digitizers, you must observe the following restrictions:

- All Master/Slave digitizers must be installed in adjacent slots, i.e. there should be no gap between the digitizers that are to be configured as a Master/Slave system

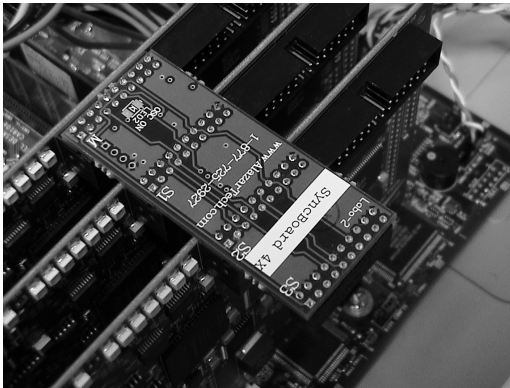


Good Installation



Bad Installation

- You must connect the appropriate SyncBoard to all of the ATS330 digitizers in your system. Note that all SyncBoards are polarized, so you cannot make a mistake in inserting them
- If you are using fewer than the maximum number of digitizers allowed by the SyncBoard, make sure that the connector labeled “M” (Master) on the SyncBoard is connected to one of the ATS330 digitizers. Any over-hang of the SyncBoard should be beyond the last slave board in your system



The presence of a SyncBoard is detected by the ATS330 driver when the ATSApi DLL is loaded. This DLL gets loaded when you run any application program written for ATS330. Examples of such application programs are AlazarDSO, one of the sample programs supplied with ATS-SDK or ATS-VI or any custom software written using ATS-SDK or ATS-VI.

If you run AlazarDSO or your own software that loads the ATSApi DLL, after having installed a SyncBoard, the ATS330 driver will automatically recognize that the digitizers are now configured as Master/Slave.

As such, there is no need to have your hardware upgraded or modified in any way to go from a set of independent boards to Master/Slave and vice-versa.

Optional Trigger Out Upgrade

Many ultrasound applications require the digitizer to generate a Trigger Output signal synchronous with its internal sampling clock.

Such synchronization is almost essential if multiple acquisitions have to be averaged.

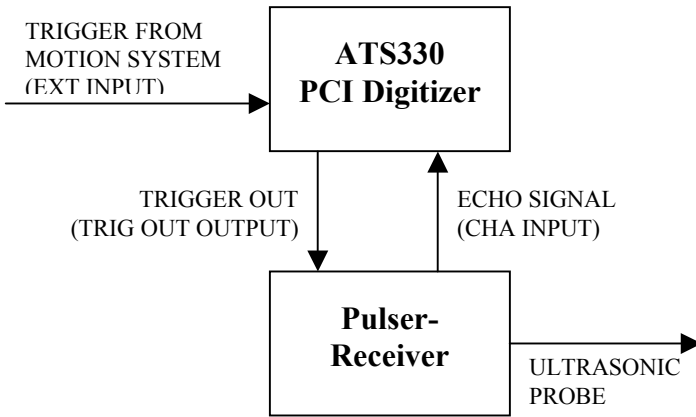
ATS330 uses a high quality crystal-controlled clock oscillator as its timebase.

It should be noted that crystal oscillators are one of the most reliable and repeatable types of clock source available.

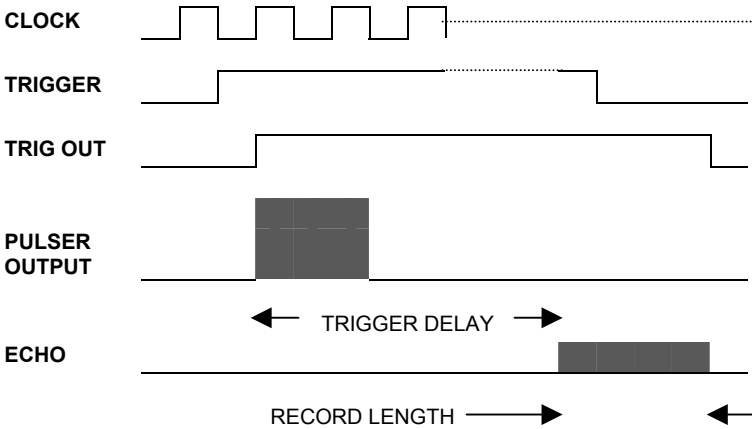
Crystal oscillators also provide far superior long-term jitter performance compared to PLL based clocking schemes.

The same qualities that make crystal oscillators such an ideal clock source also make it impossible to synchronize them to an external signal, such as an external trigger input or a 10 MHz reference clock.

As such, the best way to fully synchronize the acquisition system to a signal source, such as a pulser-receiver, is to trigger the pulser-receiver with a trigger signal that has already been synchronized to the ADC sampling clock. Hence the Optional Trigger Out Upgrade.



When connected as shown in the diagram above, the system works as follows:



Appendix A - Specifications

This appendix lists the specifications of the ATS330. These specifications are typical at 25 °C unless otherwise stated. The operating temperature range is 0 to 50 °C.

System Requirements

Computer with at least one free PCI slot, 128 MB RAM, 20 MB of free hard disk space,

Power Requirements

+5V	1.5 A, typical +5V voltage level must remain between the range of 4.75V to 5.20V at all times after power-on
-----	---

Physical

Size	Single slot, half-length PCI card (4.2 inches x 7.2 inches)
Weight	500 g

I/O Connectors

CH A, CH B, EXT, ECLK	BNC female connectors
-----------------------	-----------------------

Environmental

Operating temperature	0 to 55 °C
Storage temperature	-20 to 70 °C
Relative humidity	5 to 95%, non-condensing

Acquisition System

Resolution	12 bits
Bandwidth (-3dB)	
DC-coupled, 1M Ω	DC - 25 MHz
DC-coupled, 50 Ω	DC - 25 MHz
AC-coupled, 1M Ω	10 Hz - 25 MHz
AC-coupled, 50 Ω	100KHz - 25 MHz
Bandwidth flatness:	\pm 1dB, from DC to 10 MHz with DC coupling \pm 1dB, from 50Hz to 10 MHz with AC, 1 M Ω \pm 1dB, from 200 KHz to 10 MHz with AC, 50 Ω

Number of channels	2 simultaneously sampled
Maximum Sample Rate	50 MS/s single shot
Minimum Sample Rate	10 KS/s single shot (internal clock)
Full Scale Input ranges	±40mV, ±50mV, ±80mV, ±100mV, ±200mV, ±400mV, ±500mV, ±800mV, ±1V, ±2V, ±4V, ±5V, ±8V, ±10V and ±20V, software selectable.
DC accuracy	±2% of full scale in all input ranges
Input coupling	AC or DC, software selectable
Input impedance	50Ω or 1MΩ ±1% in parallel with 30 pF ±10pF, software selectable
Input protection	
1MΩ	±28V (DC + peak AC for CH A, CH B and EXT only without external attenuation)
50Ω	±8V (DC + peak AC for CH A, CH B and EXT only without external attenuation)

Acquisition Memory System

Acquisition Memory/channel	Up to 128,000 samples per channel standard, or Up to 8,000,000 samples per channel with High Memory Option
Record Length	Software selectable with 4-point resolution. Record length must be a minimum of 256 points. Maximum record length is limited by the acquisition memory per channel.
Number of Records	Software selectable from a minimum of 1 to a maximum of 1,000 or (Acquisition Memory Per Channel / (Record Length+4)), whichever is lower
Pre-trigger depth	0 to (Record Length-64), software selectable with 4 point resolution
Post-trigger depth	Record Length - Pre-trigger depth

Timebase System

Timebase options	Internal Clock or External Clock (Optional)
Internal Sample Rates	50 MS/s, 10 MS/s, 5 MS/s, 2 MS/s, 1 MS/s, 500 KS/s, 200 KS/s, 100KS/s, 50 KS/s, 20KS/s, 10KS/s
Internal Clock accuracy	±100 ppm

Dynamic Parameters

Typical values measured using a randomly selected ATS330 in $\pm 1V$ input range, DC coupling and 50Ω impedance. Input was provided by a HP8656A signal generator, followed by a 9-pole, 1 MHz band-pass filter. Input frequency was set at 1 MHz and amplitude was 650 mV rms (92% of full scale input).

SNR	62 dB
SINAD	58 dB
THD	-61 dB
SFDR	-62 dB

Note that these dynamic parameters may vary from one unit to another, with input frequency and with the full-scale input range selected.

Optional ECLK (External Clock) Input

Signal Level	TTL levels. Compatible with both 3.3V and 5V TTL
Input impedance	50Ω
Input current requirement	$\pm 66mA$
Maximum frequency	50 MHz with 50% $\pm 5\%$ duty cycle
Minimum frequency	1 MHz with 50% $\pm 5\%$ duty cycle
Decimation factor	Software selectable from 1 to 100,000
Sampling Edge	Rising or Falling, software selectable

Triggering System

Mode	Edge triggering with fixed hysteresis
Number of Trigger Engines	2
Trigger Engine Combination	OR, AND, XOR, software selectable
Trigger Engine Source	CH A, CH B, EXT, Software or None, independently software selectable for each of the two Trigger Engines
Hysteresis	$\pm 5\%$ of full-scale input, typical
Trigger sensitivity	$\pm 10\%$ of full scale input range. This implies that the trigger system may not trigger reliably if the input has an amplitude less than $\pm 10\%$ of full-scale input range selected
Trigger level accuracy	$\pm 10\%$, typical, of full-scale input range of the selected trigger source
Bandwidth	25 MHz
Trigger Delay	Software selectable from 0 to 9,999,999 sampling clock cycles

Trigger Timeout Software selectable with a 10 us resolution.
Maximum settable value is 3,600 seconds.
Can also be disabled to wait indefinitely for a
trigger event

EXT (External Trigger) Input

Input impedance	1 M Ω in parallel with 30pF \pm 10pF
Bandwidth (-3dB)	
DC-coupled	DC - 25 MHz
AC-coupled	10 Hz - 25 MHz
Input range	\pm 5V or \pm 1V, software selectable
DC accuracy	\pm 10% of full-scale input
Input protection	\pm 28V (DC + peak AC without external attenuation)
Coupling	AC or DC, software selectable

Certification and Compliances

CE Mark Compliance

Materials Supplied

One ATS330 Digitizer
One ATS330 Install Disk (CD)
One ATS330 User Manual

All specifications are subject to change without notice



ALAZAR TECHNOLOGIES INC.

3551 St-Charles, Unit 640

Kirkland, QC

CANADA H9H 3C4

Tel: (514) 633-0001

Fax: (514) 633-0021

E-mail: info@alazartech.com

Web: www.alazartech.com