



ATS9872 User Manual

**8-Bit, 2 Channel, 1 GS/s
Waveform Digitizer for PCI Express Gen 1 Bus**



User Manual Version 1.0
Written for Hardware Version 1.3
June 2024 Edition



Copyright © 2024 Alazar Technologies. All rights reserved.

Alazar Technologies, Inc. Contact Information

Alazar Technologies Inc.
6600 Trans-Canada Highway, Suite 310
Suite 310
Pointe-Claire, QC
Canada H9R 4S2

Telephone: (514) 426-4899

Fax: (514) 426-2723

E-mail: sales@alazartech.com

Website: www.alazartech.com

To comment on the documentation for ATS9872, send an e-mail to support@alazartech.com

Information required when contacting AlazarTech for technical support:

Owned by: _____

Serial Number: _____

Purchase Date: _____

Purchased From: _____

Software Driver Version: _____

ATS-SDK Version: _____

ATS-GPU Version: _____

AlazarDSO Version: _____

Operating System: _____



Important Information

Warranty

The AlazarTech ATS®9872 is warranted against defects in materials and workmanship for a period of one year from the date of shipment, as evidenced by receipts or other documentation. Alazar Technologies Inc. (hereafter "AlazarTech") will, at its option, repair or replace equipment that proves to be defective during the warranty period. This warranty includes parts and labor.

The media on which you receive AlazarTech software are warranted not to fail to execute programming instructions, due to defects in materials and workmanship, for a period of 90 days from date of shipment, as evidenced by receipts or other documentation. AlazarTech will, at its option, repair or replace software media that do not execute programming instructions if AlazarTech receives notice of such defects during the warranty period. AlazarTech does not warrant that the operation of the software shall be uninterrupted or error free.

A Return Material Authorization (RMA) number must be obtained from the factory and clearly marked on the outside of the package before any equipment will be accepted for warranty work. AlazarTech will pay the shipping costs of returning to the owner parts that are covered by warranty.

AlazarTech believes that the information in this document is accurate. The document has been carefully reviewed for technical accuracy. In the event that technical or typographical errors exist, AlazarTech reserves the right to make changes to subsequent editions of this document without prior notice to holders of this edition. AlazarTech may also make improvements and/or changes in the products and/or programs described in this document at any time. The reader should consult AlazarTech if errors are suspected. In no event shall AlazarTech be liable for any damages arising out of or related to this document or the information contained in it. The latest user manual can be found on the AlazarTech web page at <https://www.alazartech.com/en/downloads/>.

EXCEPT AS SPECIFIED HEREIN, ALAZARTECH MAKES NO WARRANTIES, EXPRESS OR IMPLIED, AND SPECIFICALLY DISCLAIMS ANY WARRANTY OF MERCHANTABILITY OR FITNESS FOR A PARTICULAR PURPOSE. CUSTOMER'S RIGHT TO RECOVER DAMAGES CAUSED BY FAULT OR NEGLIGENCE ON THE PART OF ALAZARTECH SHALL BE LIMITED TO THE AMOUNT THERETOFORE PAID BY THE CUSTOMER. ALAZARTECH WILL NOT BE LIABLE FOR DAMAGES RESULTING FROM LOSS OF DATA, PROFITS, USE OF PRODUCTS, OR INCIDENTAL OR CONSEQUENTIAL DAMAGES, EVEN IF ADVISED OF THE POSSIBILITY THEREOF. This limitation of the liability of AlazarTech will apply regardless of the form of action, whether in contract or tort, including negligence. Any action against AlazarTech must be brought within one year after the cause of action accrues. AlazarTech shall not be liable for any delay in performance due to causes beyond its reasonable control. The

warranty provided herein does not cover damages, defects, malfunctions, or service failures caused by owner's failure to follow the AlazarTech installation, operation, or maintenance instructions; owner's modification of the product; owner's abuse, misuse, or negligent acts; and power failure or surges, fire, flood, accident, actions of third parties, or other events outside reasonable control.

Copyright

Under the copyright laws, this publication may not be reproduced or transmitted in any form, electronic or mechanical, including photocopying, recording, storing in an information retrieval system, or translating, in whole or in part, without the prior written consent of AlazarTech.

Registered Trademarks

AlazarTech®, AlazarTech ATS®, AlazarDSO®, AlazarStream®, and AlazarPC® are registered trademarks of Alazar Technologies, Inc. MATLAB is a trademark and/or registered trademark of The MathWorks, Inc. LabVIEW is a trademark and/or registered trademark of National Instruments. Windows and Windows Server are trademarks and/or registered trademarks of Microsoft Corporation in the U.S. and/or other countries. Linux is a registered trademark of Linus Torvalds. ASUS is either a US registered trademark or trademark of ASUSTeK Computer Inc. in the United States and/or other countries. RHEL is a registered trademark of Red Hat, Inc. in the United States, and other countries. CUDA NVIDIA, and Quadro are trademarks and/or registered trademarks of NVIDIA Corporation in the U.S. and/or other countries. Radeon is a trademark of Advanced Micro Devices, Inc. OpenCL is a trademark of Apple Inc. Other product and company names mentioned herein are trademarks, registered trademarks, or trade names of their respective owners.

Warning Regarding Use of AlazarTech Products

ALAZARTECH PRODUCTS ARE NOT DESIGNED WITH COMPONENTS AND TESTING FOR A LEVEL OF RELIABILITY SUITABLE FOR USE IN OR IN CONNECTION WITH SURGICAL IMPLANTS OR AS CRITICAL COMPONENTS IN ANY LIFE SUPPORT SYSTEMS WHOSE FAILURE TO PERFORM CAN REASONABLY BE EXPECTED TO CAUSE SIGNIFICANT INJURY TO A HUMAN.

IN ANY APPLICATION, INCLUDING THE ABOVE, RELIABILITY OF OPERATION OF THE SOFTWARE PRODUCTS CAN BE IMPAIRED BY ADVERSE FACTORS, INCLUDING BUT NOT LIMITED TO FLUCTUATIONS IN ELECTRICAL POWER SUPPLY, COMPUTER HARDWARE MALFUNCTIONS, COMPUTER OPERATING SYSTEM SOFTWARE FITNESS, FITNESS OF COMPILERS AND DEVELOPMENT SOFTWARE USED TO DEVELOP AN APPLICATION, INSTALLATION ERRORS, SOFTWARE AND HARDWARE COMPATIBILITY PROBLEMS, MALFUNCTIONS OR FAILURES OF ELECTRONIC MONITORING OR CONTROL DEVICES, TRANSIENT FAILURES OF ELECTRONIC SYSTEMS (HARDWARE AND/OR SOFTWARE),



UNANTICIPATED USES OR MISUSES, OR ERRORS ON THE PART OF THE USER OR APPLICATIONS DESIGNER (ADVERSE FACTORS SUCH AS THESE ARE HEREAFTER COLLECTIVELY TERMED "SYSTEM FAILURES"). ANY APPLICATION WHERE A SYSTEM FAILURE WOULD CREATE A RISK OF HARM TO PROPERTY OR PERSONS (INCLUDING THE RISK OF BODILY INJURY AND DEATH) SHOULD NOT BE RELIANT SOLELY UPON ONE FORM OF ELECTRONIC SYSTEM DUE TO THE RISK OF SYSTEM FAILURE. TO AVOID DAMAGE, INJURY, OR DEATH, THE USER OR APPLICATION DESIGNER MUST TAKE REASONABLY PRUDENT STEPS TO PROTECT AGAINST SYSTEM FAILURES, INCLUDING BUT NOT LIMITED TO BACK-UP OR SHUT DOWN MECHANISMS. BECAUSE EACH END-USER SYSTEM IS CUSTOMIZED AND DIFFERS FROM ALAZARTECH'S TESTING PLATFORMS AND BECAUSE A USER OR APPLICATION DESIGNER MAY USE ALAZARTECH PRODUCTS IN COMBINATION WITH OTHER PRODUCTS IN A MANNER NOT EVALUATED OR CONTEMPLATED BY ALAZARTECH, THE USER OR APPLICATION DESIGNER IS ULTIMATELY RESPONSIBLE FOR VERIFYING AND VALIDATING THE SUITABILITY OF ALAZARTECH PRODUCTS WHENEVER ALAZARTECH PRODUCTS ARE INCORPORATED IN A SYSTEM OR APPLICATION, INCLUDING, WITHOUT LIMITATION, THE APPROPRIATE DESIGN, PROCESS AND SAFETY LEVEL OF SUCH SYSTEM OR APPLICATION.

Compliance

FCC/Canadian Interference-Causing Equipment Standard (ICES-003) Compliance*

Determining FCC Class

The Federal Communications Commission (FCC) has rules to protect wireless communications from interference. The FCC places digital electronics into two classes. These classes are known as Class A (for use in industrial-commercial locations only) or Class B (for use in residential or commercial locations).

Depending on where it is operated, this product could be subject to restrictions in the FCC rules. (In Canada, the department of Innovation, Science and Economic Development (ISED) regulates wireless interference in much the same way).

Digital electronics emit weak signals during normal operation that can affect radio, television, or other wireless products. By examining the product you purchased, you can determine the FCC Class and therefore which of the two FCC/ISED Warnings apply in the following sections. (Some products may not be labeled at all for FCC; if so, the reader should then assume these are Class A devices.)

FCC Class A products only display a simple warning statement of one paragraph in length regarding interference and undesired operation. Most of our products are FCC Class A. The FCC rules have restrictions regarding the locations where FCC Class A products can be operated.

FCC Class B products display either an FCC ID code, starting with the letters **EXN**, or the FCC Class B compliance mark.

Consult the FCC web site www.fcc.gov for more information.

FCC/ISED Warnings

This equipment generates and uses radio frequency energy and, if not installed and used in strict accordance with the instructions in this manual and the CE Mark Declaration of Conformity**, may cause interference to radio and television reception. Classification requirements are the same for the Federal Communications Commission (FCC) and Innovation, Science and Economic Development (ISED) Canada.

Changes or modifications not expressly approved by AlazarTech could void the user's authority to operate the equipment under the FCC/ISED Rules.



Class A

Federal Communications Commission

This equipment has been tested and found to comply with the limits for a Class A digital device, pursuant to part 15 of the FCC Rules. These limits are designed to provide reasonable protection against harmful interference when the equipment is operated in a commercial environment. This equipment generates, uses, and can radiate radio frequency energy and, if not installed and used in accordance with the instruction manual, may cause harmful interference to radio communications. Operation of this equipment in a residential area is likely to cause harmful interference in which case the user will be required to correct the interference at his own expense.

Innovation, Science and Economic Development Canada

This Class A digital apparatus meets all requirements of the Canadian Interference-Causing Equipment Standard (ICES-003). Cet appareil numérique de la classe A respecte toutes les exigences du Règlement sur le matériel brouilleur du Canada.

Compliance to EU Directives

Readers in the European Union (EU) must refer to the Manufacturer's Declaration of Conformity (DoC) for information** pertaining to the CE Mark compliance scheme. The Manufacturer includes a DoC for most every hardware product except for those bought for OEMs, if also available from an original manufacturer that also markets in the EU, or where compliance is not required as for electrically benign apparatus or cables.

To obtain the DoC for this product, click **Compliance and Conformity** at <https://www.alazartech.com/en/downloads/>. This web page lists all DoCs by product family. Select the appropriate product to download or read the DoC.

* Certain exemptions may apply in the USA, see FCC Rules §15.103 **Exempted devices**, and §15.105(c). Also available in sections of CFR 47.

** The CE Mark Declaration of Conformity will contain important supplementary information and instructions for the user or installer.

Environmental Compliance

Alazar Technologies Inc., hereby certifies that this product is RoHS compliant, as defined by Directive 2015/863/EU (RoHS 3) of the European Parliament and of the Council of 22 July 2019 on the restriction of the use of certain hazardous substances in electrical and electronic equipment. All manufacturing has been done using RoHS-compliant components and lead-free soldering.

Alazar Technologies Inc. verifies its supply chain against the latest REACH requirements. A compliance statement is usually available within 6 months of release of the European Chemicals Agency (ECHA) updated substance of very high concern (SVHC), Authorizations, and Restrictions lists.



Table of Contents

Important Information	ii
Compliance.....	v
Table of Contents	viii
Change Log	ix
CHAPTER 1 INTRODUCTION.....	1
About Your ATS9872	2
ATS9872 Export Control Classification	3
Acquiring Data with Your ATS9872	4
Optional Upgrades & Accessories	8
CHAPTER 2 INSTALLATION AND CONFIGURATION	9
What You Need to Get Started.....	10
Unpacking	11
Installing the ATS9872 in Windows	12
Installing the ATS9872 in a Linux System	29
Updating ATS9872 Driver	35
Updating ATS9872 Firmware in Windows	38
Updating ATS9872 Firmware in a Linux System.....	44
CHAPTER 3 HARDWARE OVERVIEW	52
Physical Overview.....	54
Status LEDs.....	56
Signal Connections	59
Analog Input.....	60
External (10 MHz Reference) Clock.....	63
Calibration.....	64
Optional Accessories: ATS9872: Sync 4X1G	65
Optional Extended Warranty.....	68
CHAPTER 4 SPECIFIC FEATURES	69
Streaming Data Across the Bus.....	70
Output Data Format.....	77
Real-Time Signal Processing.....	78
Stream to Memory	79
Triggering.....	80
APPENDIX A - SPECIFICATIONS	81
APPENDIX B - BENCHMARKS.....	86



Change Log

This is the first edition of this manual

Chapter 1

Introduction

This chapter describes the ATS9872 and lists additional equipment.



About Your ATS9872

Thank you for your purchase of an ATS9872. This PCI Express (PCIe Gen 2 x4) based waveform digitizer has the following features:

- Two 8-bit resolution analog input channels
- Real-time sampling rate of 1 GS/s to 1 KS/s with internal clock and 1 GS/s with the 10 MHz Reference Clock (this 1 GHz sampling clock can then be decimated by a factor of 1, 2, 4, or any other integer value that is divisible by 4)
- On-board acquisition memory buffer of 512 Megasamples per channel
- Streaming of acquired data to PC host memory at 1.6 GB/s (exact rate is motherboard dependent)
- 450 MHz analog input bandwidth
- Half-length PCI Express (4-lane) card
- Analog trigger channel with software-selectable level and slope
- Software-selectable AC/DC coupling and fixed 50 Ω input impedance
- Pre-trigger and Post-Trigger Capture with Multiple Record capability
- NIST- or CNRC-traceable calibration
- Custom DMA engines for best latency protection against Windows® and Linux® operating systems
- Fully asynchronous software driver for fastest DMA with least CPU overhead

All ATS9872 digitizers follow industry-standard Plug and Play specifications on all platforms and offer seamless integration with compliant systems.

Detailed specifications of the ATS9872 digitizers are listed in [Appendix A - Specifications](#).

ATS9872 Export Control Classification

According to the Export Controls Division of Government of Canada, ATS9872 is currently not controlled for export from Canada. Its export control classification is N8, which is equivalent to ECCN EAR99. ATS9872 can be shipped freely outside of Canada, with the exception of countries listed on the [Area Control List](#) and [Sanctions List](#).

Furthermore, if the end-use of ATS9872, in part or in its entirety, is related to the development or deployment of weapons of mass destruction, AlazarTech is obliged to apply for an export permit.

Acquiring Data with Your ATS9872

You can acquire data either programmatically by writing an application for your ATS9872 or interactively with the AlazarDSO software for Windows or with AlazarFrontPanel for Linux. **Note that AlazarFrontPanel has a limited feature set.**

If you want to integrate the ATS9872 in your test and measurement or embedded OEM application, you can program the digitizer using C/C++, Python, MATLAB® or LabVIEW® for Windows or Linux operating systems.

- Windows operating systems supported are Windows 10, Windows Server® 2019, and Windows Server 2016. As Windows Server 2019 and 2016 are seldom used by our customers, they are expected to work but are not regularly tested with each software release. If there are issues related to Windows Server 2016 or 2019, tech support may not be as rapid as for other operating systems.

Only 64-bit Windows operating systems are supported.

Microsoft mainstream support for Windows 8.1 and Windows Server 2012 R2 ended in 2018. As such, AlazarTech has ceased development on these operating systems. Current software and driver releases may work with these operating systems but they are not officially supported.

Due to lack of demand and because Microsoft no longer supports these operating systems, AlazarTech no longer supports Windows 8, Windows 7, Windows XP, Windows Vista, Windows Server 2012, Windows Server 2008 R2, and Windows Server 2008.

- AlazarTech offers Dynamic Kernel Module Support (DKMS) drivers. The following Linux distributions are supported: Ubuntu, Debian, and RHEL®.

Users can download the DKMS driver for their specific distribution by choosing from the available drivers here:

<https://www.alazartech.com/en/linux-drivers/ats9872/622/>

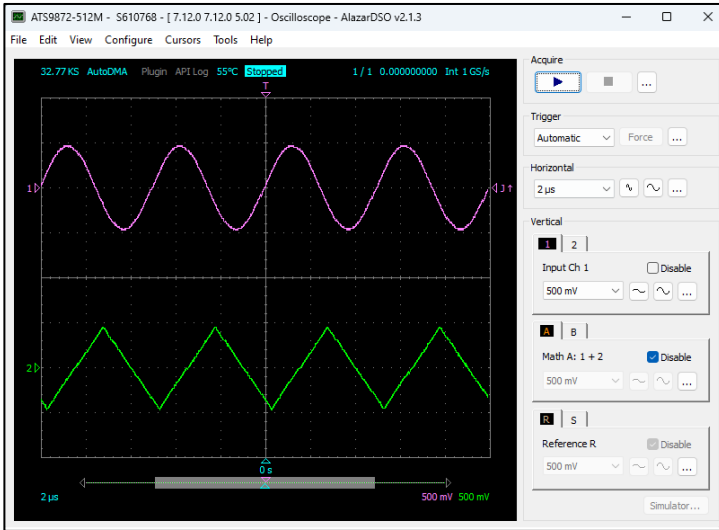
Only 64-bit Linux operating systems are supported.

AlazarTech DKMS drivers may work for Linux distributions other than Ubuntu, Debian, and RHEL, but they have not been tested and technical support may be limited.

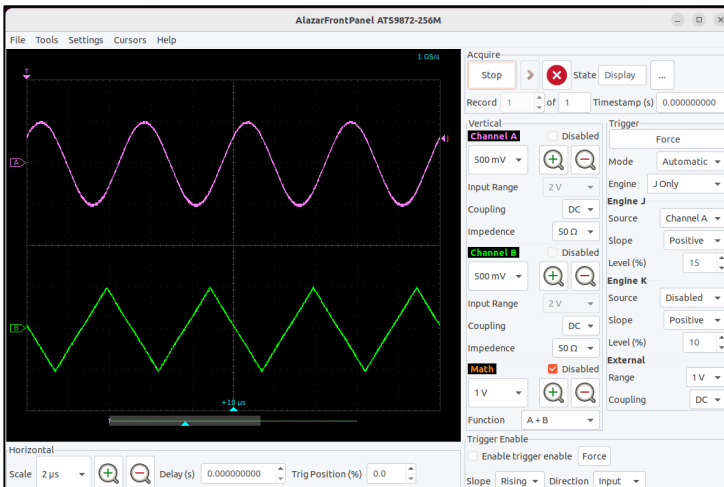
For using a programming language to acquire data from your ATS9872, you must purchase the ATS-SDK package.

Interactively Controlling your ATS9872 with AlazarDSO

The AlazarDSO oscilloscope emulation software for Windows allows you to interactively control your ATS9872 as you would a desktop oscilloscope.



Under Linux, the AlazarFrontPanel application is available.



Note that Alazar Front Panel has a limited feature set.

ATS-SDK API

The ATS-SDK API is used for programming the ATS9872 in C/C++, C#, LabVIEW, MATLAB and Python. It provides the exact same API that is used for writing AlazarDSO software.

The Windows-compatible version, called ATS-SDK, includes headers, libraries and source code sample programs written in C/C++, C#, Python, MATLAB, and LabVIEW.

The Linux-compatible version, called ATS-devel, includes headers, libraries and source code sample programs written in C++ and Python.

These programs can fully control the ATS9872 and acquire data in user buffers.

ATS-GPU

Interfacing waveform digitizers to GPUs involves creating a software mechanism to move data from one to the other and back to user buffers. The standard techniques used most often can get the job done but feature very low data throughput due to software overheads.

AlazarTech designed ATS-GPU to eliminate this software bottleneck so that data can be moved from AlazarTech digitizers to GPUs and from GPUs to user buffers at full PCIe bus speeds.

Once the data is available in GPU memory, many types of digital signal processing (DSP) can be done on this data at near-hardware speeds.

The **ATS-GPU-BASE** library provides a framework to allow real-time processing of data from AlazarTech PCIe digitizers on a CUDA® compatible GPU. To help you get started, ATS-GPU-BASE comes with an example of a user application that performs very simple signal processing (data inversion) you can use or modify.

Version 23.1.0 and higher of ATS-GPU-BASE includes a Boxcar Averaging example kernel that provides the ability to perform real-time boxcar averaging on signals acquired by AlazarTech waveform digitizers. It uses optimized GPU routines that allow raw data acquisition rates up to 6.9 GB/s. This signal processing module can lead to a major improvement of signal-to-noise ratio without using CPU resources and without doing FPGA programming.

ATS-GPU-OCT is the optional OCT Signal Processing library for ATS-GPU. It contains floating point FFT routines that have also been optimized to provide the maximum number of FFTs per second. Kernel code running on the GPU can do zero-padding, apply a windowing function, do a floating point FFT, calculate the

amplitude and convert the result to a log scale. It is also possible to output phase information.

ATS-GPU-NUFFT is an extension of ATS-GPU-OCT that allows non-uniform FFTs to be performed on data acquired uniformly in time domain using a fixed sampling rate. For SS-OCTs where the wavelength does not vary linearly in time, a fixed sampling rate results in data that is non-uniformly distributed in frequency domain. ATS-GPU-NUFFT allows linearized FFTs to be performed on such data. The non-uniform FFT requires a linearization function that describes how the wavelength of the SS-laser evolves during a sweep of the spectrum. Linearization function can either be user defined or measured directly from a k-clock signal.



Optional Upgrades & Accessories

AlazarTech offers the following upgrades and accessories for use with your ATS9872 digitizer:

- ATS9872: One Year Extended Warranty
- ATS9872: Sync 4X1G

Chapter 2

Installation and Configuration

This chapter describes how to unpack, install, and configure your ATS9872.

What You Need to Get Started

To set up and use your ATS9872, you will need the following:

- One or more ATS9872 digitizers



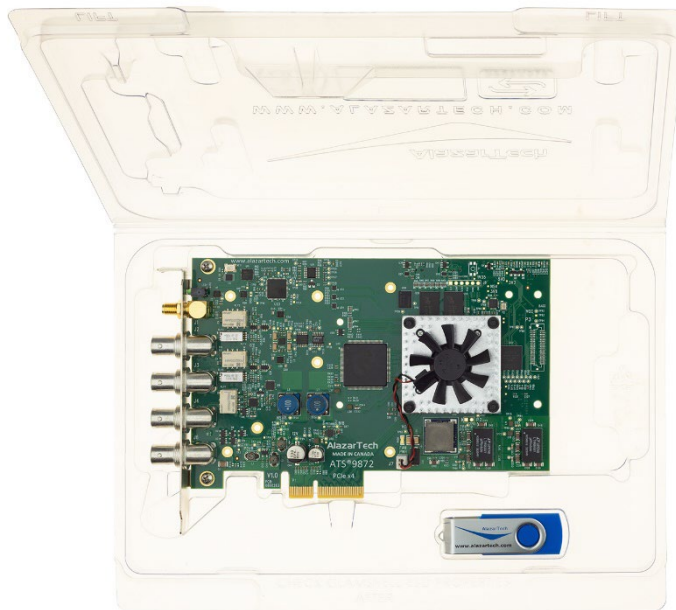
- ATS9872 Installation Software on USB Disk
(or downloaded software from www.alazartech.com/en/product/ats9872/622/)



Unpacking

Your digitizer is shipped in an antistatic clamshell package to prevent electrostatic damage to the digitizer. Electrostatic discharge can damage several components on the digitizer. To avoid such damage in handling the digitizer, take the following precautions:

- Ground yourself via a grounding strap or by holding a grounded object.
- Touch the antistatic package to a metal part of your computer chassis before removing the digitizer from the package.
- Remove the digitizer from the package and inspect the digitizer for loose components or any other sign of damage. Notify AlazarTech if the digitizer appears damaged in any way. Do *not* install a damaged digitizer into your computer.
- *Never* touch the exposed pins of the connectors.



Note: you may wish to take note of your product serial number before installation. The serial number is located on a white label on the back of your digitizer. You are also able to [obtain your serial number in software](#).

Installing the ATS9872 in Windows

Linux users: skip to [Installing the ATS9872 in a Linux System](#)


There are three main steps involved in installation in a Windows computer:

1. Physically install the digitizer(s) in your computer.
2. Install ATS9872 software driver, ATSApi Library, and AlazarDSO software that allows you to setup the hardware, acquire signals and view and archive them. There are 3 ways to do this:
 - 2 a) Install using Alazar Package Manager and AlazarTech’s Storage **(recommended)** or,
 - 2 b) Install using Alazar Package Manager and a local repository or,
 - 2 c) Install using downloaded files.
3. Optionally, install:
 - The ATS-SDK software development kit, which enables you to programmatically control the ATS9872.
 - The ATS-GPU library, which enables you to perform real-time processing of data from the ATS9872 on a CUDA[®]-compatible GPU.

The following paragraphs will guide you through this process in a step-by-step manner.

1. Physically install the digitizer in your computer

Identify an unused PCI Express slot on your motherboard. As per PCI Express specification, the 4-lane ATS9872 card is compatible with any 4-lane, 8-lane or 16-lane connector on the motherboard. Make sure that your computer is powered off before you attempt to insert the ATS9872 digitizer in one of the free PCI Express slots. For best noise performance, leave as much room as possible between your ATS9872 and other hardware. Always screw the digitizer bracket to the chassis in order to create a stable and robust connection to chassis ground. In the absence of such a connection, ATS9872 is not guaranteed to operate within the specifications listed elsewhere in this manual.

 Some motherboards may have a 16-lane connector, but only one or four of the lanes is connected to the motherboard chipset. Motherboard manufacturers refer to this as “Mechanically 16-lane, electrically 1 lane.” ATS9872 is fully compatible with such motherboards, but the data throughput across PCI Express bus will be limited by the number of lanes

2. Install ATS9872 software driver, ATSApi Library, and AlazarDSO software that allows you to set up the hardware, as well as acquire, view and archive signals.

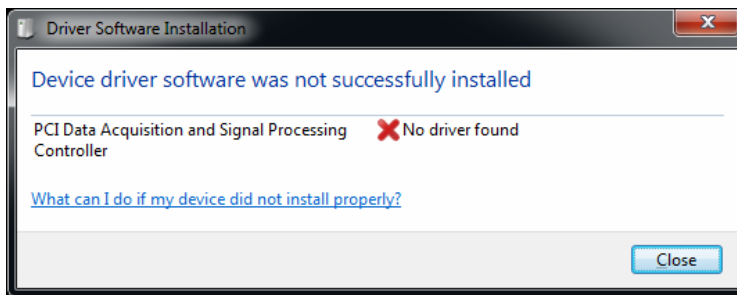
The following instructions guide you through the process of installing the ATS9872 software driver, ATSApi Library, and AlazarDSO software in a computer running Windows 11, 10, Windows Server 2019, or Windows Server 2016 operating systems.

Note that the majority of the images shown below were taken from a Windows 10 computer. Computers running other versions of Windows may have slightly different dialog boxes.

The Alazar Package Manager software provides a user-friendly interface that uses AlazarTech's cloud storage to allow the user to quickly install, update, or remove different versions of AlazarDSO, ATSApi and AlazarTech ATS Drivers.

When you first boot up the computer, the plug-n-play Windows operating system will detect the presence of a new PCI card and will attempt to install the device driver if found on the computer.

If the ATS9872 device driver is not found, Windows will display the following dialog box. Click **Close**.



2 a) Install using Alazar Package Manager and AlazarTech's Storage.

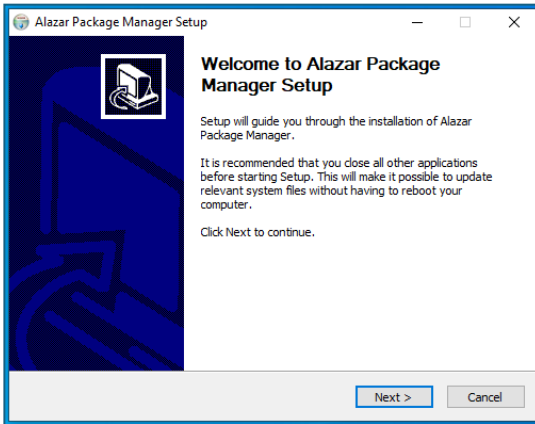
If you are installing Alazar Package Manager from the USB flash drive shipped with the ATS9872 digitizer, explore the contents of the drive:

- Run the Alazar-Package-Manager shortcut.
- Select the latest version of Alazar Package Manager

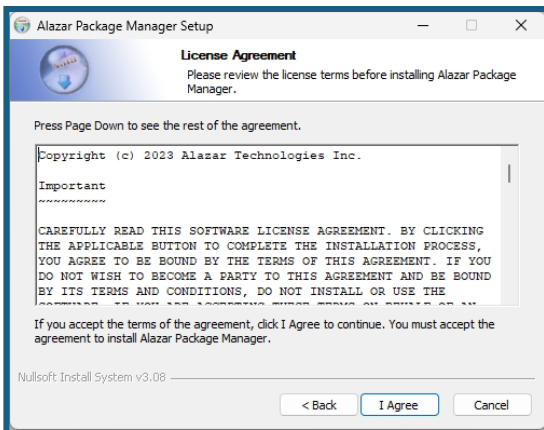
If you are installing Alazar Package Manager for Windows by downloading the installation file from the AlazarTech website:

- Download Alazar Package Manager installation file from the **Software Downloads** section at www.alazartech.com/apm
- Unzip the file downloaded in the previous step.
- Browse to the folder that contains the unzipped file, AlazarPackageManager.exe.
- Run this executable file and follow the on-screen instructions.

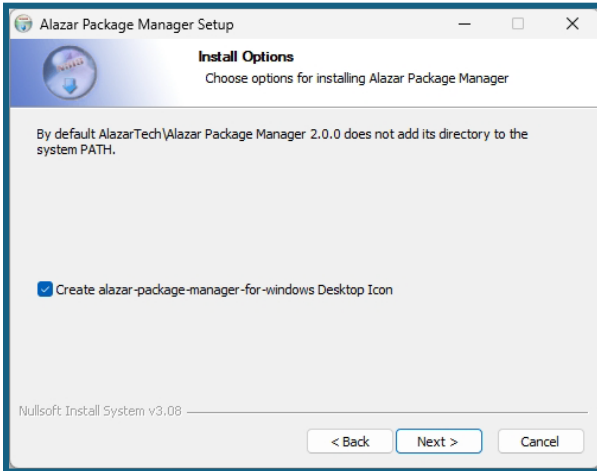
I. The Alazar Package Manager Setup screen will appear, click on **Next**.



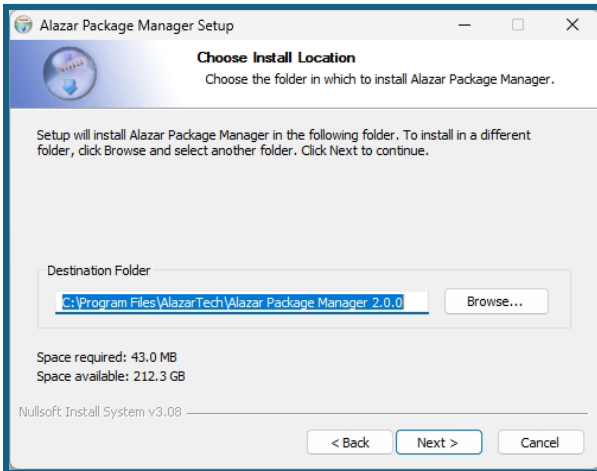
II. Carefully read the software license agreement and click on **I Agree** to proceed.



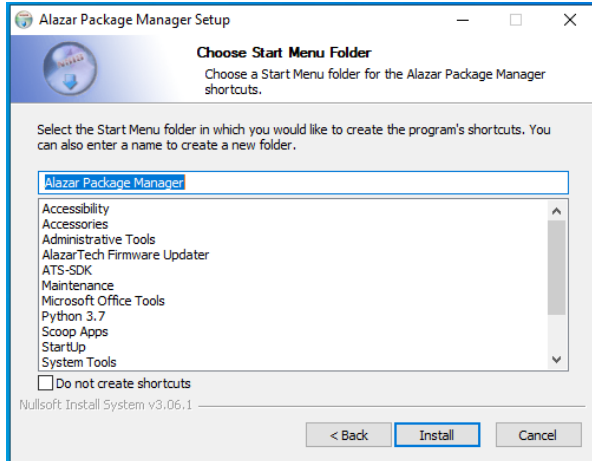
III. The next screen will be the Install Options screen. The create APM desktop icon option is checked by default. Click on **Next** to proceed.



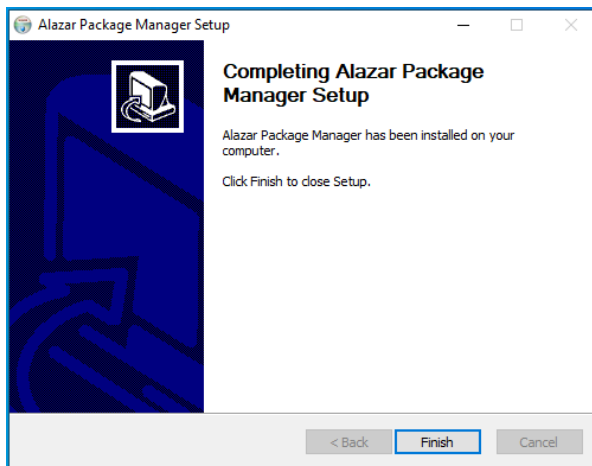
IV. On this screen select the destination folder in which you wish to install APM then click on **Next** to proceed.



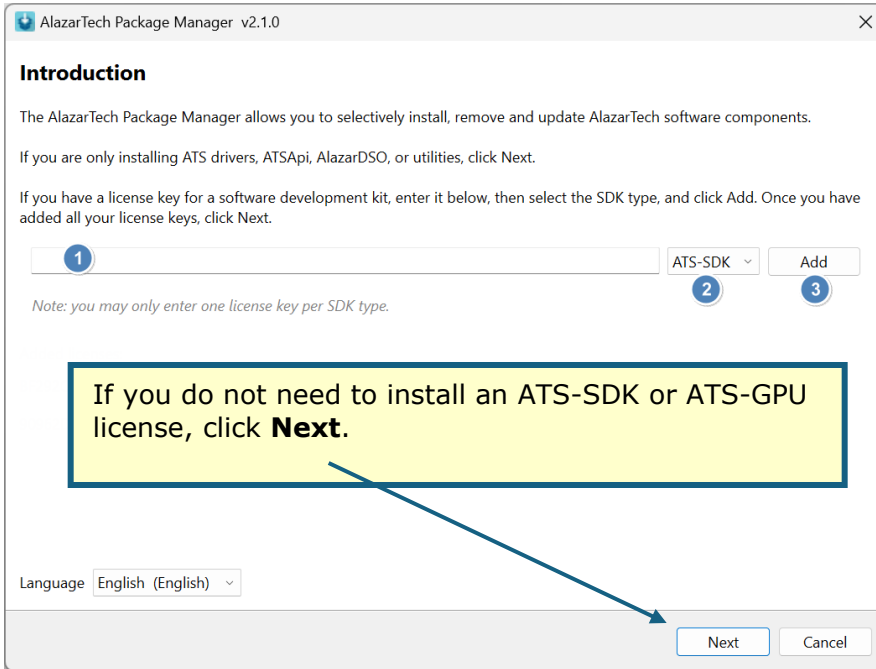
- V. If you wish to place APM in a pre-existing start menu folder, you can do so on this screen otherwise, a new Alazar Package Manager folder will be created. Click on **Install** to proceed.



- VI. Congratulations, this screen confirms that you have successfully installed Alazar Package Manager (APM). Click on **Finish** to exit the setup prompt.



- VII. After installing Alazar Package Manager (APM), run the application by clicking on the APM icon on your desktop or by browsing to the installation directory chosen during installation. The following window will be displayed.



If you have purchased an optional SDK license, make sure to use APM version 2.0 and higher as it is required for SDK installation:

- 1 Enter your license key¹.
- 2 Select the SDK type (e.g. ATS-SDK or ATS-GPU) from the pull-down menu.
- 3 Click **Add**.
- 4 Repeat steps 2 and 3 if you have more than one type of SDK to install, then click **Next**.

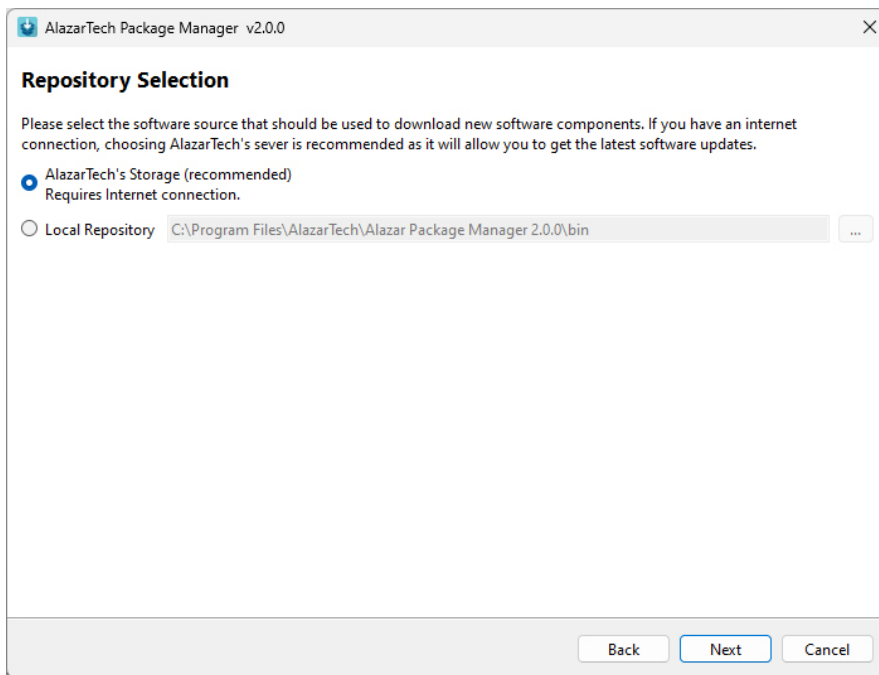
¹ SDK license keys are provided via an eDelivery email at time of purchase. Starting November 2023, AlazarTech implemented license keys for licensed software. If your SDK is under maintenance and you do not have a license key, please follow the steps shown here <https://www.alazartech.com/en/support/faq/?faq=1074> or contact sales@alazartech.com with your invoice or your SDK serial number.

VIII. At this point, APM will prompt you to select a repository to fetch and install the desired software. There are two possible selections available depending on whether the computer in which you wish to install the software has access to an internet connection. The following instructions will guide you through installing the software if your computer is connected to the internet.

Note: you **must** use *AlazarTech's Storage* if you are installing an SDK.

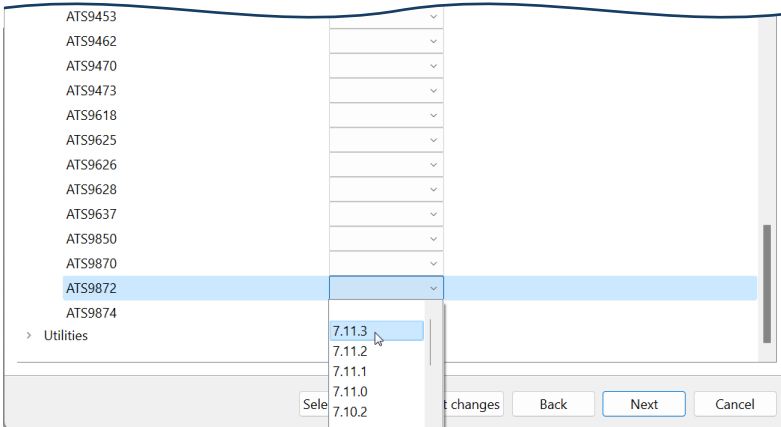
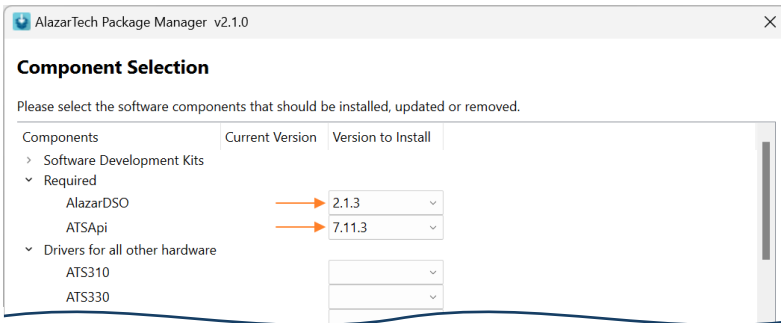
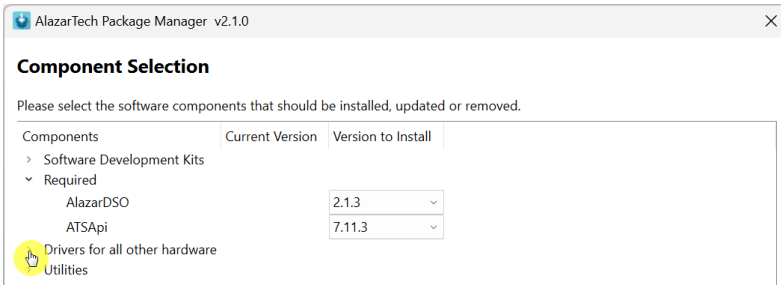
If you are installing the software by using a local repository, skip to [2.b\) Install using Alazar Package Manager and Local Repository](#).

Select the recommended option: **AlazarTech's Storage**.



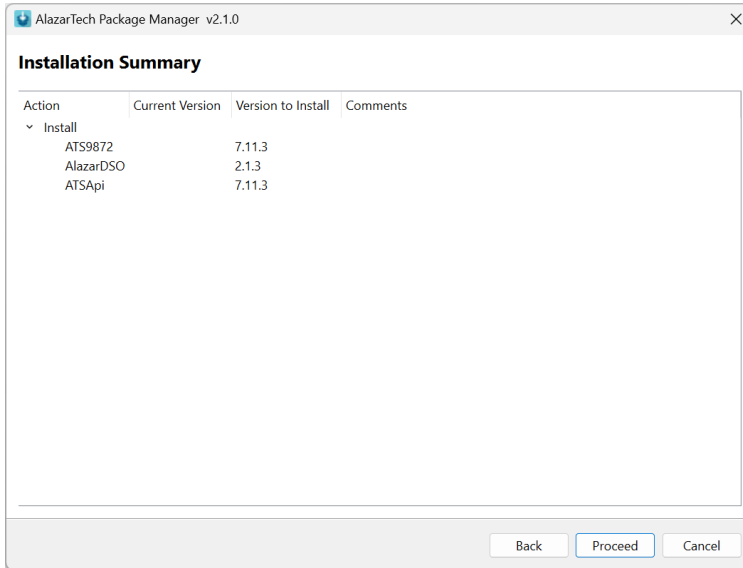
Click **Next**.

IX. On the **Component Selection** screen, expand the list of **Drivers**, then select the latest available version of AlazarDSO, ATSApi and ATS9872 driver.



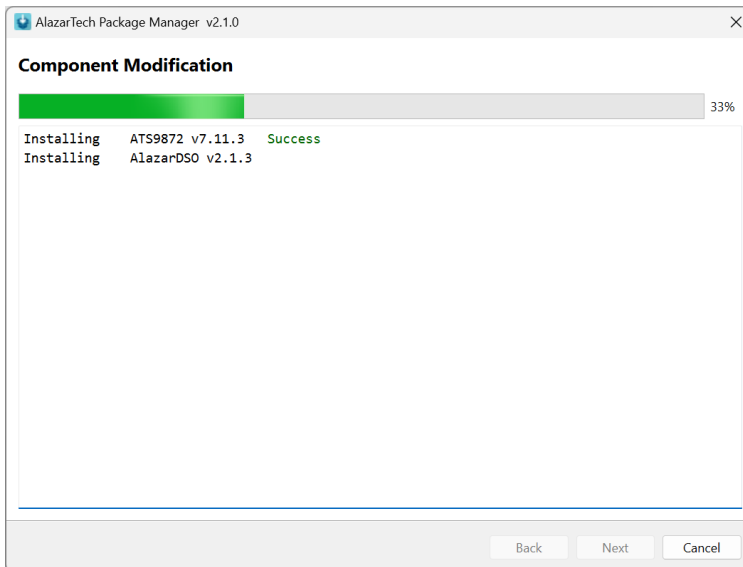
Click **Next**.

X. An installation summary will be provided.

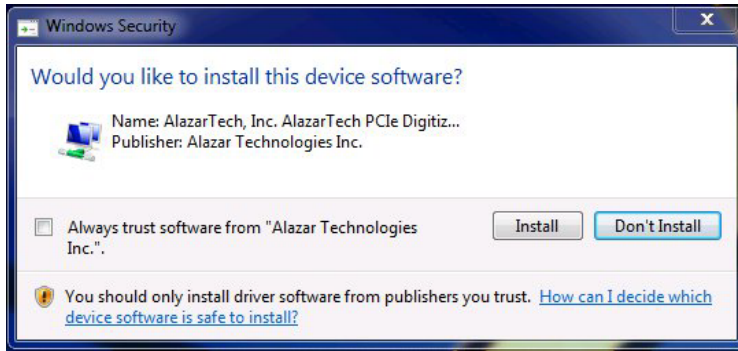


Confirm the details of the installation and click **Proceed**.

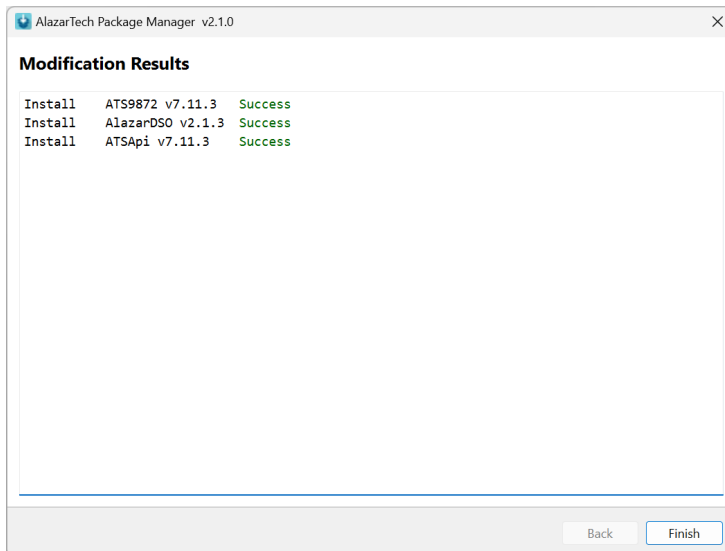
XI. Alazar Package Manager will install the selected software.



Depending on the settings of your Windows user account, you may see a **Windows Security** screen. Press **install**, after optionally checking *Always trust software from Alazar Technologies Inc.*



XII. After the installation is complete, Alazar Package Manager will report the changes applied.



Congratulations! You have now installed your ATS product driver, AlazarDSO, ATSApi library, and SDKs (if purchased) and are now ready to start your acquisition.

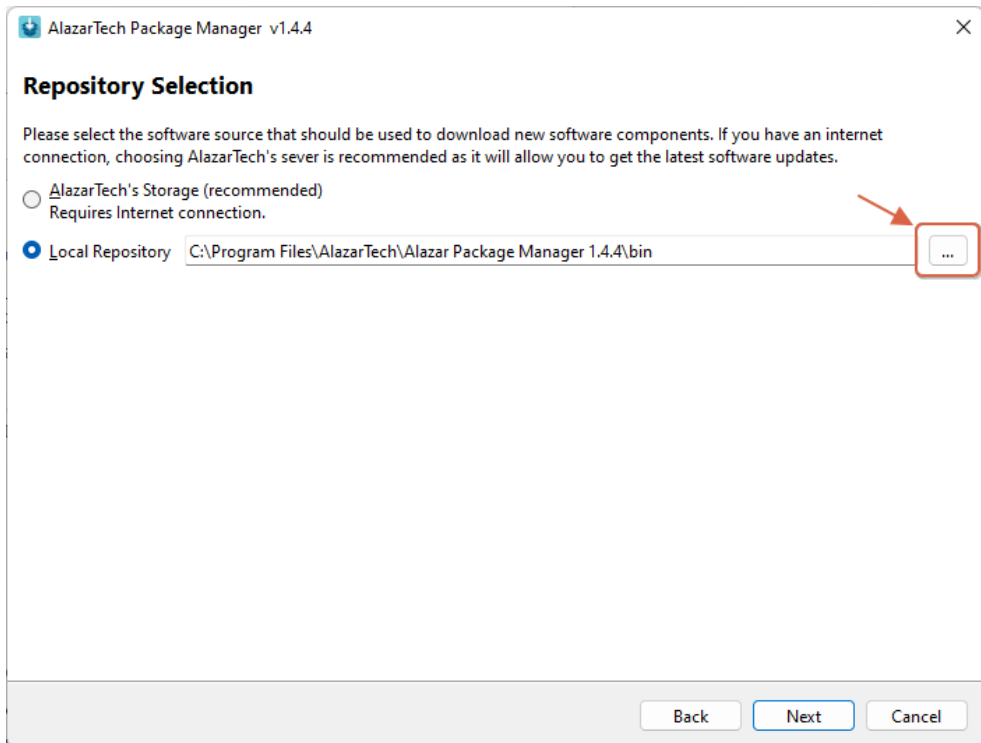
2 b) Install using Alazar Package Manager and Local Repository.

You can create an Alazar Package Manager local repository by saving ATS product driver(s), and AlazarDSO on a USB drive to install them on a computer that does not have internet access.

The AlazarTech USB flash drive shipped with the ATS9872 is a local repository.

To create your own local repository, you must download ATS product driver(s), and AlazarDSO from the **Software Downloads** section at www.alazartech.com/en/downloads/. You must also [download Alazar Package Manager](#) if it is not already installed.

The installation steps will be almost the same as section 2.a, except for VIII, where you would change the Local Repository by clicking on the ellipsis and navigating to your local repository:



This method is useful if you also wish to install AlazarDSO and/or other AlazarTech Windows drivers as Alazar Package Manager will install everything in one step.

2 c) Install using installation files downloaded from [alazartech.com](https://www.alazartech.com).

The recommended method of installing AlazarTech ATS digitizer Windows drivers and AlazarDSO is **Alazar Package Manager**. It provides a user-friendly interface that uses AlazarTech's cloud storage to allow the user to quickly install, update, or remove different versions of AlazarDSO, ATSApi and AlazarTech ATS Drivers.

If you prefer to install AlazarTech ATS drivers and AlazarDSO downloaded from the AlazarTech website (without using *Alazar Package Manager*):

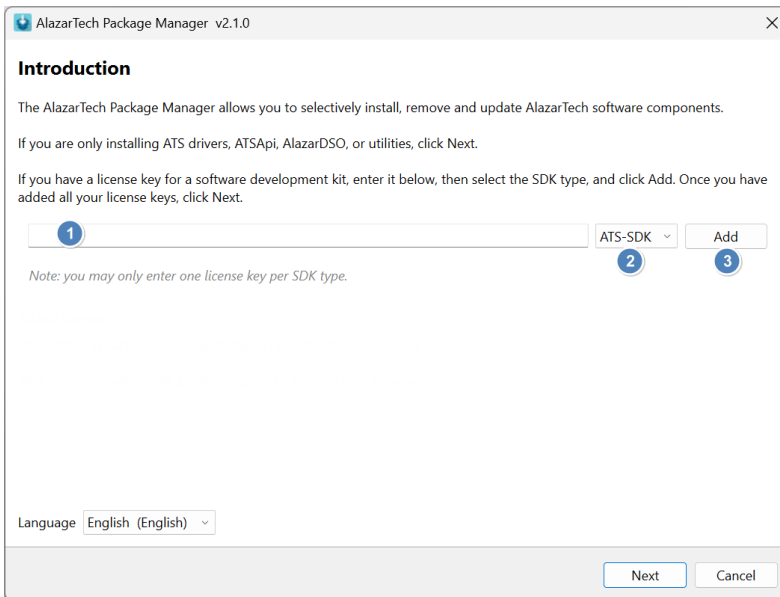
- Download AlazarTech ATS driver and AlazarDSO installation files from www.alazartech.com/en/downloads/
- Run the downloaded AlazarTech ATS driver .exe file and follow the on-screen prompts.
- Double-click on the downloaded AlazarDSO ZIP file, run the AlazarDSO-x.x.x-win64.exe file, and follow the on-screen prompts.

3. Optionally, install the ATS-SDK and ATS-GPU software

If you have purchased an optional SDK license, ATS-SDK and ATS-GPU are delivered electronically. You should have received an email with serial number(s), download link, and the software license key(s)¹ required for installation.

The download link is for the latest version of Alazar Package Manager, which is the new installer for ATS-SDK and ATS-GPU.

- I. First, install and launch Alazar Package Manager (*detailed steps shown here*). On the **Introduction** screen,

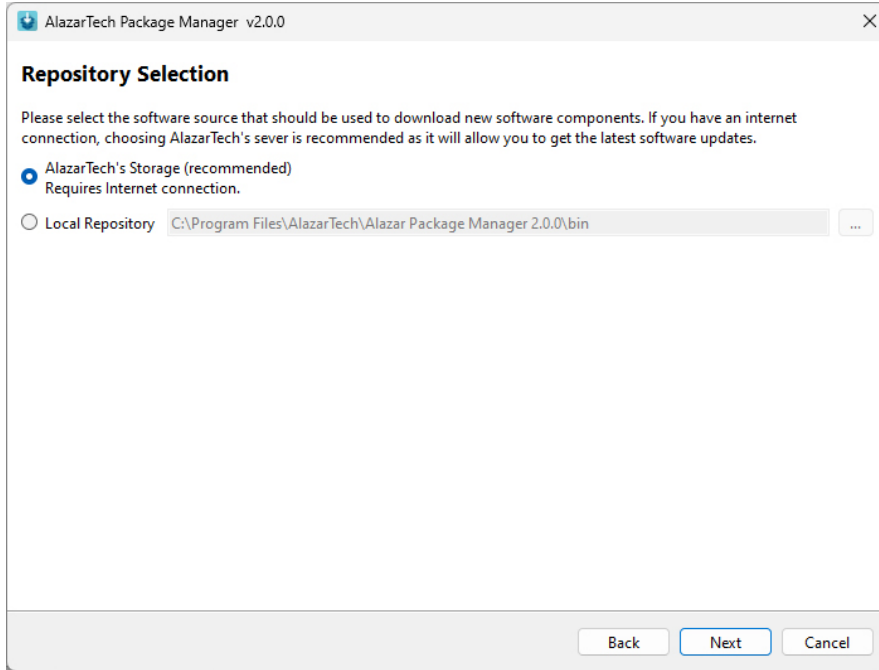


1. Enter your license key¹.
2. Select the SDK type (e.g. ATS-SDK or ATS-GPU) from the pull-down menu.
3. Click Add.
4. Repeat steps 2 and 3 if you have more than one type of SDK to install, then click **Next**.

¹ Starting November 2023, AlazarTech implemented license keys for licensed software. If your SDK is under maintenance and you do not have a license key, please follow the steps shown here <https://www.alazartech.com/en/support/faq/?faq=1074> or contact sales@alazartech.com with your invoice or your SDK serial number.

II. At this point, APM will prompt you to select a repository to fetch and install your SDKs. You **must** use *AlazarTech's Storage* for installing any SDK.

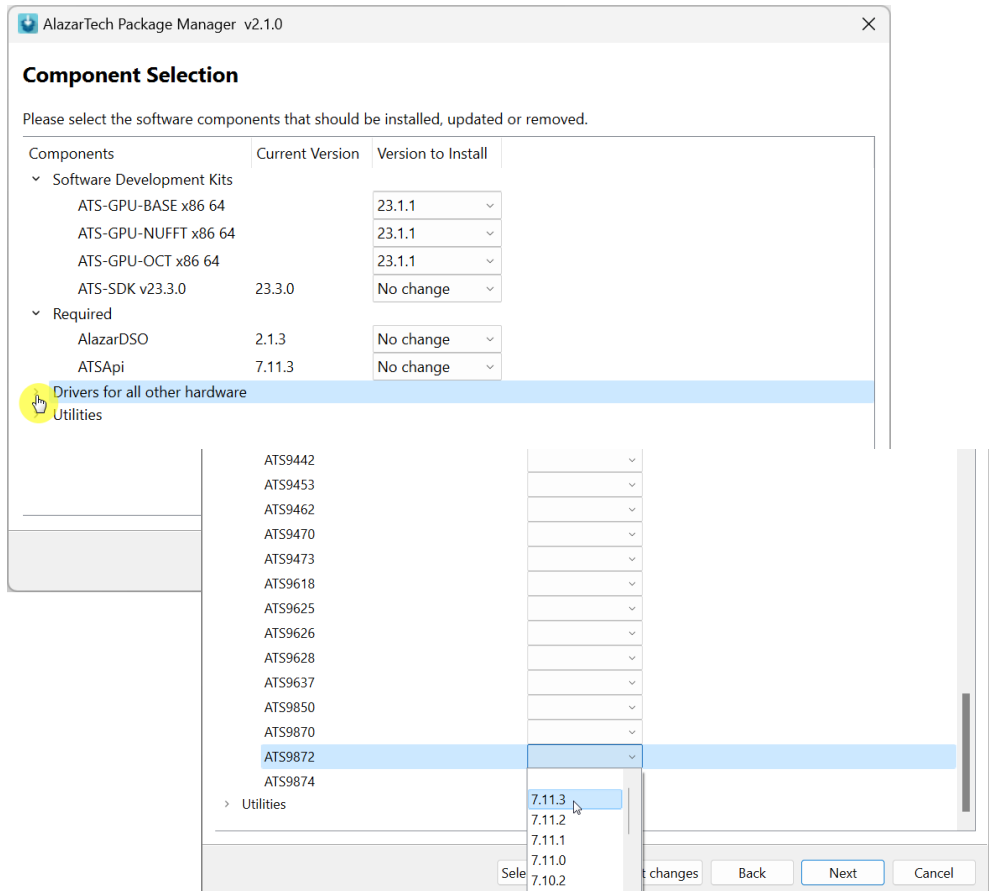
Select the recommended option: **AlazarTech's Storage**.



Click **Next**.

III. The **Component Selection** screen shows the items that will be installed

Note that you must install the ATS9872 drivers for any of the sample programs included with the ATS-SDK or ATS-GPU to work properly. If you have not already installed the drivers, you may do so here by expanding the list of **Drivers** and selecting the latest ATS9872 driver.

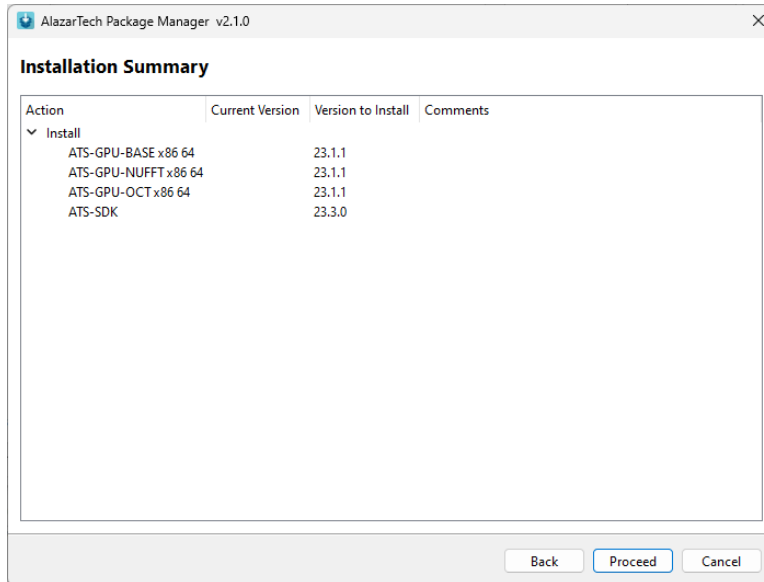


Components	Current Version	Version to Install
Software Development Kits		
ATS-GPU-BASE x86 64		23.1.1
ATS-GPU-NUFFT x86 64		23.1.1
ATS-GPU-OCT x86 64		23.1.1
ATS-SDK v23.3.0	23.3.0	No change
Required		
AlazarDSO	2.1.3	No change
ATSApi	7.11.3	No change
Drivers for all other hardware		
Utilities		

Driver ID	Version
ATS9442	
ATS9453	
ATS9462	
ATS9470	
ATS9473	
ATS9618	
ATS9625	
ATS9626	
ATS9628	
ATS9637	
ATS9850	
ATS9870	
ATS9872	7.11.3
ATS9874	
Utilities	

Click **Next**.

IV. An installation summary will be provided.



Confirm the details of the installation and click **Proceed**.

V. Alazar Package Manager will install the selected software. After the installation is complete, a **Modification Results** screen will report the applied changes.

Congratulations! You have now installed your ATS-GPU and/or ATS-SDK software development kits.

In order to receive the 1 year of maintenance included with your ATS-SDK and ATS-GPU, use the serial number provided with your digital delivery (or on the CD envelope for older purchases) and register your product(s) at:

www.alazartech.com/en/my-account/my-products/.

Installing the ATS9872 in a Linux System

The first step is to physically install the digitizer in your computer.

Identify an unused PCI Express slot on your motherboard. As per PCI Express specification, the 4-lane ATS9872 card is compatible with any 4-lane, 8-lane, or 16-lane connector on the motherboard. Make sure that your computer is powered off before you attempt to insert the ATS9872 digitizer in one of the free PCI Express slots. For best noise performance, leave as much room as possible between your ATS9872 and other hardware. Always screw the digitizer bracket to the chassis in order to create a stable and robust connection to chassis ground. In the absence of such a connection, ATS9872 is not guaranteed to operate within the specifications listed elsewhere in this manual.

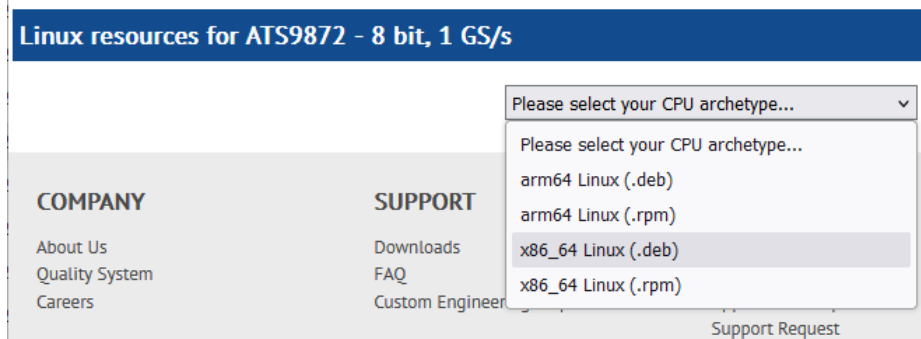
⚠ Some motherboards may have a 16-lane connector, but only one or four of the lanes is connected to the motherboard chipset. Motherboard manufacturers refer to this as “Mechanically 16-lane, electrically 1 lane.” ATS9872 is fully compatible with such motherboards, but the data throughput across PCI Express bus will be limited by the number of lanes.

You’ll now need to install all required AlazarTech Linux packages.

Note: Starting from driver version 7.1.2, Dynamic Kernel Module Support (DKMS) drivers are available for the following Linux distributions: Ubuntu, Debian, and RHEL. AlazarTech DKMS drivers may work for other Linux distributions, but they have not been tested and technical support may be limited.

To get the latest version of all AlazarTech Linux Packages, please go to: <https://www.alazartech.com/en/linux-drivers/ats9872/622/>

You must select your CPU type from the drop-down menu:



The screenshot shows a web page titled "Linux resources for ATS9872 - 8 bit, 1 GS/s". The page has a navigation menu with "COMPANY" (About Us, Quality System, Careers) and "SUPPORT" (Downloads, FAQ, Custom Engineering) sections. A dropdown menu is open, showing the text "Please select your CPU archetype..." and a list of options: "arm64 Linux (.deb)", "arm64 Linux (.rpm)", "x86_64 Linux (.deb)", and "x86_64 Linux (.rpm)". The "x86_64 Linux (.deb)" option is currently selected. A "Support Request" button is visible at the bottom right of the page.



The website will display the available Linux resources for your selection:

Linux resources for ATS9872 - 8 bit, 1 GS/s

x86_64 Linux (.deb) ▼

Drivers

ATS9872 x86_64 driver for Linux 7.11.3

[Release Notes](#)

[Getting started with installing Linux Drivers](#)

Utilities

Firmware Update Utility (CLI) 3.5.3

[Release Notes](#)

Firmware Update Utility (GUI) 3.5.3

[Release Notes](#)

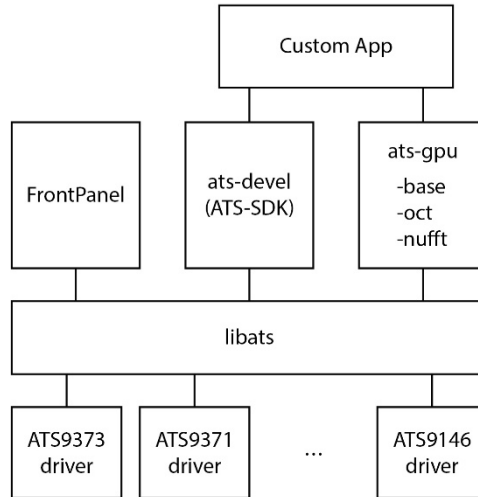
Software

Alazar-Front-Panel 0.5.0

[Release Notes](#)

ATS-SDK for Linux (also called ats-devel) installer can be downloaded here:
<https://www.alazartech.com/en/linux-drivers/ats-sdk/27/>

ATS-GPU installer can be downloaded here:
<https://www.alazartech.com/en/linux-drivers/ats-gpu-base/30/>



The AlazarTech software components used to communicate with digitizer boards and make acquisitions are divided into several packages that must be installed separately. Descriptions of each component are in the next section.

If you want to programmatically control your AlazarTech digitizer, you will need the following components:

- driver package for your AlazarTech digitizer
- libats
- ats-devel

If you want to simply use a GUI to immediately start acquiring data, you will need the following components:

- driver package for your AlazarTech digitizer
- libats
- Alazar-front-panel

If you want to use a GPU for signal processing of data acquired from your AlazarTech digitizer, you will need the following components:

- driver package for your AlazarTech digitizer
- libats
- ats-devel
- ats-gpu-base
- ats-gpu-oct
- (optional) ats-gpu-nufft

Description of AlazarTech Linux Packages:

- **libats**: The shared library that allows user programs to communicate with the board drivers.
- **ats-devel**²: Contains header files, documentation, and code samples required to build software that links against the AlazarTech library. The required password and download link are delivered electronically when you purchase ATS-SDK.
- **Alazar-front-panel**: A GTK-based virtual oscilloscope application that allows users to get started using the boards without developing their own software.
- **driver packages**¹: These packages each contain the driver for one of AlazarTech's products.
- **ats-gpu-base**²: Contains the header files, documentation, and code samples required to write an application in C/C++ to transfer data from AlazarTech PCIe digitizers to a CUDA-enabled GPU. Requires expert programming knowledge of CUDA development. Support is limited to the published user manual; no other technical support will be provided. Currently only available in .deb for x86_64.
- **ats-gpu-oct**²: Contains the header files, documentation, and code samples required to write an application to perform high-speed floating-point FFT on k-clocked data from AlazarTech PCIe digitizers. Requires ats-gpu-base and ats-devel (ATS-SDK). Currently only available in .deb for x86_64.
- **ats-gpu-nufft**²: Contains the header files, documentation, and code samples required to write an application to perform high-speed floating-point FFT on data that is uniformly sampled in time from AlazarTech PCIe digitizers. Requires ats-gpu-base, ats-gpu-oct, and ats-devel (ATS-SDK). Currently only available in .deb for x86_64.

Note:

¹ Beginning with driver version 7.1.2, AlazarTech Linux drivers use DKMS to not be dependent on the exact kernel version that the host machine is running.

² Starting November 2023, AlazarTech implemented license keys for licensed software. If your ats-devel or ATS-GPU are under maintenance and you do not have the license keys required for installation, please follow the steps shown here <https://www.alazartech.com/en/support/faq?faq=1074> or contact sales@alazartech.com with your invoice or your SDK serial number.

Installation Instructions

AlazarTech packages can be installed using the standard tools of Linux distributions, e.g. yum/dnf on RHEL/CentOS, and apt-get/apt on Debian/Ubuntu. For more information, refer to the documentation of your Linux distribution.

Note: The **ats-devel** package is not architecture specific.

On development machines, AlazarTech recommends installing all the packages provided with the boards. On the other hand, in a production environment, the **ats-devel** and **Alazar-front-panel** packages are optional. It is enough to install the **libats** package in addition to user-developed applications and the drivers corresponding to the boards used to get a working system.

To install packages for ATS9872 on your Linux system, follow these steps:

1. Once you have connected one or several ATS9872 in your computer, power it on.
2. Install the corresponding software packages for your ATS9872. A getting started guide is available on the ATS9872 Linux Resources page.
3. If you purchased the optional **ats-devel** (ATS-SDK for Linux) or one or more of the ATS-GPU libraries, you should have received an email with serial number, link to download, and the software license key(s)⁴ required for installation. Download and install **ats-devel** and **ATS-GPU**. Contact support@alazartech.com if you have not received the appropriate software package.

Note:

³ If you have previously installed different AlazarTech products in your computer, only the driver package will be new. Be sure to use the latest version of all packages though, as older libraries, for example, may not be compatible with all the features of recent drivers.

⁴ Starting November 2023, AlazarTech implemented license keys for licensed software. If your **ats-devel** or **ATS-GPU** are under maintenance and you do not have the license keys required for installation, please follow the steps shown here <https://www.alazartech.com/en/support/faq/?faq=1074> or contact sales@alazartech.com with your invoice or your SDK serial number.

Installation Troubleshooting

If you are experiencing difficulties using AlazarTech digitizers on your Linux system, please ensure that the following packages are all installed:

- alazar-front-panel
- libats
- driver package for your board (with the corresponding kernel version)

If these packages are installed, but the AlazarFrontPanel application does not detect your board, please run the following command at a prompt:

```
$ lsmod | grep ATS
```

If this command shows no output, the driver for your board did not start. To know more, run the following command:

```
$ /usr/local/AlazarTech/bin/ATS9872.rc start
```

In the output of this command, if you see a "version mismatch" error, it indicates that the kernel version you are running does not correspond to that with which the driver package was built. In this case, verify your kernel version by running command "uname -a" at a prompt, and verify that you have installed the correct driver package for the specific kernel version you are running.

If there is a "Required key not available" message in the output, it indicates that the driver will not load because of a signature issue. On kernels where the `EFI_SECURE_BOOT_SIG_ENFORCE` config is enabled, third-party drivers cannot load if UEFI Secure Boot is active. The simplest solution is to disable secure boot in the UEFI BIOS settings.

Updating ATS9872 Driver

From time to time, AlazarTech updates the device drivers for its products. These updates may be required for product enhancements or for bug fixes.

This section of the manual takes you through the steps required to update the device driver for the ATS9872 PCI Express waveform digitizer.

In other words, this section shows you how to install a newer version of the driver, when you already have a previous version of the driver installed on your machine.

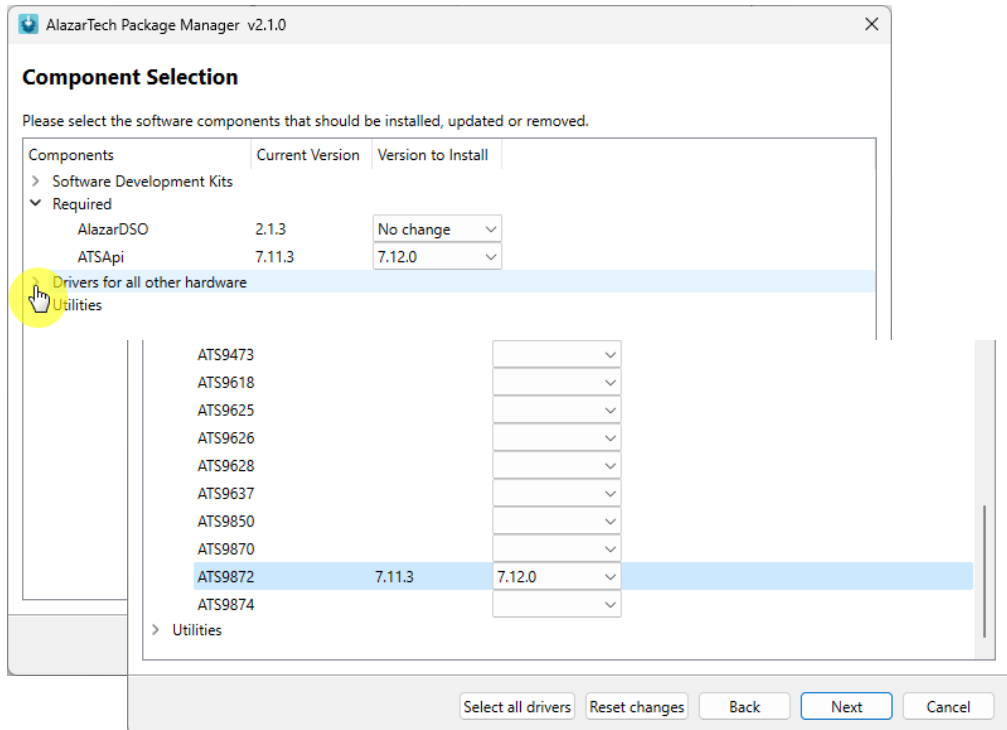
Please note:

AlazarTech recommends that you register your ATS9872 to receive notifications of new driver releases. Take note of your serial number and go to www.alazartech.com/en/my-account/my-products/.

You must be logged into your My AlazarTech account to register a product. If you do not have an account, sign up for one here: www.alazartech.com/en/register/.

MS-Windows:

- Run Alazar Package Manager that was provided on the USB flash drive included with your order.
- Select *AlazarTech's Storage* on the Repository Selection screen, then follow the on-screen prompts; the latest versions of AlazarDSO, the ATSApi library will be presented for you to update. You will need to expand the **Drivers for all other hardware** to select your digitizer.



Alternately, you may download the latest driver from AlazarTech's website:
<https://www.alazartech.com/en/product/ats9872/622/>.

Run the downloaded installation file (*.exe extension). For example, the installation file for driver version 7.11.3 is called **ATS9872_Driver_V7.11.3.exe**, and follow the instructions.

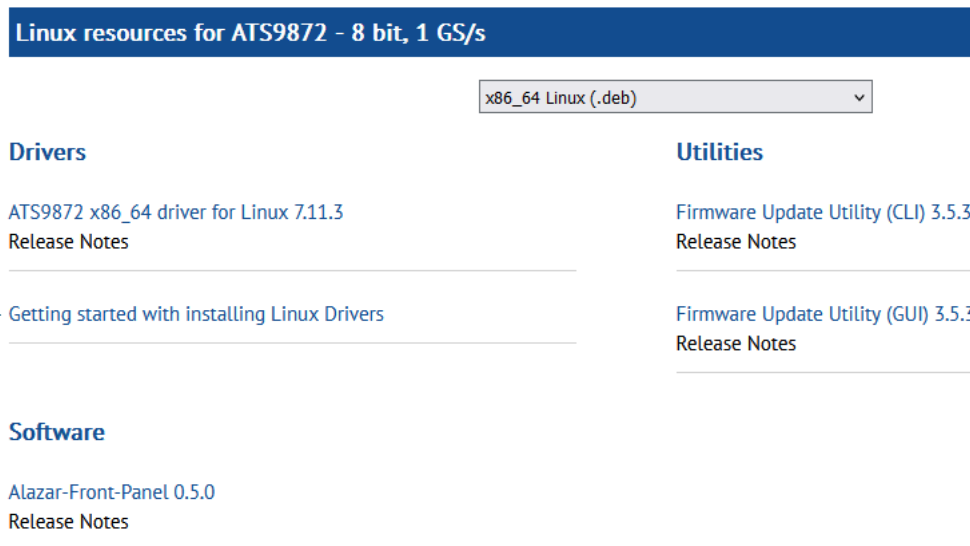
Linux:

Download and install the latest driver for your Linux distribution (RHEL, Debian or Ubuntu) from: <https://www.alazartech.com/en/linux-drivers/ats9872/622/>

You must select your CPU type from the drop-down menu:



The website will display the available Linux resources for your selection:

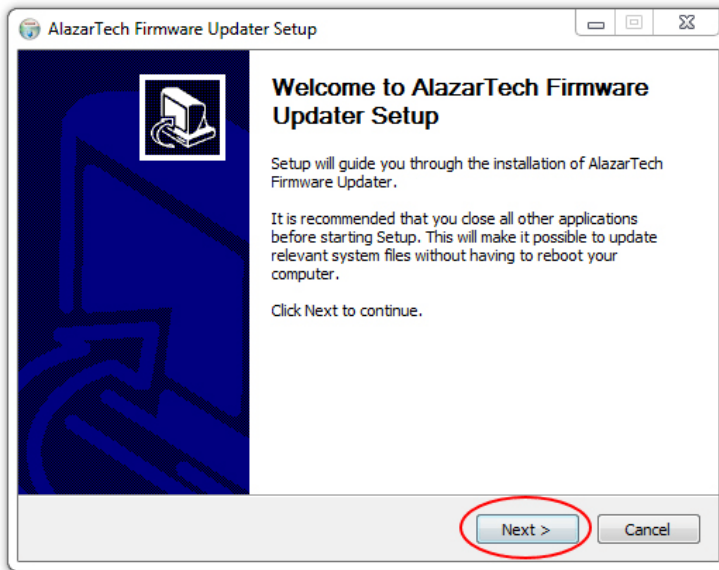


AlazarTech packages can be installed using the standard tools of Linux distributions, e.g. yum/dnf on RHEL/CentOS, and apt-get/apt on Debian/Ubuntu. For more information, refer to the documentation of your Linux distribution and the *Getting started with installing Linux Drivers* document in Linux Resources.

Updating ATS9872 Firmware in Windows

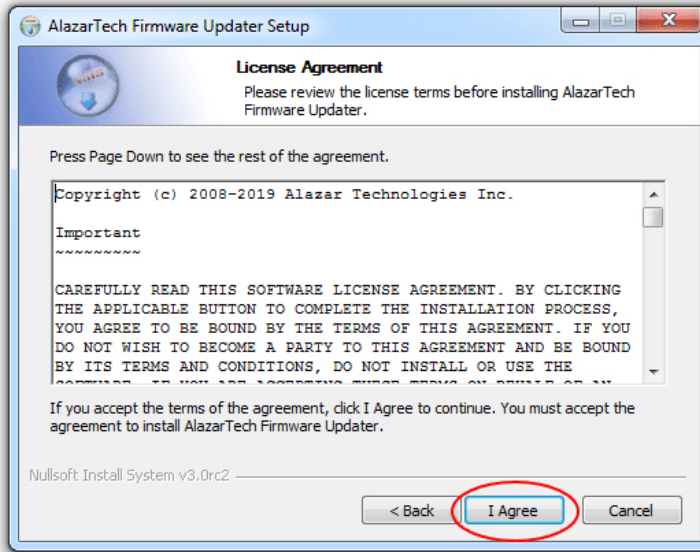
Linux users: skip to [Updating ATS9872 Firmware in a Linux System](#)

- Go to the [AlazarTech website](#) and choose your board from the **PRODUCTS** drop-down menu
- Down on the product's page, from the **Software** section:
 1. Download the **Firmware Update Utility**
 2. Download the **Firmware** file – *E.g.: ATS9872 Firmware*
- Unarchive both files. Make sure that the **Windows Driver** is installed on this computer. Also make sure that all other applications using this driver or **ATSAPI.dll** are closed (E.g.: AlazarDSO).
- Run the executable file **fwupdater-x.x.x.exe** (where x.x.x is the firmware updater version number) to install AlazarTech Firmware Updater.

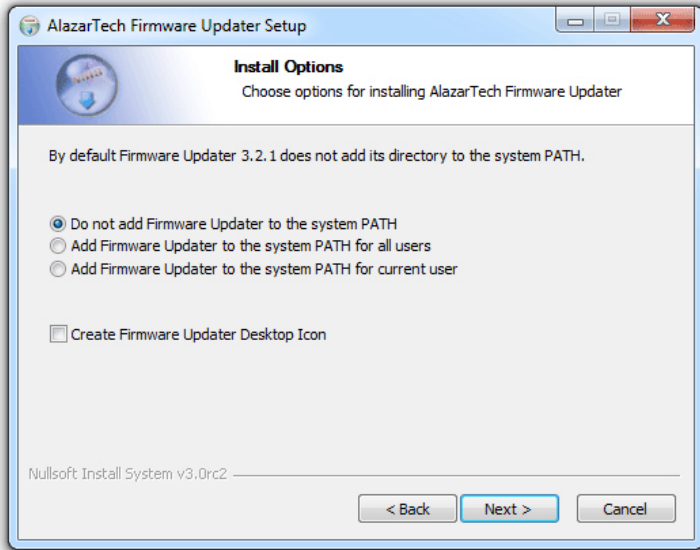


Click **NEXT**

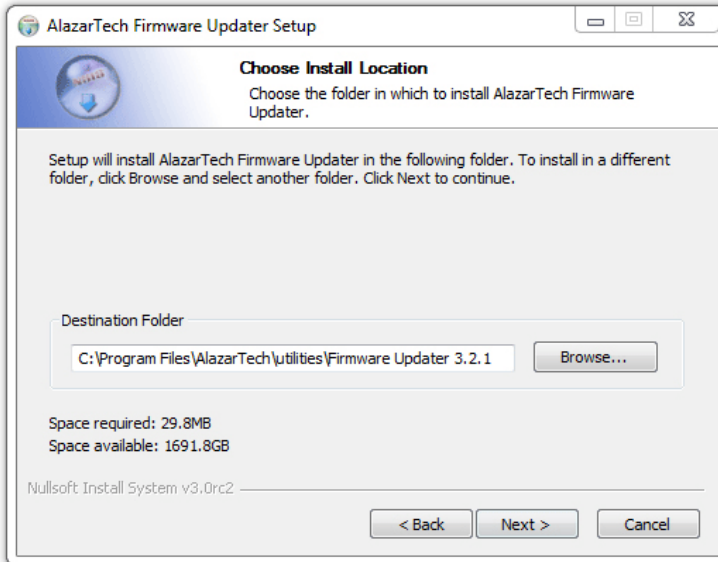
- You must **Agree** to the License Agreement in order to proceed



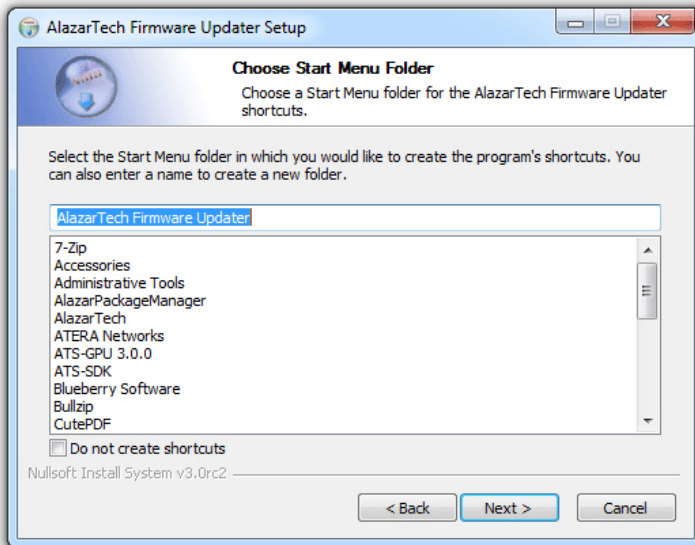
- Select your Install Options and click **NEXT**



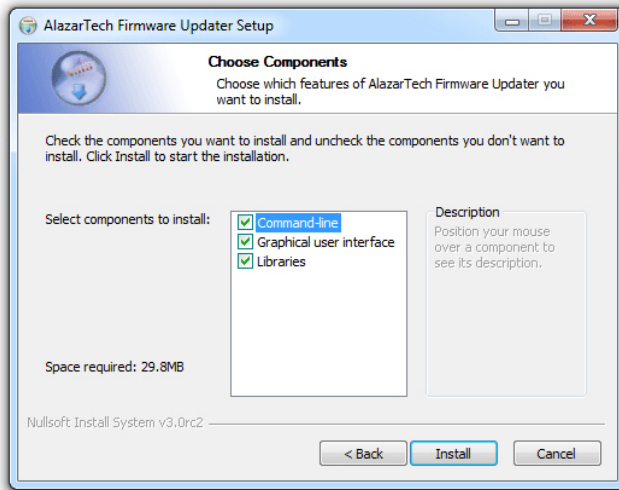
- Select your Installation Location and click **NEXT**



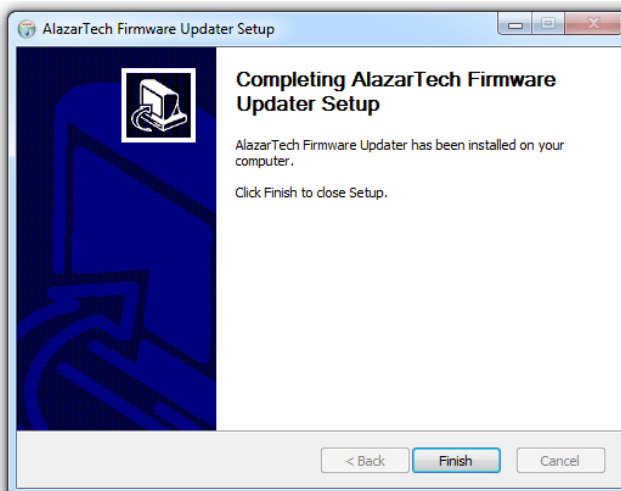
- Select your Start Menu Folder and click **NEXT**



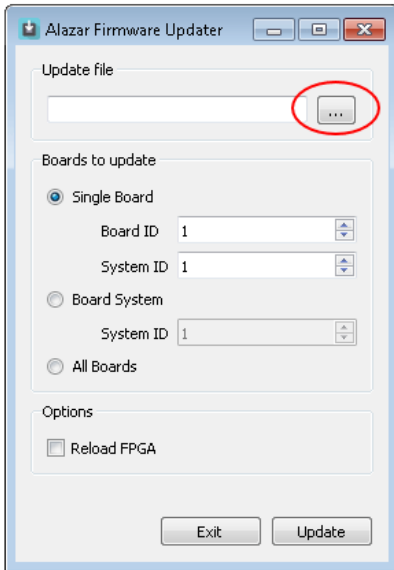
- Select your Components and click **NEXT**. AlazarTech Firmware Updater 3.0+ comes in two forms: a graphical user interface (GUI), which is recommended for most users, and a command line interface (CLI) that is more appropriate for OEMs and advanced users.



- Click **FINISH** to complete the installation. Once the firmware updater is installed, you can start it from the **AlazarTech Firmware Updater** start menu item, or by pressing the start button and typing **Firmware Updater**.



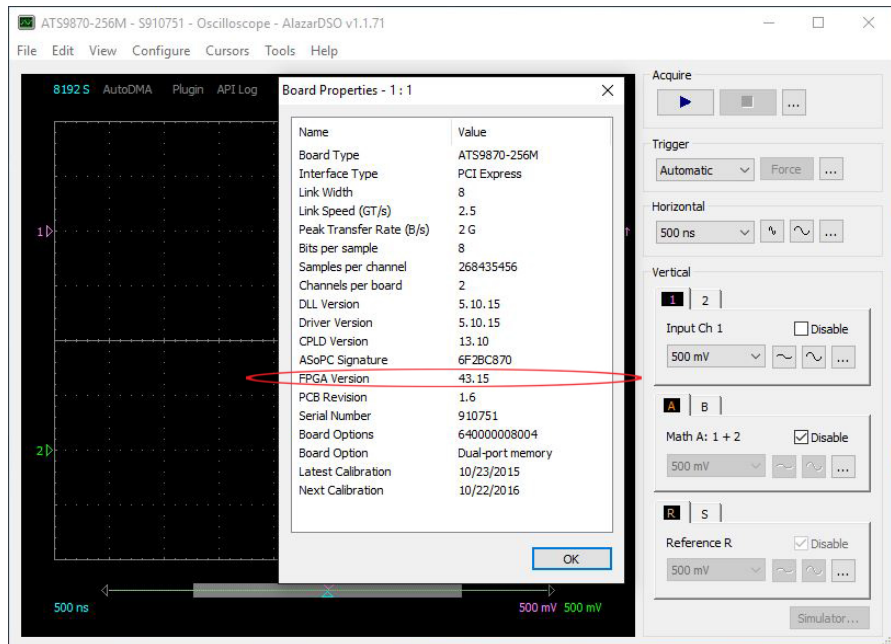
- When you start **AlazarTech Firmware Updater**, you will see the following:



In **Update file**, click on the ellipsis to choose the corresponding firmware (.pof file) you previously downloaded.

- Select the board(s) that you wish to update. If you have only one board installed in the computer, you can leave the **Boards to update** section unmodified. The options available are:
 - **Single Board Only:** Updates one digitizer in the system. The digitizer to update is selected with the **Board ID** and **System ID** fields.
 - **Boards System:** Updates all the boards in a system. The boards system is selected with the **System ID** field.
 - **All Boards:** Updates all the boards in the computer
- Once all the parameters are set properly, click **UPDATE** to start the FPGA update. A window will appear to indicate the progress of this process.

- After the update is complete, you should power cycle the computer except if you selected the "Reload FPGA" option. You can then confirm that the update worked:
 - Run AlazarDSO software
 - Press **F4** key. It will display the Board Properties page. One of the lines is **FPGA version**. Make sure the version number displayed corresponds to the version of the FPGA you downloaded (.exe file name).



Updating ATS9872 Firmware in a Linux System

Note: The following instructions have been created using RHEL. Users with other Linux distributions may have different on-screen instructions to follow, as well as a different interface.

1. Go to the [AlazarTech website](#) and navigate to your product's page by choosing your board model from the PRODUCTS drop-down menu
2. From the Drivers section on your product's page, click on *Linux Resources*.

Software

AlazarDSO

Version: 2.1.3

[Release Notes](#)

Drivers

Alazar Package Manager for Windows

Version: 2.1.0

[Release Notes](#)

ATS9872 x86_64 driver for Windows

Version: 7.11.3

[Release Notes](#)

Linux Resources

Linux ReadMe

Firmware

3. Select your CPU and Linux distribution (DEB or RPM), then download **fwupdater-x.x.x-GUI.exe**. Note that Firmware Update utility is only available for x86_64 CPUs at this time.

Linux resources for ATS9872 - 8 bit, 1 GS/s

x86_64 Linux (.deb) ▾

Drivers

[ATS9872 x86_64 driver for Linux 7.11.3](#)
[Release Notes](#)

[Getting started with installing Linux Drivers](#)

Software

[Alazar-Front-Panel 0.5.0](#)
[Release Notes](#)

Utilities

[Firmware Update Utility \(CLI\) 3.5.3](#)
[Release Notes](#)

[Firmware Update Utility \(GUI\) 3.5.3](#)
[Release Notes](#)

Note: The following instructions have been created for the graphical user interface (GUI) variation of the firmware updater as it is recommended for most users.

To install the command-line interface (CLI) variation, download **fwupdater-x.x.x-CLI.exe** instead.

4. Click on **ATS9872 Firmware** to download the firmware file

Software

[AlazarDSO](#)

Version: 2.1.3

[Release Notes](#)

Drivers

[Alazar Package Manager for Windows](#)

Version: 2.1.0

[Release Notes](#)

[ATS9872 x86_64 driver for Windows](#)

Version: 7.11.3

[Release Notes](#)

Linux Resources

[Linux ReadMe](#)

Firmware

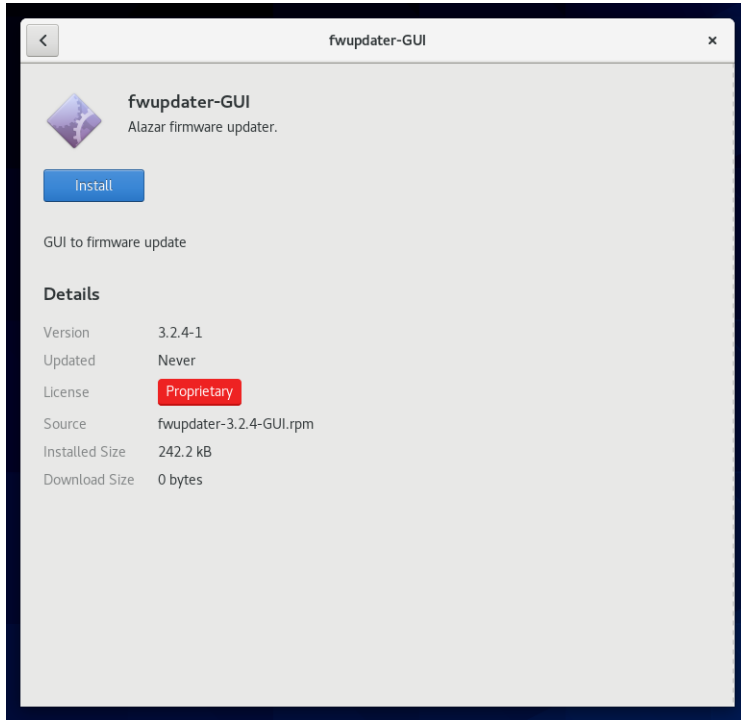
[ATS9872 Firmware](#)

Version: 5.5.1

[Release Notes](#)

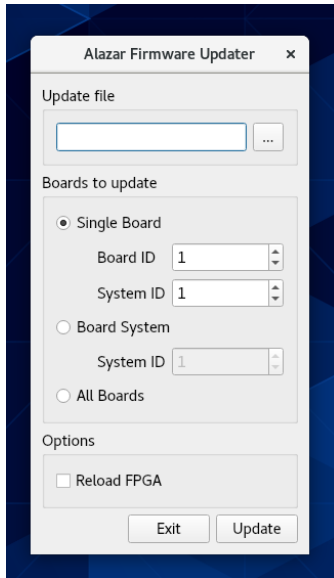
- Unarchive both files. Make sure that the Linux Driver is installed on this computer. Also make sure that all other applications using this driver or the ATSApi Library are closed (E.g.: AlazarFrontPanel).
- Run the executable file **fwupdater-x.x.x-GUI.exe** (where x.x.x is the firmware updater version number) to install AlazarTech Firmware Updater.

- Click the blue **Install** button to begin the process.



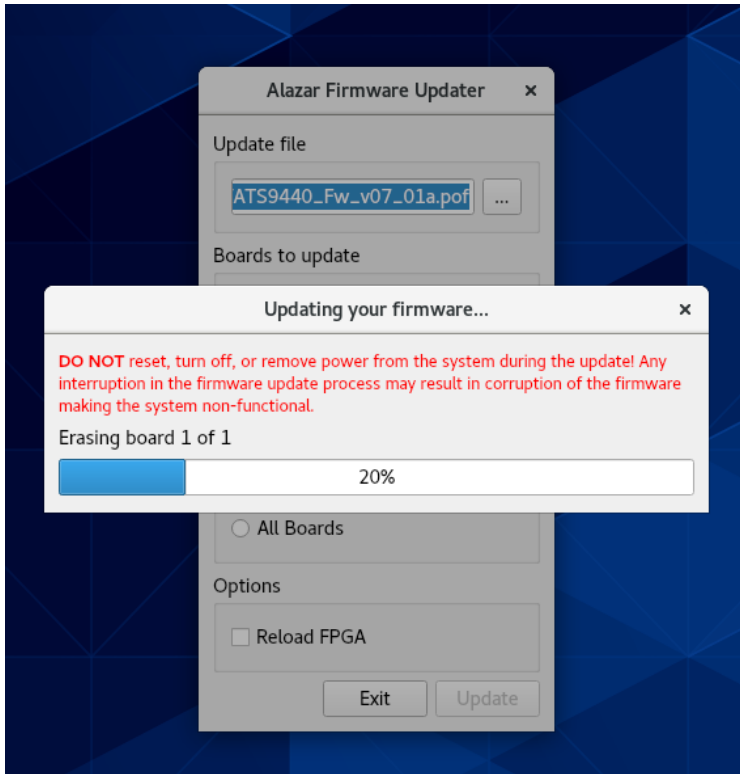
- Once the firmware updater is installed, you can start it from the Alazar Firmware Updater start menu item, or by pressing the start button and typing Firmware Updater.

- When you start AlazarTech Firmware Updater, you will see the following:

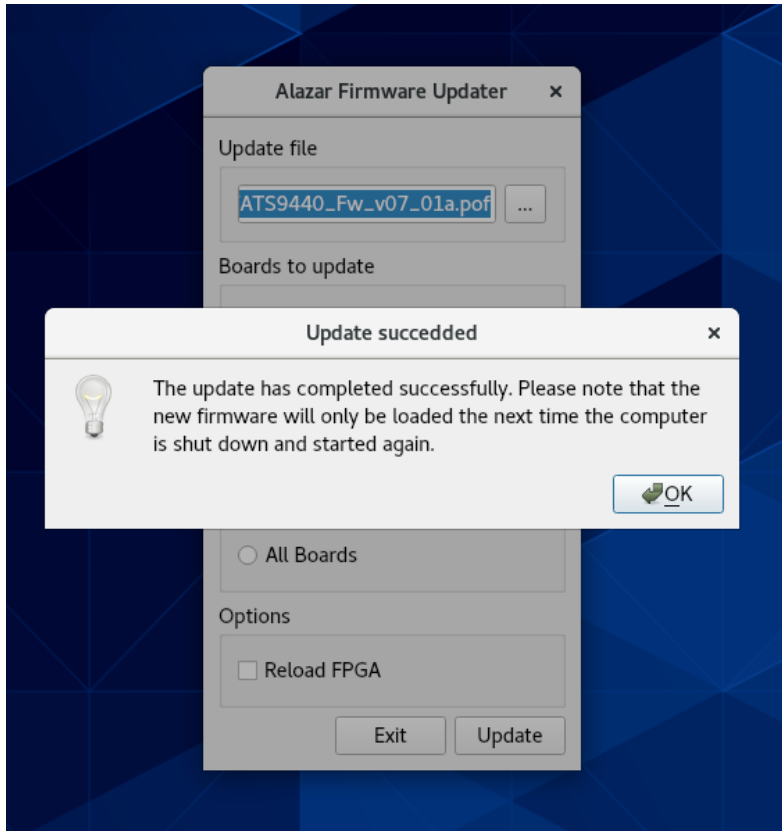


- In Update file, click on the ellipsis to choose the corresponding firmware (.pof file) you previously downloaded.
- Select the board(s) that you wish to update. If you have only one board installed in the computer, you can leave the Boards to update section unmodified. The options available are:
 - **Single Board Only:** Updates one digitizer in the system. The digitizer to update is selected with the Board ID and System ID fields.
 - **Boards System:** Updates all the boards in a system. The boards system is selected with the System ID field.
 - **All Boards:** Updates all the boards in the computer

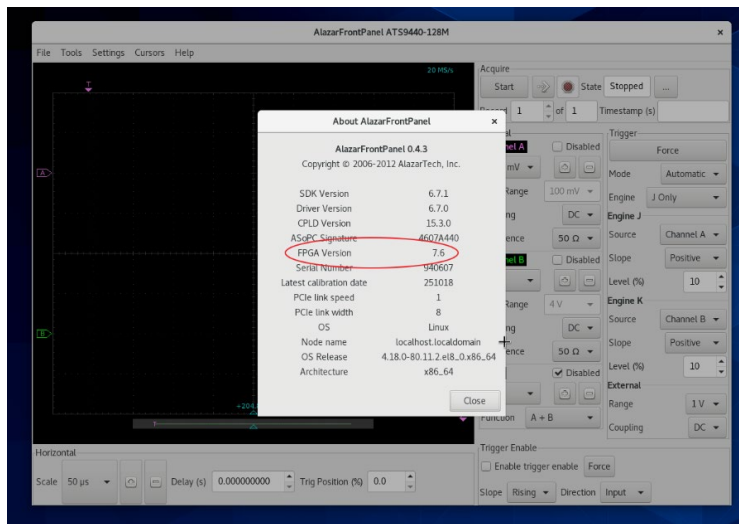
- Once all the parameters are set properly, click UPDATE to start the FPGA update. A window will appear to indicate the progress of this process.



- After the update is complete, you will see a window indicating that the update was successful. You should shut down, then turn on the computer (**Note:** Simply restarting your computer will not be enough to reload the FPGA).



- You can then confirm that the update worked:
 - Run AlazarFrontPanel software
 - Next, click **Help** and then select **About** from the drop-down menu that follows.
This will display an *About AlazarFrontPanel* pop-up.
 - One of the lines is FPGA version. Make sure the version number displayed corresponds to the version of the FPGA you downloaded (.exe file name).



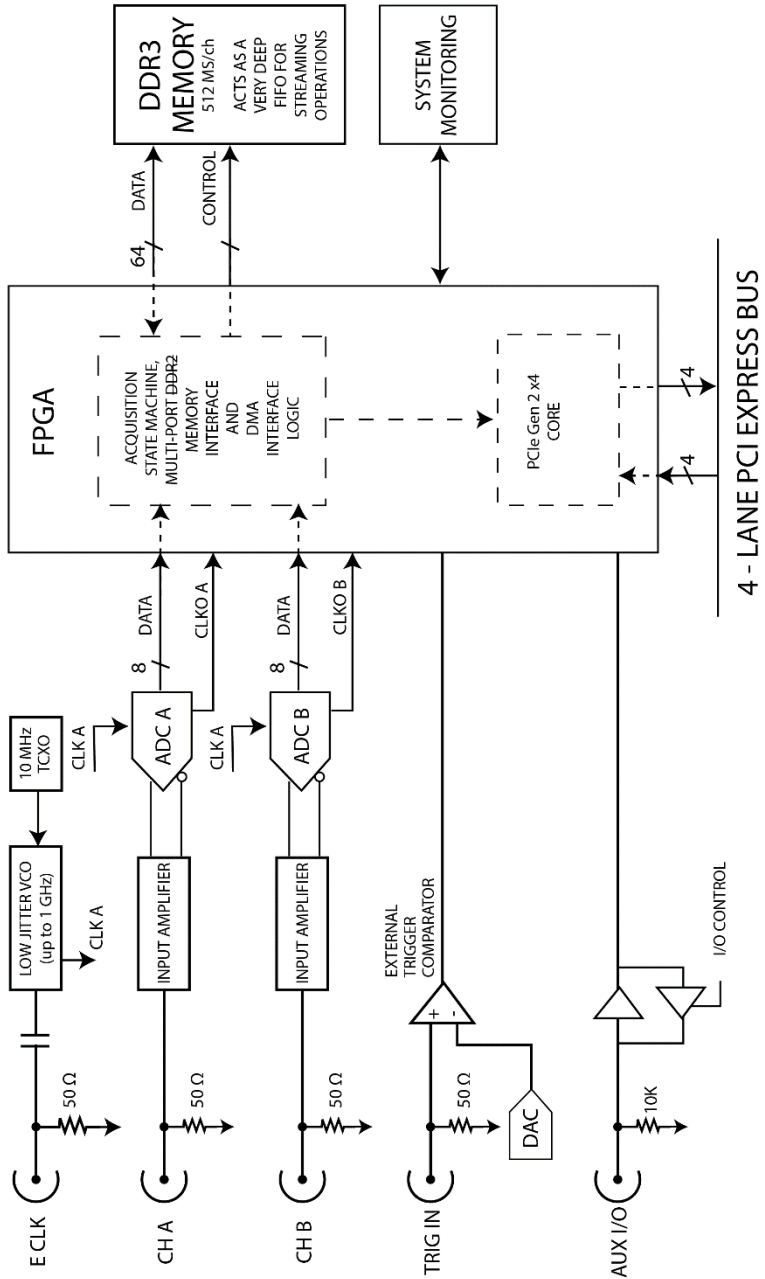
Chapter 3

Hardware Overview

This chapter includes an overview of the ATS9872, explains the operation of each functional unit making up your ATS9872, and describes the signal connections.

Following is a high-level block diagram of ATS9872.

ATS9872 BLOCK DIAGRAM



Physical Overview

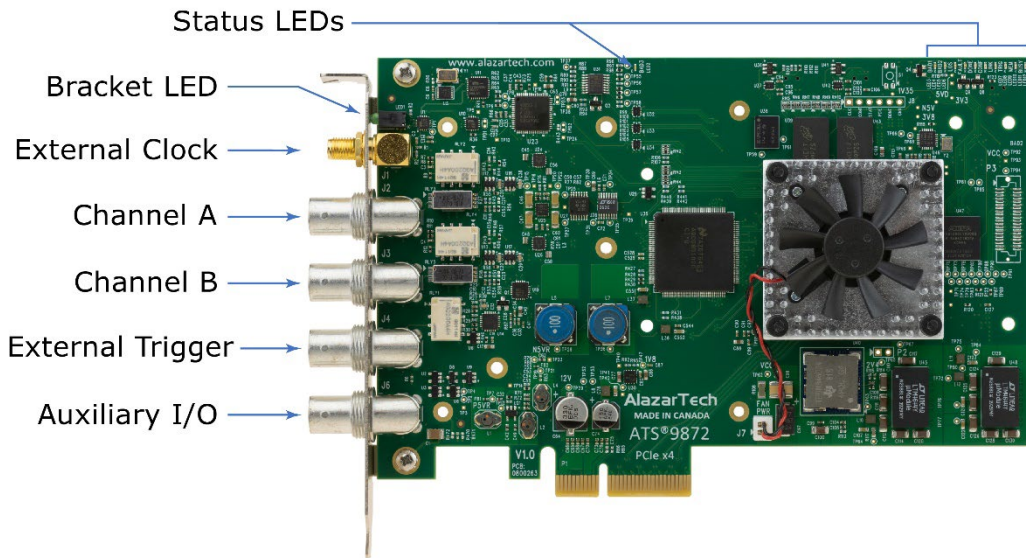


Figure 1 - ATS9872 Overview

ATS9872 has 1 SMA connector and 4 BNC connectors:

SMA:

- ECLK: The external clock input

BNC:

- CH A: The channel A input
- CH B: The channel B input
- TRIG IN: The external trigger input
- AUX I/O: An auxiliary input/output connector

It also has a bracket LED (LED1) that can be software-controlled and is used for identification.

Lastly, ATS9872 has various *Status LEDs* on the top edge of the PCB that can be used for debugging

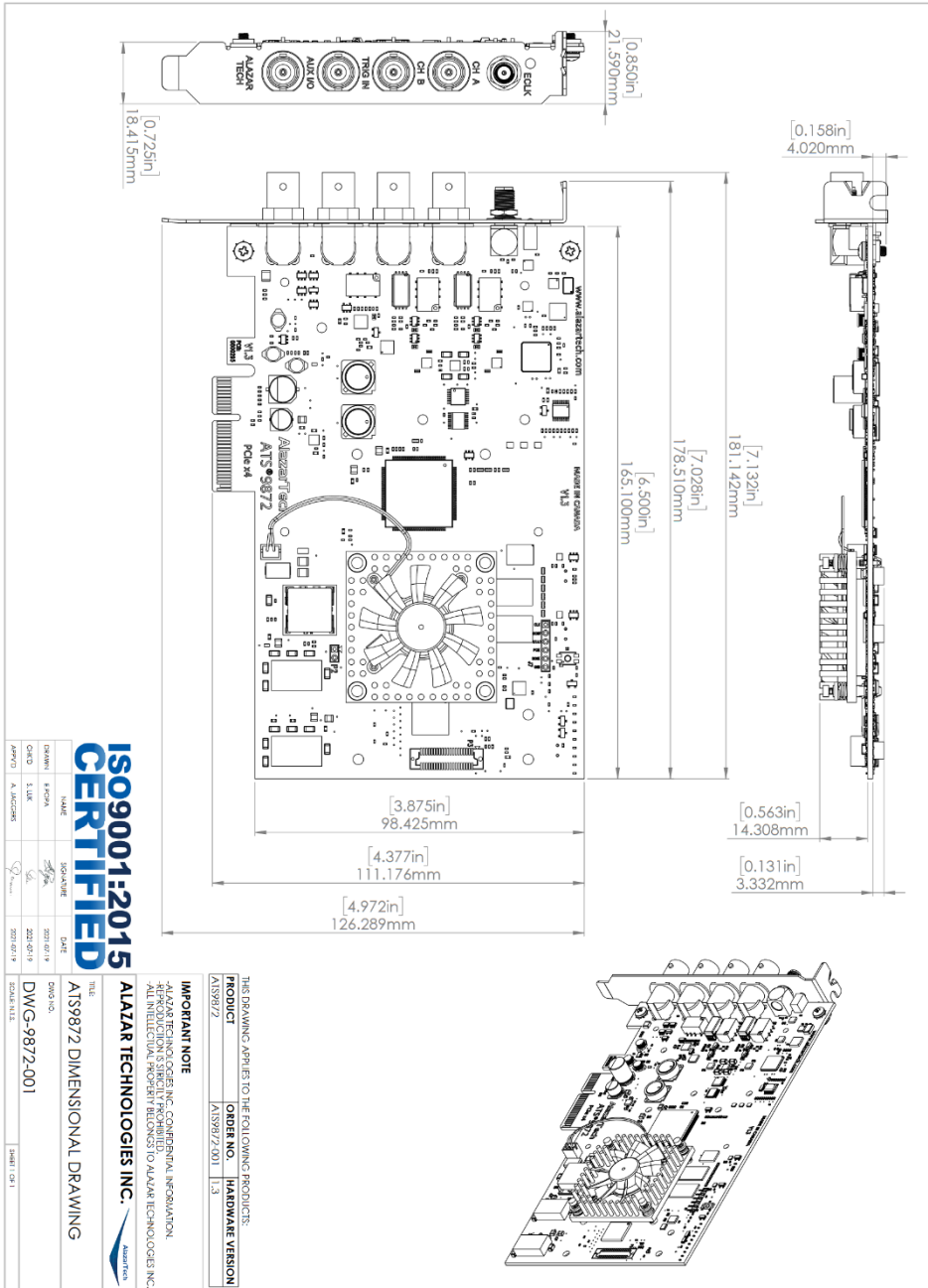


Figure 2 - ATS9872 Mechanical Drawing

Status LEDs

ATS9872 has 11 Status LEDs. Descriptions are provided below in the order in which they appear, from left to right.

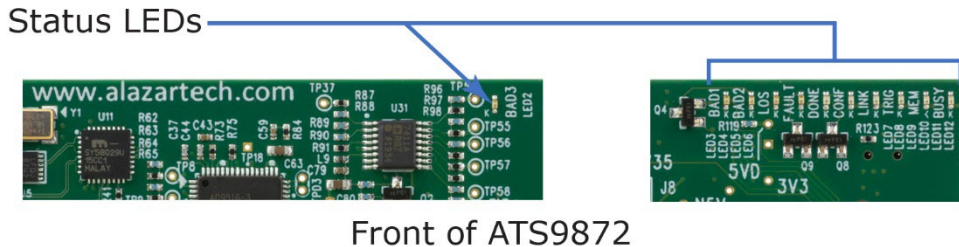


Figure 3 - ATS9872 Status LEDs

- **BAD3 (LED2):** Power Monitor error output from the board. This LED being red indicates that there is an overheating or power supply issue. More details are available in the Power Monitor plug-in of AlazarDSO (for Windows) and Alazar Front Panel (for Linux). Refer to [Figure 4 - Flowchart for Power Monitor Status LEDs](#) for steps to follow if this LED is red.
- **BAD1 (LED3):** Power Monitor error output from the board. This LED being red indicates that there is an overheating or power supply issue. More details are available in the Power Monitor plug-in of AlazarDSO (for Windows) and Alazar Front Panel (for Linux). Refer to [Figure 4 - Flowchart for Power Monitor Status LEDs](#) for steps to follow if this LED is red.
- **BAD2 (LED4):** Power Monitor error output from the board. This LED being red indicates that there is an overheating or power supply issue. More details are available in the Power Monitor plug-in of AlazarDSO (for Windows) and Alazar Front Panel (for Linux). Refer to [Figure 4 - Flowchart for Power Monitor Status LEDs](#) for steps to follow if this LED is red.
- **LOS (LED5):** This LED being on indicates a loss of signal; that the crystal oscillator used to generate base clocks is not working. This LED should always be off. If this LED is on, this means that the clock chip is not working normally.

- **FAULT (LED6):** This LED will turn red if a problem was encountered during FPGA power sequence. In this case, the FPGA will not wake up successfully.
- **DONE (LED7):** Reserved
- **CONF (LED8):** This LED being on indicates that the FPGA was configured successfully. This LED will turn on within 100 milliseconds of the computer power supply becoming stable and should remain on as long as the computer power is on. If this LED is off, it indicates either: a problem in one of the FPGA's power supply circuit; or the on-board flash memory that contains the FPGA configuration data has been corrupted.
- **LINK (LED9):** This LED being on indicates that a PCIe link has been negotiated between the board and the motherboard. The exact time at which this LED turns on is dependent on the motherboard and its BIOS. Typically, this LED will turn on a few seconds after the FPGA is configured. If the FPGA or CONF LED is on but LINK LED does not turn on, it indicates either: the motherboard slot is not enabled by the CPU or the BIOS; or there is a problem in the transceiver power supplies; or one or more of the transceiver coupling capacitors along the gold-fingers on the secondary side have been damaged.
- **TRIG (LED10):** This LED being on indicates that the board has received a trigger and is capturing post-trigger data. If the board is being triggered repeatedly, this LED will blink, or, if the trigger rate is very high, may even appear as a dimly lit LED.
- **MEM (LED11):** This LED indicates that on-board memory is detected by the board. When the software driver is loaded at the start of an application, it forces a full memory test. If the test is completed successfully, this LED is turned on, otherwise it remains off. If this LED is off, there is a hardware problem with the ATS9872.
- **BUSY (LED12):** This LED being on indicates that the board has been armed for capture. If the board is being armed repeatedly, this LED will blink or, if the re-arm rate is very high, may even appear as a dimly lit LED.

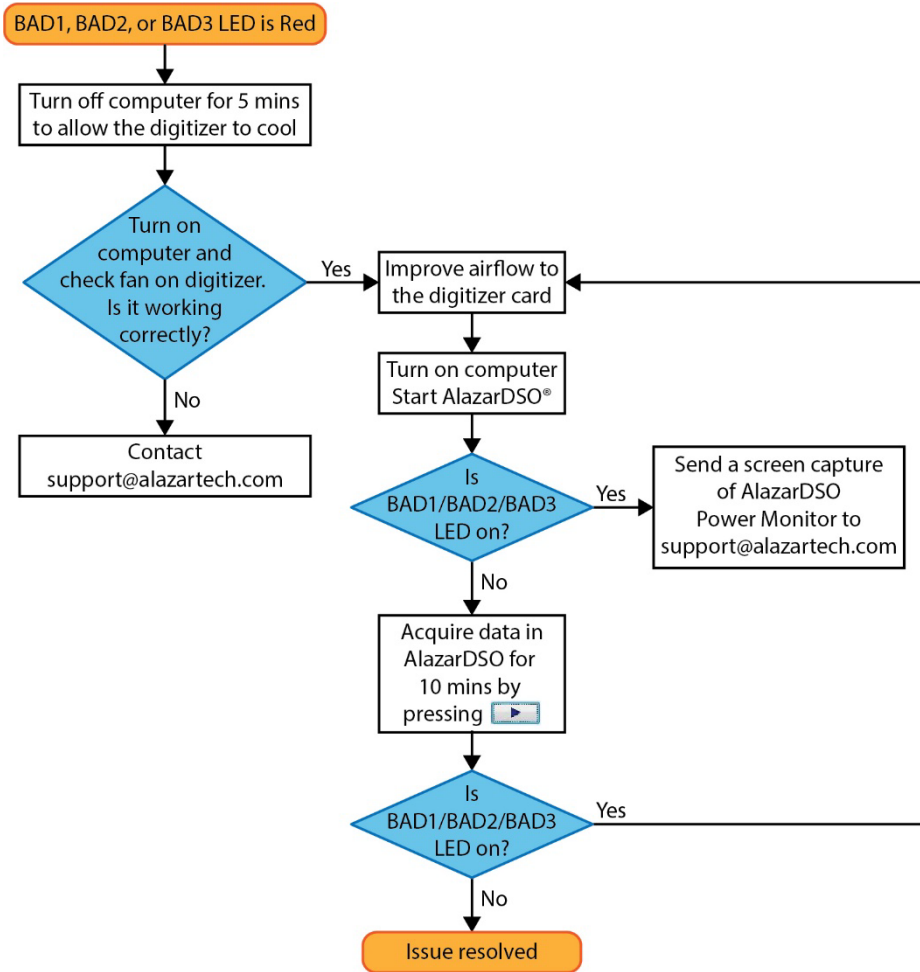


Figure 4 - Flowchart for Power Monitor Status LEDs

Consult this FAQ for instructions on accessing Power Monitor in AlazarDSO:
<https://www.alazartech.com/en/support/faq/?faq=1045>

Note: for Power Monitor error outputs, the Status LED remains on even after the issue is resolved. To turn off the Status LED, you must press the “Clear Int.” button in the AlazarDSO Power Monitor plug-in or restart the computer.

Signal Connections

You can use CH A and CH B to digitize data as well as to trigger an acquisition.

Use the TRIG IN input for an external analog trigger only; data on the TRIG channel cannot be digitized.

Use the ECLK input for clocking the ATS9872 in applications that require a 10 MHz Reference clock. Signal levels are specified in detail in [Appendix A - Specifications](#). Consult the chapter [External \(10 MHz Reference\) Clock](#) for details on 10 MHz Reference clock.

AUX I/O connector can be used as the following I/Os:

Outputs:

- Trigger Output
- Pacer (programmable clock) Output
- Software-controlled Digital Output

Inputs:

- Trigger Enable Input
- Software-readable Digital Input

Analog Input

The two analog input channels are referenced to common ground in bipolar mode. These settings are fixed; therefore, neither the reference nor the polarity of input channels can be changed. You cannot use CH A or CH B to make differential measurements or measure floating signals unless you subtract the digital waveforms in software.

For accurate measurements, make sure the signal being measured is referenced to the same ground as your ATS9872 by attaching the cable's ground shield to the signal ground.

The External Trigger input (labeled TRIG IN) either has a fixed input range of ± 3 V with 50Ω input impedance or can be configured as a TTL input with $6.3 \text{ k}\Omega$ $\pm 10\%$ input impedance.

The CH A and CH B inputs have a software-programmable coupling selection between AC and DC. Use AC coupling when your AC signal contains a large DC component. Without AC coupling, it is difficult to view details of the AC component with a large DC offset and a small AC component, such as switching noise on a DC supply. If you enable AC coupling, you remove the large DC offset for the input amplifier and amplify only the AC component. This technique makes effective use of dynamic range to digitize the signal of interest.

The *low-frequency corner* in an AC-coupled circuit is the frequency below which signals are attenuated by at least 3 dB. The low-frequency corner is approximately 100 kHz with 50Ω input impedance.

Differences between ATS9872 and ATS9870

The ATS9872 and ATS9870 function very similarly. The main differences between the ATS9872 and ATS9870 are:

- PCIe interface: ATS9872 has a 1.6 GB/s 4-lane PCI Express Gen 2 interface whereas the ATS9870 has a 1.6 GB/s 8-lane PCI Express Gen 1 interface.
- Full-scale input range: The ATS9870 has an additional full-scale input range of ± 40 mV.
- External clock: External 10 MHz Reference PLL comes standard on ATS9872; External clock is an optional upgrade on ATS9870, but it supports Fast External Clock, Slow External Clock, as well as 10 MHz Reference PLL.
- ATS9872 does not support multi-board Leader/Follower systems, however, it is possible to synchronize multiple ATS9872 digitizers by using *ATS9872: Sync 4X1G* to provide common clock and trigger signals to each digitizer.

Pipelined Analog-to-Digital Converters (ADC)

The ATS9872 uses 8-bit pipelined flash ADCs with a maximum conversion rate of 1 GS/s.

If you use a 10 MHz Reference clock, you must follow all the timing specifications on the external clock as described in *Appendix A - Specifications*.

Multiple Record Acquisition

The ATS9872 allows the capture of multiple records into the on-board memory. This allows you to capture rapidly occurring triggers in OCT, ultrasound or radar applications.

Note that ATS9872 allows you to acquire pre-trigger data.

Specifying Record Length

Record Length is specified in number of sample points. It must be a minimum of 256 points and can be specified with a 64-point resolution.

Specifying Pre-trigger Depth

You can acquire pre-trigger data in Traditional mode. The maximum pre-trigger amount is given by:

$(\text{Record Length} - 128) > 128$ points.

You can also acquire pre-trigger data in NPT mode with a resolution of 64 points.

From 0 to 4080 for single channel.

From 0 to 2040 for dual channel.

Specifying Record Count

User can specify the number of records that must be captured into host PC memory. The minimum value must be 1.

There is no upper limit on how many records you can capture in one acquisition.

External (10 MHz Reference) Clock

ATS9872 PCI Express Digitizer allows you to supply the ADC clock. This option is extremely important in many RF applications in which phase measurements must be made between the inputs themselves or between the inputs themselves or between the inputs and an external event.

Driving high-performance ADCs must be done carefully, as any injection of phase jitter through ADC clocks will result in a reduction in data conversion quality.

External clock input impedance is fixed at 50 Ω .

External clock input is always AC-coupled.

10 MHz Clock Reference

ATS9872 allows the user to synchronize the sampling clock to an external 10 MHz reference signal. This is useful in many RF applications.

Reference clock frequency must be 10 MHz \pm 0.1 MHz. Signal levels, specified in detail in [Appendix A - Specifications](#), must be respected.

In 10 MHz PLL external clock mode, the ATS9872 generates a 1 GHz clock frequency. Lower sample rates can be achieved using decimation.

Calibration

Calibration is the process of minimizing measurement errors by making small circuit adjustments.

All ATS9872 digitizers come factory calibrated to the levels indicated in [Appendix A - Specifications](#). Note that AlazarTech calibration is fully NIST- or CNRC-traceable.

However, your digitizer needs to be periodically recalibrated in order to maintain its specified accuracy. This calibration due date is listed on the CALIBRATION sticker affixed to your ATS9872 digitizer.

For verification and recalibration your AT9872 must be shipped back to the AlazarTech factory.

Optional Accessories: ATS9872: Sync 4X1G

ATS9872: Sync 4X1G

ATS9872: Sync 4X1G is a device that allows simultaneous sampling across multiple independent ATS9872 waveform digitizers. This is achieved by providing common clock and trigger signals to each digitizer.

Sync 4X1G supports Trigger Enable and Trigger Disable so that users can delay triggering until all digitizers are armed; this is a distinct advantage over passive signal splitters.

ATS Sync 4X1G comes with a software library that allows user software to control it.

Sync 4X1G interfaces to AlazarTech digitizer cards using a proprietary high-frequency cable (ATS Sync 4X1G: GRF1-SMA/BNC). The provided cable terminates in a ganged micro-miniature RF connector, which is used to connect to the Sync 4X1G.



The other end of the cable terminates in male SMA and BNC connectors, which are used to connect to the digitizer External Clock and External Trigger respectively.

Sync 4X1G connects to the host computer using a provided USB cable.

Sync 4X1G requires a power supply ([sold separately](#)).

Please refer to the [ATS Sync 4X1G datasheet](#) for full specifications.

ATS Sync 4X1G: GRF1-SMA/BNC Cable

Additional proprietary high-frequency cable to connect *ATS9872: Sync 4X1G* to *ATS9872* digitizers. One cable is provided with *ATS9872: Sync 4X1G*. Cable terminates in male SMA and BNC connectors, which are used to connect to the digitizer External Clock and External Trigger respectively.



ATS Sync xX1G: AC Wall Adapter

ATS Sync 4X1G is a self-powered USB 2.0 device; it does not draw any power from the USB cable. Users must supply the necessary power to the Sync 4X1G for it to operate.

The power supply must be ordered separately (order# SYNC-X1G-PWR). Customers may opt to order the CUI Inc. SMI18-5-V-P5 (International blades), or SWI18-5-N-P5 (Type A), or the Pihong USA PSC15A-050 (Type A) power supply directly from their preferred electronic component supplier such as Digi-Key or Mouser.

The power supplies specified above have undergone testing at our factory and are recommended power supplies for the Sync 4X1G.



Please note that power supplies purchased from AlazarTech will come with a type A (NEMA 1-15P) plug. Customers who require a different plug type should purchase a CUI Inc. SMI18-5-V-P5 or source a suitable power supply from their preferred electronic component supplier based on the following specifications:

Output	+5 Vdc, 3 Amps (15 W)
Output connector type	Barrel, Male plug
Inner pin	2.1 mm diameter
Outer barrel	5.5 mm diameter
Pin length	9.5 mm
Polarity	Center pin POSITIVE

Tested AC wall adapters CUI Inc. SMI18-5-V-P5 (International blades)
 CUI Inc. SWI18-5-N-P5 (NEMA 1-15P)
 Pihong USA PSC15A-050 (NEMA 1-15P)

Optional Extended Warranty

The purchase of an ATS9872, like all AlazarTech digitizers, includes a standard one (1) year parts and labor warranty. Customers receive free technical support on hardware products that are under warranty.

AlazarTech hardware parts and labor warranty should be maintained to ensure uninterrupted access to technical support and warranty repair services.

If a waveform digitizer is out of warranty, the user will not be eligible for free technical support on AlazarTech hardware or software products, and they will need to purchase technical support hours (order number SUPPORT-HR5) to obtain assistance.

In addition, any necessary repairs to out-of-warranty hardware products will carry a minimum bench charge.

Customers may extend their warranty by ordering an Extended Warranty (order number ATS9872-061).

This should be purchased before expiration of the standard warranty (or before expiration of an Extended Warranty).

If the warranty lapses¹, renewal at a later date will be subject to a reinstatement fee, to cover the administrative costs of warranty reinstatement, and a 6-month waiting period for repair claims. Furthermore, warranty must be extended at least 6 months past the current date.

Users can purchase up to 4 (four) additional years of warranty extensions for a maximum total of 5 years of warranty.

Get your warranty end date by registering your product at:

www.alazartech.com/en/my-account/my-products/.

Note:

¹ If the warranty lapses, the customer will have to prove that the digitizer is working before they can reinstate their warranty. Steps for this are detailed in the following FAQ: <https://www.alazartech.com/en/support/faq/?faq=1078>.

Chapter 4

Specific Features

This section contains information about features specific to AlazarTech digitizers and ATS9872 in particular.

Streaming Data Across the Bus

One of the most unique features of the ATS9872 is its on-board, dual-port acquisition memory, with custom Direct Memory Access (DMA), that can be used for signal storage.

Data is acquired into the on-board memory before being transferred to the host PCT memory. This transfer is performed using custom DMA, which uses scatter-gather bus mastering technology. This on-board dual-port memory allows loss-less data transfer even if the computer is temporarily interrupted by other tasks. This combined by the advanced, fully asynchronous software driver allows data transfer to host PC memory without any appreciable “in-process” software involvement.

These features are particularly useful for applications that require:

a) Continuous, gapless data capture. Also known as “Data Streaming” to PC host memory or hard disk

or

b) Data capture from rapidly occurring triggers, also known as Pulse Repeat Frequency Captures or PRF Captures.

In order to understand these sophisticated features, let us first review some of the issues involved in transferring data under Windows or Linux operating systems.

The Effects of the Operating System

Windows and Linux are not real-time operating systems, i.e. the operating system cannot guarantee a deterministic response time to an event, such as an interrupt or a software-generated event.

This means that if software has to play any appreciable part in data transfer, then the data throughput cannot be guaranteed, as the operating system will have the last say as to when the data collection application will get the CPU cycles to execute the necessary commands.

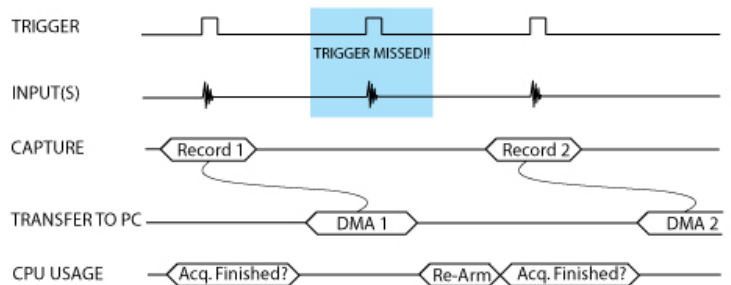
Note that the above is true even if the digitizer claims to use Direct Memory Access (DMA) to do the actual transfer but uses software commands to re-arm the digitizer. It is the re-arm command that will determine the overall data throughput.

Dual Port Memory

The basic throughput problem faced by digitizers is that almost all of them use single-port memory, i.e. if you are reading data from the acquisition memory, you cannot capture into it and vice-versa.

This requires a software handshake which is heavily dependent on the operating system response time.

TRIGGERED DATA ACQUISITION USING SINGLE-PORT MEMORY

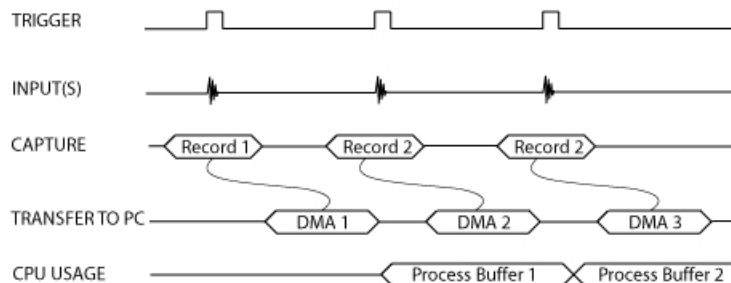


NOTE 1: Some Trigger events may be missed while data is being off-loaded from on-board memory

NOTE 2: Virtually all CPU cycles are used up in managing data acquisition. Very little left for for data processing

ATS9872 solves this problem by providing dual-port memory that can act as a very deep FIFO and an advanced custom-DMA engine that can stream data to PC host memory at up to 1.6 GB/s (exact rate is motherboard dependent).

TRIGGERED DATA ACQUISITION USING DUAL-PORT MEMORY



NOTE 1: No Trigger Events Are Missed - Guaranteed

NOTE 2: Over 95% of CPU cycles are available for data processing

Bottom line is that software does not have to wait until the end of data capture to read the acquired data.

AutoDMA

Just having dual-ported memory on its own does not solve the problem of capturing rapidly occurring triggers or streaming applications. Software still has to get involved in re-arming the hardware after every capture and again for reading the data from on-board acquisition memory.

ATS9872's proprietary AutoDMA circuitry allows the acquisition system to be re-armed by a hardware command and data transfer to be initiated by the hardware itself, thus removing virtually all "in-process" software involvement.

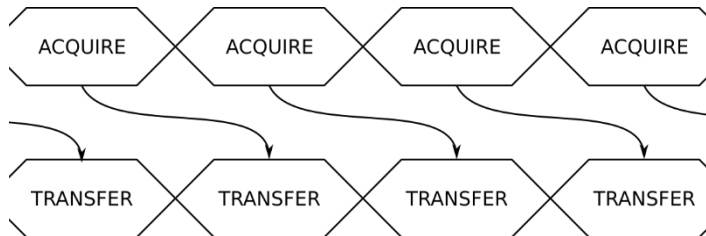


Figure 5 - AutoDMA acquisition and transfer cycle

Of course, software still has to set up the DMA when one of the buffers fills up, but, thanks to the dual-DMA engine and fully asynchronous driver that uses overlapped IO, these tasks can be paralleled.

In other words, when software is re-arming DMA channel 0, DMA channel 1 is already transferring data to host memory.

Note that if data throughput is too high, a `DMA_OVERFLOW` flag gets set and is available to the programmer.

Consumption of the captured data is, of course, under the control of user-created software, and it is this that will determine the maximum PRF instead of the bus throughput.

The important thing to note is that if asynchronous DMA is used, CPU usage is no more than 5%, even if a 1.6 GB/s DMA is going on.

Traditional AutoDMA

In order to acquire both pre-trigger and post-trigger data in a dual-ported memory environment, users can use Traditional AutoDMA.

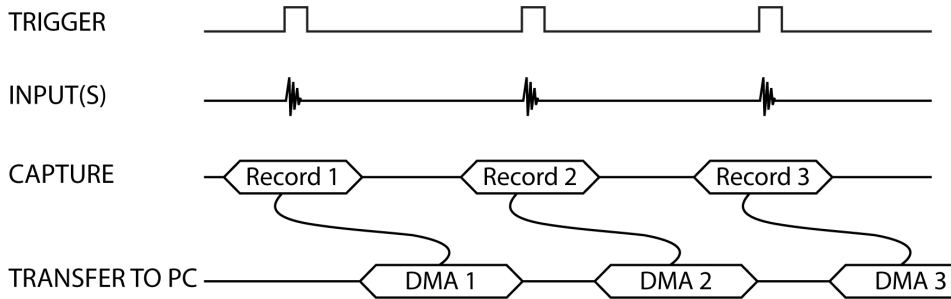


Figure 6 - Traditional AutoDMA Transfers

Data is returned to the user in buffers, where each buffer can contain from 1 to 8192 records (triggers). This number is called RecordsPerBuffer.

While Traditional AutoDMA can acquire data to PC host memory at the maximum sustained transfer rate of the motherboard, a BUFFER_OVERFLOW can occur if more than 512 triggers occur in very rapid succession, even if all the on-board memory has not been used up.

ATS9872 features a high-performance memory management firmware that allows much faster data throughput in Traditional mode than previous generation digitizers.

Traditional AutoDMA is the fastest way to move data into user buffers. It is the recommended method for new designs such as the ATS9872.

No Pre-Trigger (NPT) AutoDMA

Many ultrasonic scanning and medical imaging applications do not need any pre-trigger data; post-trigger data is sufficient.

NPT AutoDMA is designed specifically for these applications. By only storing post-trigger data, the memory bandwidth is optimized.

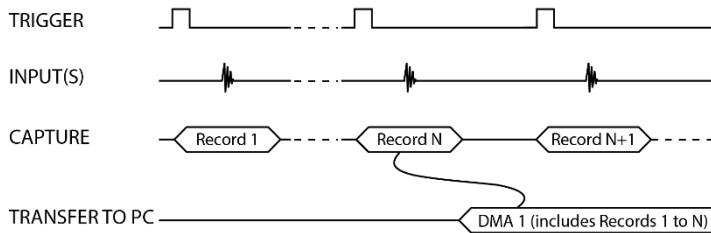


Figure 7 - AutoDMA NPT Transfers

NPT AutoDMA buffers do not include headers, so it is not possible to get trigger time-stamps.

More importantly, a `BUFFER_OVERFLOW` flag is asserted only if the entire on-board memory overflows, i.e. the amount of memory that has been written into but not read out to PCIe bus exceeds the on-board memory size.

NPT AutoDMA can easily acquire data to PC host memory at the maximum sustained transfer rate of the motherboard without causing an overflow.

This is the recommended mode of operation for most ultrasonic scanning, OCT and medical imaging applications.

Continuous AutoDMA

Continuous AutoDMA is also known as the data streaming mode.

In this mode, data starts streaming across the PCI bus as soon as the ATS9872 is armed for acquisition. It is important to note that triggering is disabled in this mode.

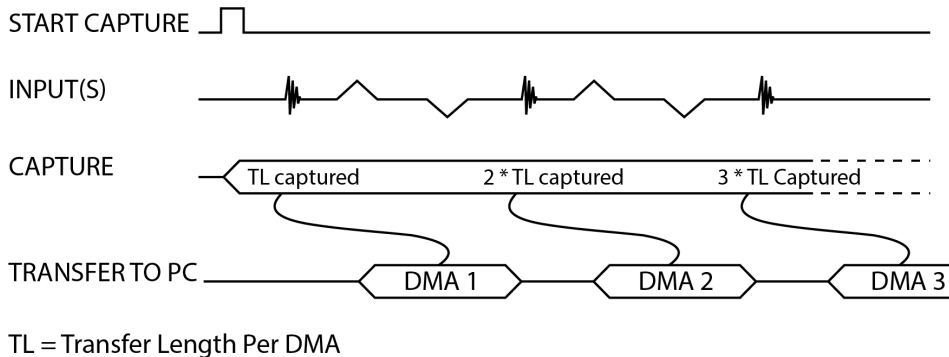


Figure 8 - Continuous AutoDMA Transfers

Continuous AutoDMA buffers do not include headers, so it is not possible to get trigger time-stamps.

A `BUFFER_OVERFLOW` flag is asserted only if the entire on-board memory is used up.

The amount of data to be captured is controlled by counting the number of buffers acquired. Acquisition is stopped by an `AbortCapture` command.

Continuous AutoDMA can easily acquire data to PC host memory at the maximum sustained transfer rate of the motherboard without causing an overflow.

This is the recommended mode for very long signal recording.

Triggered Streaming AutoDMA

Triggered Streaming AutoDMA is virtually the same as Continuous mode, except the data transfer across the bus is held off until a trigger event has been detected.

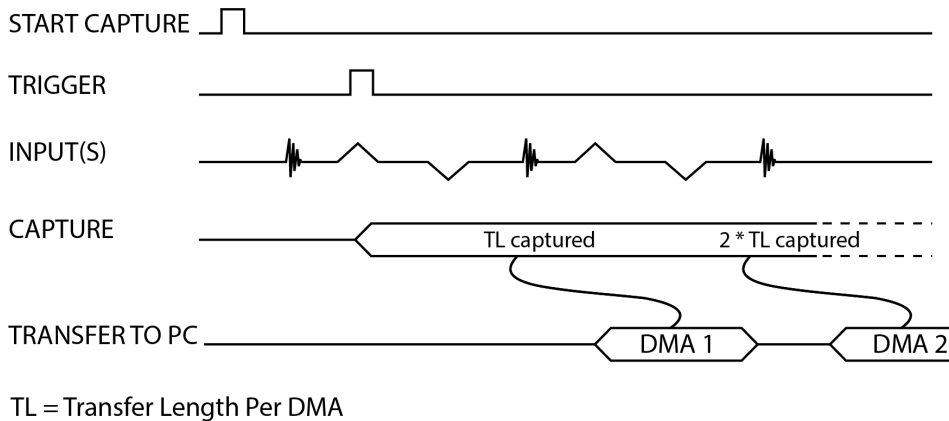


Figure 9 - Triggered Streaming AutoDMA Transfers

Triggered Streaming AutoDMA buffers do not include headers, so it is not possible to get trigger time-stamps.

A `BUFFER_OVERFLOW` flag is asserted only if the entire on-board memory is used up.

As in Continuous mode, the amount of data to be captured is controlled by counting the number of buffers acquired.

Acquisition is stopped by an `AbortCapture` command.

Triggered Streaming AutoDMA can easily acquire data to PC host memory at the maximum sustained transfer rate of the motherboard without causing an overflow.

This is the recommended mode for RF signal recording that has to be started at a specific time, e.g. based on a GPS pulse.

Output Data Format

By default, ATS9872 data comes out as unsigned binary, where code 0 represents the negative full scale, code (2^n-1) represents the positive full scale with zero being 2^{n-1} .

It is possible to change the data format to signed binary using an API call. In signed binary format, zero is represented by code 0, positive full scale is represented by $(2^{n-1}-1)$ and negative full scale is represented by (2^{n-1}) .

Real-Time Signal Processing

One of the unique features of AlazarTech’s waveform digitizer product line is that acquired data is available for real-time signal processing by the host CPU or GPU.

What makes this very powerful is the fact that most modern GPUs have hundreds of kernels, which can be used to do real-time signal processing using parallel processing principles.

If your algorithm can be written to take advantage of parallel processing, this may be a very cost-effective solution for signal processing applications.

AlazarTech designed the ATS-GPU-BASE software library to transfer data acquired by its family of PCI Express waveform digitizers to a CUDA-enabled GPU at very high sustained transfer rates. Data can be moved from AlazarTech digitizers to GPUs and from GPUs to user buffers at full PCIe bus speeds (1.6 GB/s for ATS9872).

Once the data is available in GPU memory, many types of digital signal processing (DSP) can be done on this data at near-hardware speeds.

Stream to Memory

AlazarDSO features a free 'Stream To Memory' module which allows its users to acquire data to computer RAM and to analyze it or save to disk later. This is very useful in cases where the acquisition data rate is higher than the disk writing speed, but the total acquisition size is less than the free RAM of the computer.

This module is accessed by clicking on **Tools >> Stream To Memory...**

Triggering

The ATS9872 is equipped with sophisticated digital triggering options, such as programmable trigger thresholds and slope on any of the input channels or the External Trigger input.

While most oscilloscopes offer only one trigger engine, ATS9872 offers two trigger engines (called Engines J and K).

The user can specify the number of records to capture in an acquisition, the length of each record and the amount of pre-trigger data.

A programmable trigger delay can also be set by the user. This is very useful for capturing the signal of interest in a pulse-echo application, such as ultrasound, radar, lidar etc.

Appendix A - Specifications

This appendix lists the specifications of the ATS9872. These specifications are typical at 25 °C unless otherwise stated. The operating temperature range is 0 to 55 °C.

Minimum Requirements

OS	Windows 11, Windows 10, Windows Server 2019, and Windows Server 2016 (64-bit only), or one of the Supported Linux Distributions (64-bit only)
RAM	16 GB
HDD	16 GB of free hard disk space if using AlazarDSO
PCIe	One free PCIe slot that is mechanically x4, x8, or x16 (must be Gen 2 or higher slot to achieve full data throughput)

Power Requirements

+12 V	1.2 A, typical
+3.3 V	1.1 A, typical

Physical

Size	Single slot, half-length PCIe card (4.377 inches x 6.5 inches excluding connectors protruding from the front panel)
Weight	250 g

I/O Connectors

ECLK	SMA female
CH A	BNC female
CH B	BNC female
TRIG IN	BNC female
AUX I/O	BNC female

Environmental

Operating temperature	0 to 55 °C, ambient
Storage temperature	-20 to 70 °C
Relative humidity	5 to 95%, non-condensing

Acquisition System

Resolution	8 bits
Bandwidth (-3 dB)	
DC-coupled, 50 Ω	DC - 450 MHz
AC-coupled, 50 Ω	100 kHz - 450 MHz
Number of channels	2, simultaneously sampled
Maximum sample rate	1 GS/s
Minimum sample rate	1 KS/s (internal clock)
Full scale input ranges	
50 Ω impedance:	± 100 mV, ± 200 mV, ± 400 mV, ± 1 V, ± 2 V and ± 4 V, software selectable
DC accuracy	$\pm 2\%$ of full scale in all input ranges
Input coupling	AC or DC, software selectable
Input impedance	50 Ω $\pm 1\%$
Absolute maximum input	
50 Ω	± 4 V (DC + peak AC for CH A, and CH B only without external attenuation)

Acquisition Memory System

Memory size	512 Million samples per channel
Record length	Software selectable with 64-point resolution. Record length must be a minimum of 256 points. There is no upper limit on the maximum record length in data streaming mode.
Number of records	Software selectable from a minimum of 1 to a maximum of infinite number of records
Pre-trigger depth	From 0 to 4080 for single channel From 0 to 2040 for dual channel
Post-trigger depth	Record Length – Pre-Trigger Depth

Timebase System

Timebase options	Internal Clock or External 10 MHz Reference
Internal sample rates	1 GS/s, 500 MS/s, 250 MS/s, 100 MS/s, 50 MS/s, 20 MS/s, 10 MS/s, 5 MS/s, 2 MS/s, 1 MS/s, 500 KS/s, 200 KS/s, 100KS/s, 50 KS/s, 20KS/s, 10KS/s, 5 KS/s, 2 KS/s, 1 KS/s
Internal clock accuracy	±2 ppm

Dynamic Parameters

Typical values measured using a randomly selected ATS9872. Input was provided by a Rohde & Schwarz (SMB 100A) signal generator, followed by a 9-pole, 20 MHz band-pass filter (TTE Q36T-20M-2M-50-720BMF). Input frequency was set at 20 MHz and output amplitude was 796 mV_{p-p}, which was approximately 99% of the full scale input. Input range was set to 400 mV. Input was not averaged and bandwidth limiting filter was disabled.

SNR	46.34 dB
SINAD	44.44 dB
THD	-48.95 dB
SFDR	51.44 dB

Note that these dynamic parameters may vary from one unit to another, with input frequency and with the full-scale input range selected.

10 MHz Reference PLL Input

Signal level	500 mV _{p-p}
Input impedance	50 Ω
Input coupling	AC coupled
Input frequency	10 MHz ± 0.1 MHz
Maximum frequency	10.1 MHz
Minimum frequency	9.9 MHz
Sampling clock freq.	1 GHz

Triggering System

Mode	Edge triggering with fixed hysteresis
Comparator type	Digital comparators for internal (CH A, CH B) triggering and analog comparators for TRIG IN (External) triggering
Trigger engines	2
Trigger engine combination	Engine J, engine K, J OR K, software selectable
Trigger engine source	CH A, CH B, TRIG IN, Software or None, independently software-selectable for each of the two Trigger Engines
Hysteresis	$\pm 5\%$ of full-scale input, typical
Trigger sensitivity	$\pm 10\%$ of full scale input range. This implies that the trigger system may not trigger reliably if the input has an amplitude less than $\pm 10\%$ of full-scale input range selected
Trigger level accuracy	$\pm 5\%$, typical, of full-scale input range of the selected trigger source
Bandwidth	450 MHz
Trigger Delay	Software-selectable from 0 to 9,999,999 sampling clock cycles
Trigger Timeout	Software-selectable with a 10 μ s resolution. Maximum settable value is 3,600 seconds. Can also be disabled to wait indefinitely for a trigger event

TRIG IN (External Trigger) Input

Input type	Analog or 3.3 V TTL, software-selectable
Input coupling	DC only
Analog input impedance	50 Ω
Analog bandwidth (-3 dB)	DC - 250 MHz
Analog input range	± 3 V
Analog DC accuracy	$\pm 10\%$ of full-scale input
Analog absolute max. input	± 8 V (DC + peak AC without external attenuation)
TTL input impedance	6.3 k Ω $\pm 10\%$
TTL min. pulse width	32 ADC sampling clocks
TTL min. pulse amplitude	2 V
TTL absolute max. input	-0.7 V to +5.5 V

Auxiliary I/O (AUX I/O)

Signal Direction	Input or Output, software-selectable. Trigger Output by default
Output Types:	Trigger Output Pacer (programmable clock) Output Software-controlled Digital Output
Input Types:	Trigger Enable Software-readable Digital Input
Output	
Amplitude:	5 Volt TTL
Synchronization:	Synchronized to a clock derived from the ADC sampling clock. Divide-by-8 clock (dual channel mode) or divide-by-16 clock (single channel mode)
Input	
Amplitude:	3.3 Volt TTL (5 Volt-compliant)
Input coupling	DC

Certification and Compliances

RoHS 3 (Directive 2015/863/EU) Compliance
 REACH Compliance
 CE Marking — EC Conformity
 FCC Part 15 Class A / ICES-003 Class A Compliance

Materials Supplied

One ATS9872 PCI Express Card
 One ATS9872 Install Disk on USB flash drive

Supported Linux Distributions

AlazarTech offers ATS9872 DKMS drivers for the following Linux distributions: Ubuntu, Debian, and RHEL. AlazarTech DKMS drivers may work for other Linux distributions, but they have not been tested and technical support may be limited.

Users can download the DKMS driver for their specific distribution by choosing from the available drivers here:

<https://www.alazartech.com/en/linux-drivers/ats9872/622/>

All specifications are subject to change without notice.

Appendix B - Benchmarks

This appendix lists the data throughput measured by our technicians on various computers and motherboards under different operating systems.

Given the constantly changing nature of computers, these benchmarks are provided as a reference only and AlazarTech assumes no liability in case the computer you purchase behaves differently than what was observed in AlazarTech's laboratory.

Model	Chipset	CPU	Throughput
HP Z4 G4 workstation	Intel X299	Intel® Core™ i7-7820X CPU @ 3.60GHz, 3600 MHz	1.63 GB/s
ASUS ProArt Z690- CREATOR	Intel Z690	Intel® Core™ i9-12900K CPU @ 3.20GHz	1.7 GB/s
Supermicro X11DPG-QT	Intel C621	Intel Xeon (S) Silver 4114T CPU @ 2.20 GHz	1.7 GB/s

Table 1 - Windows Bus Throughput Benchmark

Note: To ensure optimum performance, you should always make sure to use the latest BIOS. Most motherboard-related issues we see are fixed with a BIOS update.

[List of AlazarTech Recommended Motherboards & PCs.](#)



ALAZAR TECHNOLOGIES INC.

6600 Trans-Canada Highway

Suite 310

Pointe-Claire, QC

CANADA H9R 4S2

Tel: (514) 426-4899

Fax: (514) 426-2723

E-mail: sales@alazartech.com

Web: www.alazartech.com