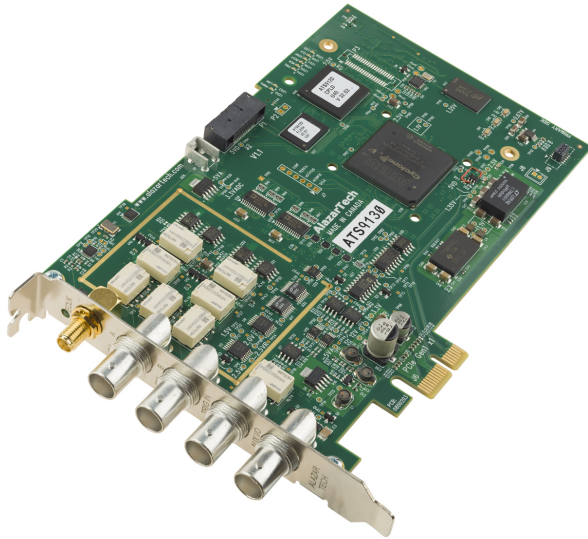




AlazarTech

ATS9130 User Manual

12 Bit, 2 Channel, 50 MS/s
Waveform Digitizer for PCI Express Bus



Written for Hardware Version 1.1
July 2019 Edition

Alazar Technologies Inc. Contact Information

AlazarTech, Inc.

6600 Trans-Canada Highway

Suite 310

Pointe-Claire, QC

Canada H9R 4S2

Telephone: (514) 426-4899

Fax: (514) 426-2723

E-mail: sales@alazartech.com

Web site: www.alazartech.com

To comment on the documentation for ATS9130, send e-mail to support@alazartech.com.

Information required when contacting AlazarTech for technical support:

Owned by: _____

Serial Number: _____

Purchase Date: _____

Purchased From: _____

Software Driver Version: _____

SDK Version: _____

ATS-GPU Version: _____

AlazarDSO Version: _____

Operating System: _____

Important Information

Warranty

The ATS9130 is warranted against defects in materials and workmanship for a period of one year from the date of shipment, as evidenced by receipts or other documentation. Alazar Technologies Inc. (hereafter “AlazarTech”) will, at its option, repair or replace equipment that proves to be defective during the warranty period. This warranty includes parts and labor.

The media on which you receive AlazarTech software are warranted not to fail to execute programming instructions, due to defects in materials and workmanship, for a period of 90 days from date of shipment, as evidenced by receipts or other documentation. AlazarTech will, at its option, repair or replace software media that do not execute programming instructions if AlazarTech receives notice of such defects during the warranty period. AlazarTech does not warrant that the operation of the software shall be uninterrupted or error free.

A Return Material Authorization (RMA) number must be obtained from the factory and clearly marked on the outside of the package before any equipment will be accepted for warranty work. AlazarTech will pay the shipping costs of returning to the owner parts that are covered by warranty.

AlazarTech believes that the information in this document is accurate. The document has been carefully reviewed for technical accuracy. In the event that technical or typographical errors exist, AlazarTech reserves the right to make changes to subsequent editions of this document without prior notice to holders of this edition. AlazarTech may also make improvements and/or changes in the products and/or programs described in this document at any time. The reader should consult AlazarTech if errors are suspected. In no event shall AlazarTech be liable for any damages arising out of or related to this document or the information contained in it. The latest user manual can be found on the AlazarTech web page at www.alazartech.com/support/downloads.htm.

EXCEPT AS SPECIFIED HEREIN, ALAZARTECH MAKES NO WARRANTIES, EXPRESS OR IMPLIED, AND SPECIFICALLY DISCLAIMS ANY WARRANTY OF MERCHANTABILITY OR FITNESS FOR A PARTICULAR PURPOSE. CUSTOMER'S RIGHT TO RECOVER DAMAGES CAUSED BY FAULT OR NEGLIGENCE ON THE PART OF ALAZARTECH SHALL BE LIMITED TO THE AMOUNT THEREFORE PAID BY THE CUSTOMER. ALAZARTECH WILL NOT BE LIABLE FOR DAMAGES RESULTING FROM LOSS OF DATA, PROFITS, USE OF PRODUCTS, OR INCIDENTAL OR CONSEQUENTIAL DAMAGES, EVEN IF ADVISED OF THE POSSIBILITY THEREOF. This limitation of the liability of AlazarTech will apply regardless of the form of action, whether in contract or tort, including negligence. Any action against AlazarTech must be brought within one year after the cause of action accrues. AlazarTech shall not be liable for any delay in performance due to causes beyond its reasonable control. The warranty provided herein does not cover damages, defects, malfunctions, or service failures caused by owner's failure to follow the AlazarTech installation, operation, or maintenance instructions; owner's modification of the product; owner's abuse, misuse, or negligent acts; and power failure or surges, fire, flood, accident, actions of third parties, or other events outside reasonable control.

Copyright

Under the copyright laws, this publication may not be reproduced or transmitted in any form, electronic or mechanical, including photocopying, recording, storing in an information retrieval system, or translating, in whole or in part, without the prior written consent of AlazarTech, Inc.

Registered Trademarks

AlazarTech®, AlazarTech ATS®, AlazarDSO®, AlazarStream®, and AlazarPC® are registered trademarks of AlazarTech, Inc. MATLAB is a trademark and/or registered trademark of The MathWorks, Inc. LabVIEW is a trademark and/or registered trademark of National Instruments. Windows is a trademark and/or registered trademark of Microsoft Corporation in the U.S. and/or other countries. Linux is a registered trademark of Linus Torvalds. CUDA is a trademark and/or registered trademark of NVIDIA Corporation in the U.S. and/or other countries. Other product and company names mentioned herein are trademarks, registered trademarks, or trade names of their respective owners.

Warning Regarding Use of AlazarTech Products

1. ALAZARTECH PRODUCTS ARE NOT DESIGNED WITH COMPONENTS AND TESTING FOR A LEVEL OF RELIABILITY SUITABLE FOR USE IN OR IN CONNECTION WITH SURGICAL IMPLANTS OR AS CRITICAL COMPONENTS IN ANY LIFE SUPPORT SYSTEMS WHOSE FAILURE TO PERFORM CAN REASONABLY BE EXPECTED TO CAUSE SIGNIFICANT INJURY TO A HUMAN.
2. IN ANY APPLICATION, INCLUDING THE ABOVE, RELIABILITY OF OPERATION OF THE SOFTWARE PRODUCTS CAN BE IMPAIRED BY ADVERSE FACTORS, INCLUDING BUT NOT LIMITED TO FLUCTUATIONS IN ELECTRICAL POWER SUPPLY, COMPUTER HARDWARE MALFUNCTIONS, COMPUTER OPERATING SYSTEM SOFTWARE FITNESS, FITNESS OF COMPILERS AND DEVELOPMENT SOFTWARE USED TO DEVELOP AN APPLICATION, INSTALLATION ERRORS, SOFTWARE AND HARDWARE COMPATIBILITY PROBLEMS, MALFUNCTIONS OR FAILURES OF ELECTRONIC MONITORING OR CONTROL DEVICES, TRANSIENT FAILURES OF ELECTRONIC SYSTEMS (HARDWARE AND/OR SOFTWARE), UNANTICIPATED USES OR MISUSES, OR ERRORS ON THE PART OF THE USER OR APPLICATIONS DESIGNER (ADVERSE FACTORS SUCH AS THESE ARE HEREAFTER COLLECTIVELY TERMED "SYSTEM FAILURES"). ANY APPLICATION WHERE A SYSTEM FAILURE WOULD CREATE A RISK OF HARM TO PROPERTY OR PERSONS (INCLUDING THE RISK OF BODILY INJURY AND DEATH) SHOULD NOT BE RELIANT SOLELY UPON ONE FORM OF ELECTRONIC SYSTEM DUE TO THE RISK OF SYSTEM FAILURE. TO AVOID DAMAGE, INJURY, OR DEATH, THE USER OR APPLICATION DESIGNER MUST TAKE REASONABLY PRUDENT STEPS TO PROTECT AGAINST SYSTEM FAILURES, INCLUDING BUT NOT LIMITED TO BACK-UP OR SHUT DOWN MECHANISMS. BECAUSE EACH END-USER SYSTEM IS CUSTOMIZED AND DIFFERS FROM ALAZARTECH, INC.'S TESTING PLATFORMS AND BECAUSE A USER OR APPLICATION DESIGNER MAY USE ALAZARTECH PRODUCTS IN COMBINATION WITH OTHER PRODUCTS IN A MANNER NOT EVALUATED OR CONTEMPLATED BY ALAZARTECH, INC., THE USER OR APPLICATION DESIGNER IS ULTIMATELY RESPONSIBLE FOR VERIFYING AND VALIDATING THE SUITABILITY OF ALAZARTECH INC. PRODUCTS WHENEVER ALAZARTECH PRODUCTS ARE INCORPORATED IN A SYSTEM OR APPLICATION, INCLUDING, WITHOUT LIMITATION, THE APPROPRIATE DESIGN, PROCESS AND SAFETY LEVEL OF SUCH SYSTEM OR APPLICATION.

Compliance

FCC/Canadian Interference-Causing Equipment Standard (ICES-003) Compliance*

Determining FCC Class

The Federal Communications Commission (FCC) has rules to protect wireless communications from interference. The FCC places digital electronics into two classes. These classes are known as Class A (for use in industrial-commercial locations only) or Class B (for use in residential or commercial locations). Depending on where it is operated, this product could be subject to restrictions in the FCC rules. (In Canada, the department of Innovation, Science and Economic Development (ISED), regulates wireless interference in much the same way.)

Digital electronics emit weak signals during normal operation that can affect radio, television, or other wireless products. By examining the product you purchased, you can determine the FCC Class and therefore which of the two FCC/ISED Warnings apply in the following sections. (Some products may not be labeled at all for FCC; if so, the reader should then assume these are Class A devices.)

FCC Class A products only display a simple warning statement of one paragraph in length regarding interference and undesired operation. Most of our products are FCC Class A. The FCC rules have restrictions regarding the locations where FCC Class A products can be operated.

FCC Class B products display either a FCC ID code, starting with the letters **EXN**, or the FCC Class B compliance mark.

Consult the FCC website <http://www.fcc.gov> for more information.

FCC/ISED Warnings

This equipment generates and uses radio frequency energy and, if not installed and used in strict accordance with the instructions in this manual and the CE Mark Declaration of Conformity**, may cause interference to radio and television reception. Classification requirements are the same for the Federal Communications Commission (FCC) and Innovation, Science and Economic Development (ISED) Canada.

Changes or modifications not expressly approved by AlazarTech Inc. could void the user's authority to operate the equipment under the FCC/ISED Rules.

**Class A
Federal Communications Commission**

This equipment has been tested and found to comply with the limits for a Class A digital device, pursuant to part 15 of the FCC Rules. These limits are designed to provide reasonable protection against harmful interference when the equipment is operated in a commercial environment. This equipment generates, uses, and can radiate radio frequency energy and, if not installed and used in accordance with the instruction manual, may cause harmful interference to radio communications. Operation of this equipment in a residential area is likely to cause harmful interference in which case the user will be required to correct the interference at his own expense.

Innovation, Science and Economic Development Canada

This Class A digital apparatus meets all requirements of the Canadian Interference-Causing Equipment Standard (ICES-003).
Cet appareil numérique de la classe A respecte toutes les exigences du Règlement sur le matériel brouilleur du Canada.

Compliance to EU Directives

Readers in the European Union (EU) must refer to the Manufacturer's Declaration of Conformity (DoC) for information** pertaining to the CE Mark compliance scheme. The Manufacturer includes a DoC for most every hardware product except for those bought for OEMs, if also available from an original manufacturer that also markets in the EU, or where compliance is not required as for electrically benign apparatus or cables.

To obtain the DoC for this product, click **Declaration of Conformity** at www.alazartech.com/support/documents.htm. This web page lists all DoCs by product family. Select the appropriate product to download or read the DoC.

* Certain exemptions may apply in the USA, see FCC Rules §15.103 **Exempted devices**, and §15.105(c). Also available in sections of CFR 47.

** The CE Mark Declaration of Conformity will contain important supplementary information and instructions for the user or installer.

Environmental Compliance

Alazar Technologies Inc., hereby certifies that this product is RoHS compliant, as defined by Directive 2015/863/EU (RoHS 3) of the European Parliament and of the Council of 31 March 2015 on the restriction of the use of certain hazardous substances in electrical and electronic equipment. All manufacturing has been done using RoHS-compliant components and lead-free soldering.

Table of Contents

Important Information	ii
Compliance.....	v
Table of Contents	viii
Change Log.....	ix
CHAPTER 1 INTRODUCTION.....	1
About Your ATS9130	2
ATS9130 Export Control Classification.....	3
Acquiring Data with Your ATS9130	4
Optional Upgrades.....	7
CHAPTER 2 - INSTALLATION AND CONFIGURATION.....	8
What You Need to Get Started	9
Unpacking.....	10
Installing the ATS9130 in Windows.....	11
Installing the ATS9130 in a Linux System.....	19
Updating ATS9130 Driver	22
CHAPTER 3 HARDWARE OVERVIEW	23
Physical Overview.....	25
Status LEDs	27
Signal Connections	30
Analog Input	31
Calibration.....	33
Optional External Clock	34
CHAPTER 4 SPECIFIC FEATURES	36
Streaming Data Across the Bus	37
APPENDIX A - SPECIFICATIONS.....	43
APPENDIX B - BENCHMARKS.....	49

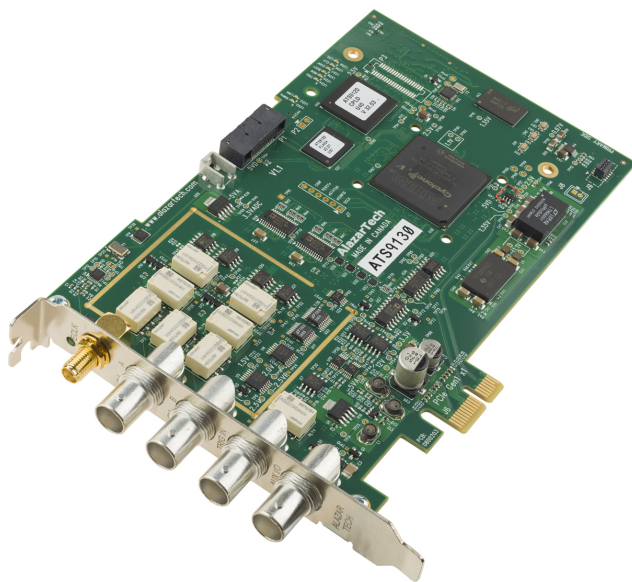
Change Log

This is the first edition of this manual

Chapter 1

Introduction

This chapter describes the ATS9130 and lists additional equipment.



About Your ATS9130

Thank you for your purchase of an ATS9130. This PCI Express (PCIe Gen1 x1) based waveform digitizer has the following features:

- Two 12-bit resolution analog input channels
- Half-length PCI Express (8 lane) card
- Real-time sampling rate of 50 MS/s to 1 KS/s with internal clock and 50 MS/s to 1 MS/s with external clock
- 25 MHz analog input bandwidth.
- 8 Million samples of on-board acquisition memory per channel
- Analog trigger channel with software-selectable level, slope, and hysteresis
- Software-selectable AC/DC coupling and 1 M Ω / 50 Ω input impedance
- Pre-trigger capture with Multiple Record capability. Limited pre-trigger capture.
- NIST- or CNRC-traceable calibration
- Custom DMA engine for best latency protection against Windows and Linux operating systems
- Fully asynchronous software driver for fastest DMA with least CPU overhead
- Streaming of acquired data to PC host memory at 200 MB/s

All ATS9130 digitizers follow industry-standard Plug and Play specifications on all platforms and offer seamless integration with compliant systems.

Detailed specifications of the ATS9130 digitizers are listed in Appendix A - Specifications.

ATS9130 Export Control Classification

According to the latest Export Control Handbook that came into effect on August 11, 2017, ATS9130 is currently not controlled for export from Canada. Its export control classification is N8, which is equivalent to ECCN EAR99. ATS9130 can be shipped freely outside of Canada, with the exception of countries listed on the [Area Control List](#) and [Sanctions List](#). Furthermore, if the end-use of ATS9130, in part or in its entirety, is related to the development or deployment of weapons of mass destruction, AlazarTech is obliged to apply for an export permit.

Acquiring Data with Your ATS9130

You can acquire data either programmatically by writing an application for your ATS9130 or interactively with the AlazarDSO software.

If you want to integrate the ATS9130 in your test and measurement or embedded OEM application, you can program the digitizer using C/C++, Python, MATLAB or LabVIEW for Windows or Linux operating systems.

- Windows operating systems supported are Windows 10, Windows 8, Windows 7, Windows Server 2013, Windows Server 2010, and Windows Server 2008 R2. Both 32 bit and 64 bit Windows operating systems are supported.
- Binary drivers for most of the popular Linux distributions, such as CentOS, Ubuntu, etc. are available. Users can download the binary driver for their specific distribution by choosing from the available drivers here:
<ftp://release@ftp.alazartech.com/outgoing/linux>

Only 64 bit Linux operating systems are supported.

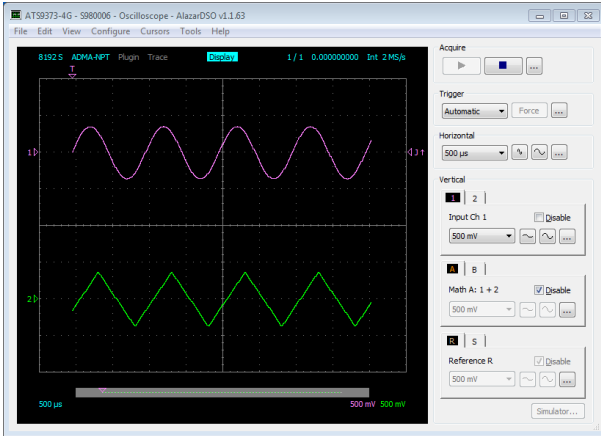
- Other Linux distributions may also be supported on a case by case basis. Please contact support@alazartech.com for more details. You must include the full output of `uname -a` command from your target Linux system in your email.

The AlazarTech engineering team may be able to generate an appropriate driver for a nominal fee, if applicable.

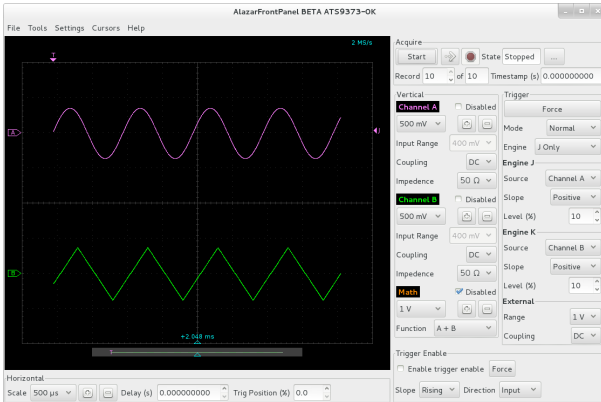
For using a programming language to acquire data from your ATS9130, you must purchase the ATS-SDK package.

Interactively Controlling your ATS9130

The AlazarDSO oscilloscope emulation software for Windows allows you to interactively control your ATS9130 as you would a desktop oscilloscope.



Under Linux, an application named Alazar Front Panel is available.



Note that Alazar Front Panel has a limited feature set.

ATS-SDK API

The ATS-SDK API is used for programming the ATS9130 in C/C++, C#, LabVIEW, MATLAB and Python. It provides the exact same API that is used for writing AlazarDSO software. To help you get started, ATS-SDK comes with examples you can use or modify.

The ATS-SDK contains the necessary files to develop applications both under Windows and Linux.

ATS-GPU

The ATS-GPU library provides a framework to allow real-time processing of data from AlazarTech PCIe digitizers on a CUDA-compatible GPU. Using pinned buffers, ATS-GPU can move data at PCI Express bus speed for ATS9130 (200 MB/s). To help you get started, ATS-GPU-BASE comes with an example of a user application that performs very simple signal processing (data inversion) that you can use or modify.

ATS-GPU-OCT is the optional OCT Signal Processing library for ATS-GPU. It contains floating point FFT routines that have been optimized to provide the maximum number of FFTs per second. Kernel code running on the GPU can do zero-padding, apply a windowing function, do a floating point FFT, calculate the amplitude and convert the result to a log scale. It is also possible to output phase information.

Optional Upgrades

AlazarTech offers the following upgrades for use with your ATS9130 digitizer:

- ATS9130: External Clock Upgrade

Chapter 2 - Installation and Configuration

This chapter describes how to unpack, install, and configure your ATS9130.

What You Need to Get Started

To set up and use your ATS9130, you will need the following:

- One or more ATS9130 digitizers



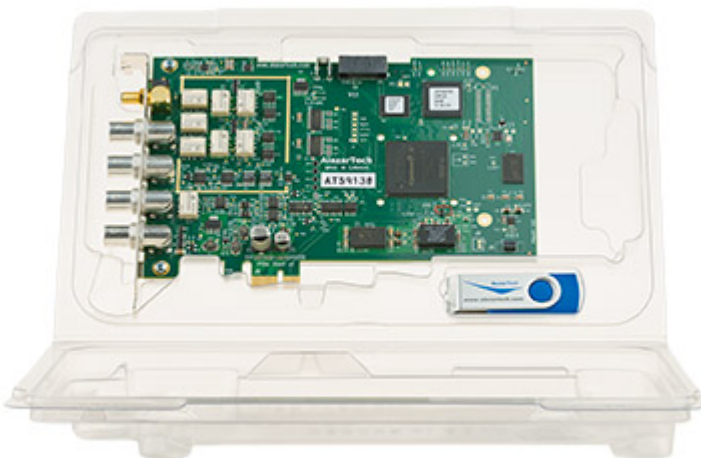
- ATS9130 Installation Software on USB Disk
(or downloaded software from www.alazartech.com/Support/Downloads)



Unpacking

Your digitizer is shipped in an antistatic clamshell package to prevent electrostatic damage to the digitizer. Electrostatic discharge can damage several components on the digitizer. To avoid such damage in handling the digitizer, take the following precautions:

- Ground yourself via a grounding strap or by holding a grounded object.
- Touch the antistatic package to a metal part of your computer chassis before removing the digitizer from the package.
- Remove the digitizer from the package and inspect the digitizer for loose components or any other sign of damage. Notify AlazarTech if the digitizer appears damaged in any way. Do *not* install a damaged digitizer into your computer.
- *Never* touch the exposed pins of the connectors.



Installing the ATS9130 in Windows

Linux users: skip to *Installing the ATS9130 in a Linux System*

There are four main steps involved in installation in a Windows computer:

1. Physically install the digitizer(s) in your computer.
2. Install ATS9130 software driver
3. Install AlazarDSO software that allows you to setup the hardware, acquire signals and view and archive them
4. Optionally, install:
 - a. The ATS-SDK software development kit, which enables you to programmatically control the ATS9130
 - b. The ATS-GPU library, which enables you to perform real-time processing of data from the ATS9130 on a CUDA compatible GPU

The following paragraphs will guide you through this process in a step-by-step manner.

1. Physically install the digitizer in your computer

Identify an unused PCI Express slot on your motherboard. As per PCI Express specification, the single-lane ATS9130 card is compatible with any 1-lane, 4-lane, 8-lane, or 16-lane connector on the motherboard. Make sure that your computer is powered off before you attempt to insert the ATS9130 digitizer in one of the free PCI Express slots. For best noise performance, leave as much room as possible between your ATS9130 and other hardware. Always screw the digitizer bracket to the chassis in order to create a stable and robust connection to chassis ground. In the absence of such a connection, ATS9130 is not guaranteed to operate within the specifications listed elsewhere in this manual.

2. Install ATS9130 software driver

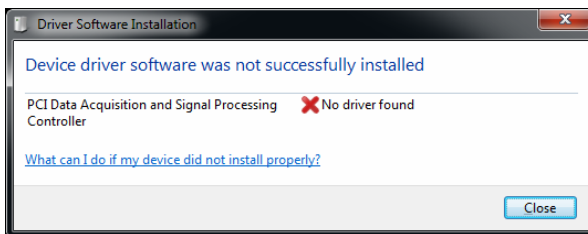
The following instructions guide you through the process of installing the ATS9130 in a computer running Windows 10, 8, 7, Windows Server 2013, Windows Server 2010, or Windows Server 2008 R2 operating systems.

Note that the images of the dialog boxes shown below were taken from a Windows 7 computer. Computers running other versions of Windows may have slightly different dialog boxes.

When you first boot up the computer, the plug-n-play Windows operating system will detect the presence of a new PCI card and will attempt to install the device driver if found on the computer.

- a) If the ATS9130 device driver is not found, Windows will display the following dialog box.

Click **Close**.

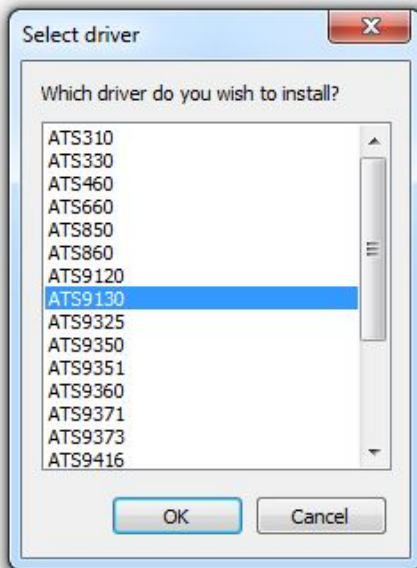


- b) Insert the installation disk that is supplied on a USB flash drive. If it does not auto-run, manually run the Autorun.exe program on the USB flash drive. The following splash screen will be displayed.

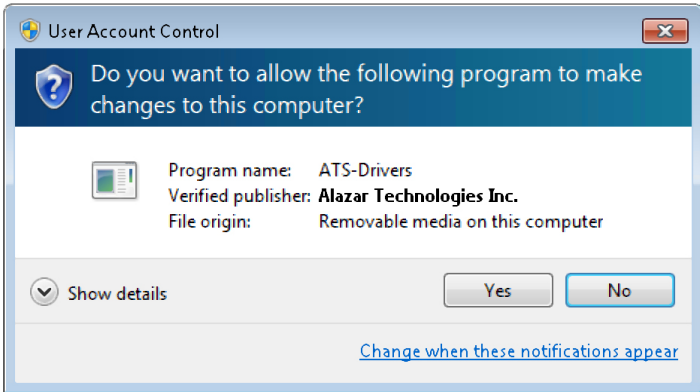
Click **Install Driver**.



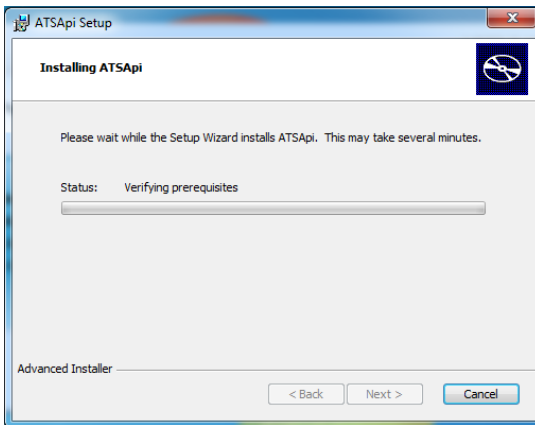
- c) The **Select Driver** window will appear. Select **ATS9130** and click **OK**.



- d) The **User Account Control** pop-up window will show up asking for installation permissions. Click **YES** to continue installation.



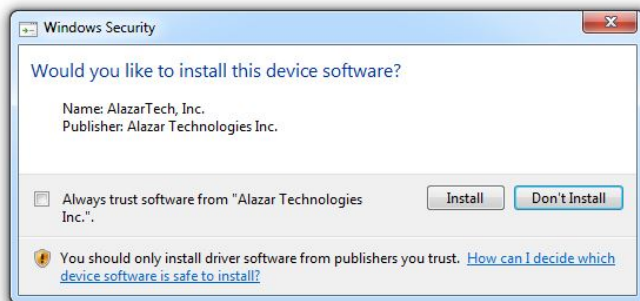
- e) Windows will install the ATSApi library.



- f) Windows will display the Welcome to the AlazarTech **ATS9130 Device Driver Installer**.



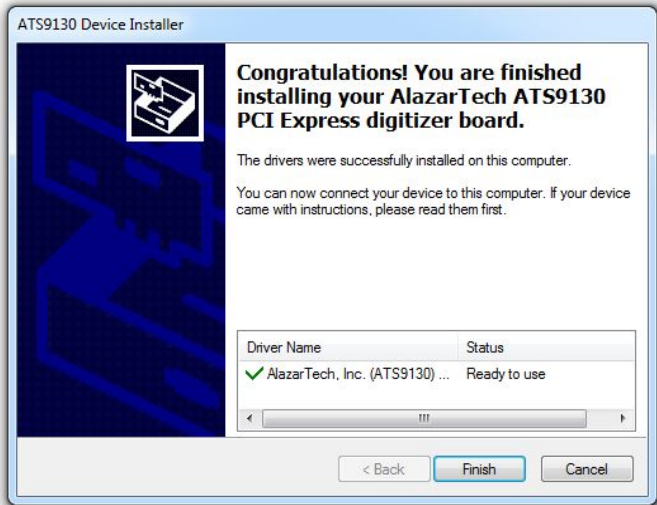
- g) Depending on the settings of your Windows user account, you may see a **Windows Security** screen. Press install, after optionally checking 'Always trust software from Alazar Technologies Inc.'



Note: If you have Windows 10 v.1607 or later, you cannot install AlazarTech driver versions older than 6.0.0. This is normal behavior. This limitation is due to Microsoft's driver code signing policy change, which now requires a SHA-2 code signing certificate.

- h) The **ATS9130 Device Installer** box will display the installation progress of the driver files.

Congratulations! The following final screen will confirm that the driver has been successfully installed.



3. Install AlazarDSO software that allows you to setup the hardware, acquire signals and view and archive them

If you are installing from the USB flash drive shipped with the ATS9130 digitizer, run the Autorun.exe:

- Click on Install AlazarDSO
- Follow the instructions on the screen.

If you are installing AlazarDSO after having downloaded the installation file from AlazarTech website:

- Download AlazarDSO installation file from www.alazartech.com/support/downloads.htm
- Unzip the file downloaded in the previous step.
- Browse to the folder that contains the unzipped file, AlazarDsoSetup.exe
- Run this executable file and follow the instructions on the screen.

4. Optionally, install the ATS-SDK and ATS-GPU software

Insert the ATS-SDK CD or ATS-GPU CD. Software installation will start automatically.

If, for any reason, installation does not start automatically:

- For ATS-SDK, run the ATS-SDK-Setup-7.x.x.exe.
- For ATS-GPU, run the ATS-GPU-x.x.x-win64.exe, then run ATS-SDK-Setup-7.x.x.exe. ATS-SDK is required for ATS-GPU. If you already have ATS-SDK installed on your system, please install the latest ATS-SDK included with your ATS-GPU.

Follow the instructions on the screen.

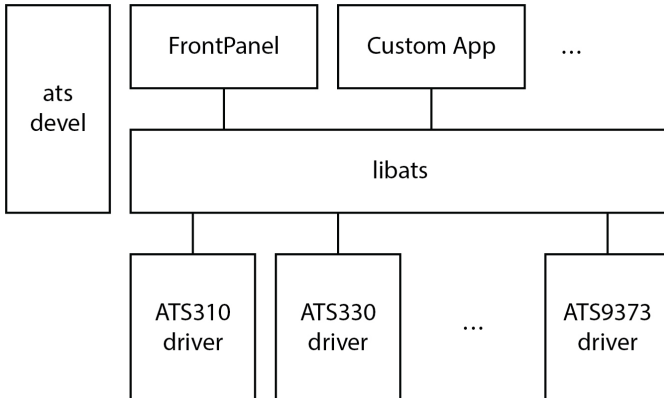
Note that you must have already installed the ATS9130 drivers for any of the sample programs included with the ATS-SDK or ATS-GPU to work properly.

In order to receive the 1 year of support and maintenance included with your ATS-SDK and ATS-GPU use the serial number provided on the CD envelope(s) and register your product(s) at:

<http://www.alazartech.com/UserHome?tab=2>.

Installing the ATS9130 in a Linux System

To get the latest version of all AlazarTech Linux Packages, please go to: <ftp://release@ftp.alazartech.com/Outgoing/Linux>



The AlazarTech software components used to communicate with digitizer boards and make acquisitions are divided into several packages:

- **libs**: The shared library that allows user programs to communicate with the board drivers.
- **alazar-front-panel**: A GTK-based virtual oscilloscope application that allows users to get started using the boards without developing their own software.
- **driver packages**: These packages each contain the driver for one of AlazarTech's products. Please note that, contrary to other packages, driver packages are dependent on kernel versions. As such, they are stored in directories named after the kernels they were compiled against. Please make sure to check your kernel version with "uname -a" and only install the driver package that matches your kernel version. If the driver for your specific kernel version is not available on our FTP site, please contact us.

The exact name on disk of a given package file depends on the computer architecture it is built for, the linux distribution used and the actual software version. For example, the driver for ATS9350 version 5.7.0-1 built for the "x86_64" architecture on CentOS is contained in the "ATS9350-5.7.0-1.x86_64.rpm" file.

Installation Instructions

AlazarTech packages can be installed using the standard tools of Linux distributions, e.g. yum/dnf on CentOS/RHEL and Fedora, and apt/aptitude on Debian/Ubuntu. For more information, refer to the documentation of your Linux distribution.

The ATS-SDK product contains an extra software package, called **ats-devel**, for your Linux distribution containing the following components:

1. A programmer's guide for the boards
2. Header files for C/C++ programming, and library wrappers for other programming languages
3. Code samples that demonstrate typical acquisition configurations

Note: The **ats-devel** package is not architecture specific. A “noarch” text replaces the usual x86₆₄ or i386 field.

On development machines, AlazarTech recommends to install all the packages provided with the boards. On the other hand, in a production environment, the “ats-devel” and “alazar-front-panel” packages are optional. It is enough to install the “libats” package in addition to user-developped applications and the drivers corresponding to the boards used to get a working system.

To install an ATS9130 on your Linux system, follow the next steps:

1. Connect one or several ATS9130 in your computer
2. Start your computer, and install all the software packages for your ATS9130.
3. If you purchased the optional ATS-GPU library, you should have received the software package for your Linux distribution. Contact support@alazartech.com if you have not received the appropriate software package.

Note: If you already have installed different AlazarTech products in your computer, only the driver package will be new. Be sure to use the latest version of all packages though, as for example older libraries may not be compatible with all the features of recent drivers.

Installation Troubleshooting

If you are experiencing difficulties using AlazarTech digitizers on your Linux system, please ensure that the following packages are all installed:

- alazar-front-panel
- libats
- driver package for your board (with the right kernel version)

If these packages are installed, but the AlazarFrontPanel application does not detect your board, please run the following command at a prompt:

```
$ lsmod | grep ATS
```

If this command shows no output, the driver for your board did not start. To know more, run the following command:

```
$ /usr/local/AlazarTech/bin/ATS9130.rc start
```

In the output of this command, if you see a "version mismatch" error, it indicates that the kernel version you are running does not correspond to that with which the driver package was built.


If there is a "Required key not available" message in the output, it indicates that the driver will not load because of a signature issue. On kernels where the `EFI_SECURE_BOOT_SIG_ENFORCE` config is enabled, third-party drivers cannot load if UEFI Secure Boot is active. The simplest solution is to disable secure boot in the UEFI BIOS settings.

Updating ATS9130 Driver

From time to time, AlazarTech updates the device drivers for its products. These updates may be required for product enhancements or for bug fixes.

This section of the manual takes you through the steps required to update the device driver for the ATS9130 PCI Express waveform digitizer.

In other words, this section shows you how to install a newer version of the driver, when you already have a previous version of the driver installed on your machine.

1. Download the latest driver from AlazarTech's website: www.alazartech.com/support/downloads.htm
2.  Unzip the downloaded file to a local folder
3. Run the resulting installation file (*.exe extension). For example, the installation file for driver version 6.7.0 is called **ATS9130_Driver_V6.7.0.exe**, and follow the instructions.

Please note:

AlazarTech recommends that you register your ATS9130 in order to receive notifications of new driver releases. Take note of your serial number and go to www.alazartech.com/UserHome.

You must be logged into your *My AlazarTech* account in order to register a product. If you do not have an account, sign-up for one here: www.alazartech.com/Regstart

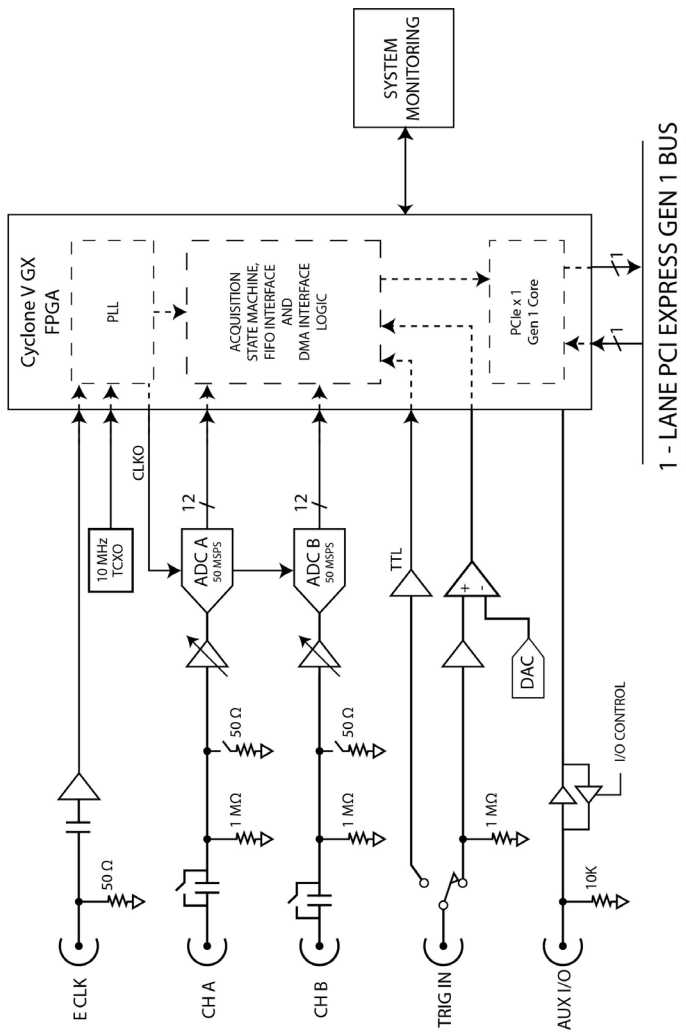
Chapter 3

Hardware Overview

This chapter includes an overview of the ATS9130, explains the operation of each functional unit making up your ATS9130, and describes the signal connections.

Following is a high-level block diagram of ATS9130.

ATS9130 BLOCK DIAGRAM



Physical Overview

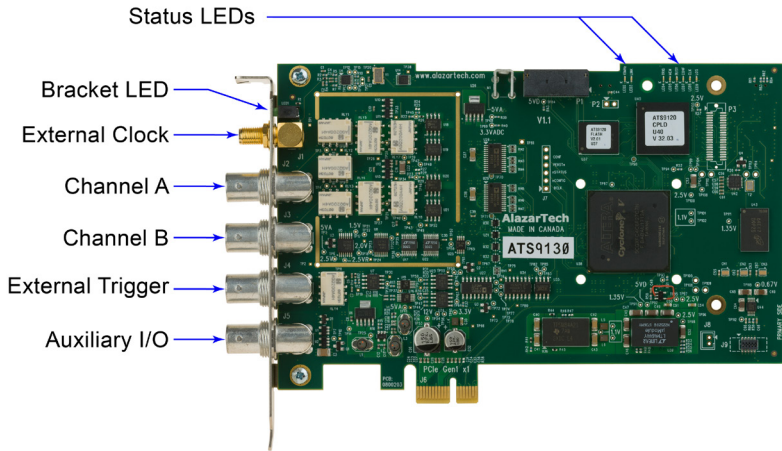


Figure 1 - ATS9130 Overview

ATS9130 has 1 SMA connector and 4 BNC connectors:

SMA:

- ECLK: The external clock input

BNC:

- CH A: The channel A input
- CH B: The channel B input
- TRIG IN: The external trigger input
- AUX I/O: An auxiliary input/output connector

It also has a bracket LED that can be software controlled, and is used for identification.

Lastly, ATS9130 has various [status LEDs](#) on the edge of the PCB that can be used for debugging.

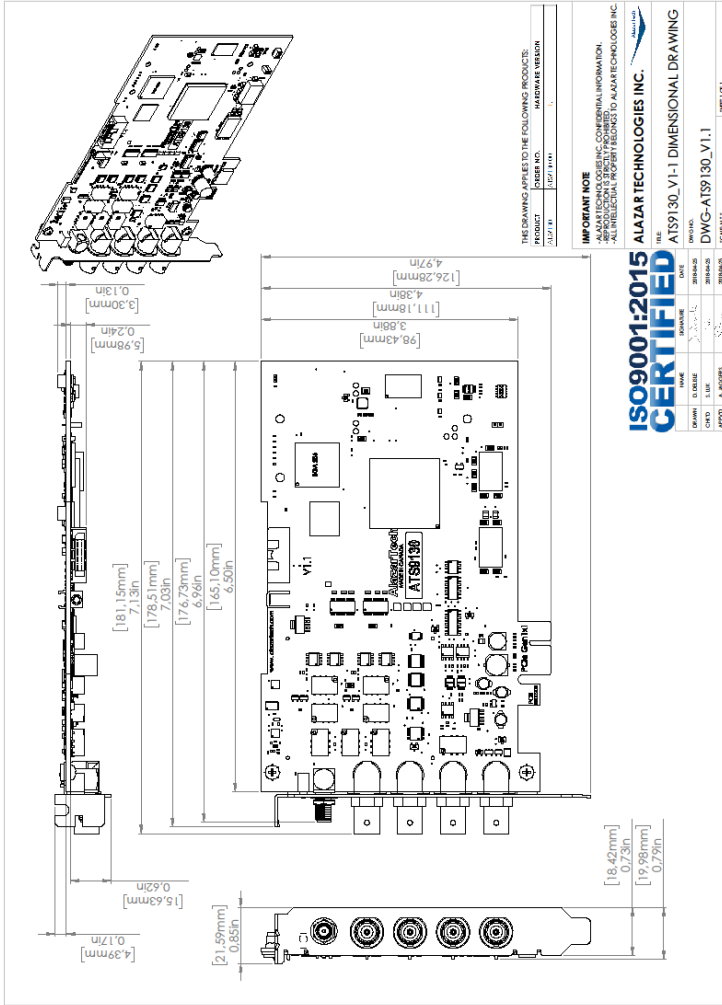
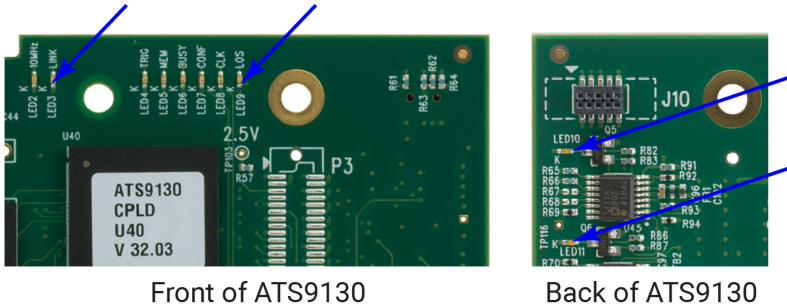


Figure 2 - Mechanical Drawing

Status LEDs

ATS9130 has 10 Status LEDs. Descriptions are provided below in the order in which they appear, from left to right:



Front of ATS9130

Back of ATS9130

Figure 3 - ATS9130 Status LEDs

- LED2 - 10MHz: This LED being on indicates that internal clock mode is on. In Ext Clk mode, this LED should be OFF.
- LED3 - LINK: This LED being on indicates that a PCIe link has been negotiated between the board and the motherboard. The exact time at which this LED turns on is dependent on the motherboard and its BIOS. Typically, this LED will turn on a few seconds after the FPGA is configured. If the FPGA LED is on but LINK LED does not turn on, it indicates either: the motherboard slot is not enabled by the CPU or the BIOS; or there is a problem in the transceiver power supplies; or one or more of the transceiver coupling capacitors along the gold-fingers on the secondary side have been damaged.
- LED4 - TRIG: This LED being on indicates that the board has received a trigger and is capturing post-trigger data. If board is being triggered repeatedly, this LED will blink or, if the trigger rate is very high, may even appear as a dimly lit LED
- LED5 - MEM: Reserved.

- LED6 - BUSY: This LED being on indicates that the board has been armed for capture. If board is being armed repeatedly, this LED will blink or, if the re-arm rate is very high, may even appear as a dimly lit LED.
- LED7 - CONF: This LED being on indicates that the FPGA was configured successfully. This LED turns on within 100 milliseconds of the computer power supply becoming stable and should remain on as long as the computer power is on. If this LED is off, it indicates either: a problem in one of the FPGA's power supply circuit; or the on-board flash memory that contains the FPGA configuration data has been corrupted.
- LED8 - CLK: This LED should blink constantly. It indicates that one of the base clocks is running at the required frequency of 50 MHz.
- LED9 - LOS: Loss of signal. This LED being on indicates that the crystal oscillator used to generate base clocks is not working. This LED should always be off. If the clock chip is not working normally, this LED will be on.
- LED10 - This LED being red means that there is an issue with one or more on-board power supplies for the ATS9130. More details are available in the Power Monitor plug-in of AlazarDSO (for Windows) and FrontPanel (for Linux). Refer to *Figure 4 - Flowchart for Power Monitor Status LEDs* for steps to follow if this LED is red.
- LED11 - This LED being red means that there is an issue with one or more on-board power supplies for the ATS9130. More details are available in the Power Monitor plug-in of AlazarDSO (for Windows) and FrontPanel (for Linux). Refer to *Figure 4 - Flowchart for Power Monitor Status LEDs* for steps to follow if this LED is red.

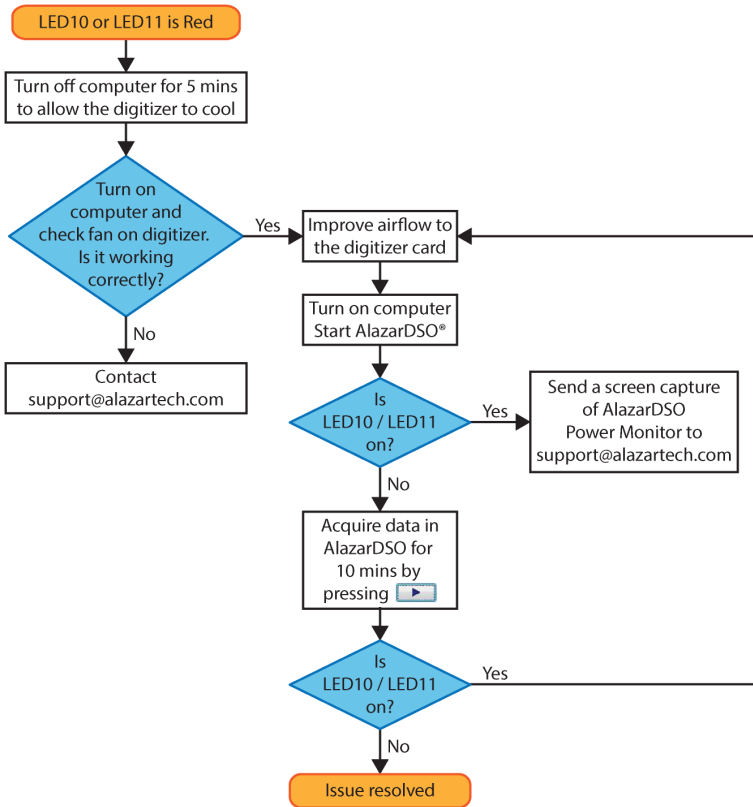


Figure 4 - Flowchart for Power Monitor Status LEDs

Consult this FAQ for instructions on accessing Power Monitor in AlazarDSO: www.alazartech.com/Support/Faq?se=1045

Note: for Power Monitor error outputs, the Status LED remains on even after the issue is resolved. To turn off the Status LED, you must press the “Clear Int.” button in the AlazarDSO Power Monitor plug-in or restart the computer.

Signal Connections

You can use CH A and CH B to digitize data as well as to trigger an acquisition.

Use the TRIG IN input for an external trigger only; data on the TRIG channel cannot be digitized.

If External Clock Upgrade is installed on your ATS9130, use the ECLK input for clocking the ATS9130 in applications that require an external clock. Note that the frequency of the signal injected into the ECLK connector must remain between 50 MS/s and 1 MS/s. Consult the chapter [Optional External Clock](#) for details on various types of clocking schemes available.

AUX I/O connector can be used as the following I/O's:

Outputs:

- Trigger Output
- Pacer (programmable clock) Output
- Digital Output

Inputs:

- Trigger Enable Input
- Digital Input

Analog Input

The two analog input channels are referenced to common ground in bipolar mode. These settings are fixed; therefore, neither the reference nor the polarity of input channels can be changed. You cannot use CH A or CH B to make differential measurements or measure floating signals unless you subtract the digital waveforms in software.

For accurate measurements, make sure the signal being measured is referenced to the same ground as your ATS9130 by attaching the cable's ground shield to the signal ground.

The External Trigger input (labeled TRIG IN) has a programmable input range of ± 2.5 V or TTL.

The CH A and CH B inputs have a software-programmable coupling selection between AC and DC. Use AC coupling when your AC signal contains a large DC component. Without AC coupling, it is difficult to view details of the AC component with a large DC offset and a small AC component, such as switching noise on a DC supply. If you enable AC coupling, you remove the large DC offset for the input amplifier and amplify only the AC component. This technique makes effective use of dynamic range to digitize the signal of interest.

The *low-frequency corner* in an AC-coupled circuit is the frequency below which signals are attenuated by at least 3 dB. The *low-frequency corner* is approximately 10 Hz with 1 M Ω input impedance and 100 kHz with 50 Ω input impedance.

Pipelined ADC

The ADC on the ATS9130 is a pipelined flash converter with a maximum conversion rate of 50 MS/s.

If you use an external clock, you must provide a free-running clock to ensure reliable operation. You also must follow all the timing specifications on the external clock as described in Appendix A, Specifications.

Using a pipelined architecture also introduces a lower limit on the sampling rate. For the ATS9130, the accuracy starts to degrade below 1 MS/s.

Specifying Record Length

Record Length is specified in number of sample points. It must be a minimum of 256 points and must be a multiple of 16.

Specifying Pretrigger Depth

ATS9130 acquires a certain number of samples, called the pretrigger depth, *before* it allows the trigger circuitry to operate, thereby guaranteeing that the required number of sample points will be captured before trigger occurs.

User is allowed to set pretrigger depth for an acquisition session. Same values are used for all records captured in that session.

For single-channel mode, pretrigger depth can be a minimum of 0, specified with a 16-point resolution, up to a maximum of 4080.

For dual-channel mode, pretrigger depth can be a minimum of 0, specified with a 16-point resolution, up to a maximum of 2040.

Specifying Record Count

User can specify the number of records that must be captured into host PC memory. The minimum value must be 1.

There is no upper limit on how many records you can capture in one acquisition.

Calibration

Calibration is the process of minimizing measurement errors by making small circuit adjustments.

All ATS9130 digitizers come factory calibrated to the levels indicated in Appendix A - Specifications. Note that AlazarTech calibration is fully NIST- or CNRC-traceable.

However, your digitizer needs to be periodically recalibrated in order to maintain its specified accuracy. This calibration due date is listed on the CALIBRATION sticker affixed to your ATS9130 digitizer.

Externally recalibrate the ATS9130 when this calibration interval has expired.

This requires three very simple steps:

1. Verify whether or not ATS9130 is still within its specifications. If it is, then your calibration can be extended by another one-year period
2. If not, perform calibration, i.e. make adjustments to the circuit until it is within specifications again
3. If any adjustments have been made, verify if the ATS9130 is within specifications

Recalibration must be performed at AlazarTech factory.

Optional External Clock

ATS9130 PCI Digitizer optionally allows you to supply the ADC clock. This option is extremely important in many RF applications in which phase measurements must be made between the inputs themselves or between the inputs and an external event.

Another application that requires external clock is Optical Coherence Tomography (OCT) that sometimes requires analog sampling to take place relative to an MZI clock, sometimes also known as k-clock.

Driving high performance ADCs must be done carefully, as any injection of phase jitter through ADC clocks will result in reduction in data conversion quality.

Aside from phase noise, the clock signal for a pipelined ADC must also have a duty cycle close to 50%. This maximizes the dynamic performance of the ADC. See Fast External Clock section below for more details.

External clock input impedance is fixed at 50 Ω for AC signals and 10 k Ω for DC.

External clock input is always AC-coupled.

There are two types of External Clock supported by ATS9130:

- Fast External Clock
- 10 MHz Clock Reference

The following paragraphs describe the two types of External Clock input and outline the restrictions on each of them.

Fast External Clock

This setting must be used when the external clock frequency is in the range of 50 MHz down to Lower Clock Limit of 1 MHz.

It is highly recommended that the Fast External Clock signal have a duty cycle of 50% +/- 5%. However, duty cycle specification can be substantially relaxed at lower frequencies.

If the External Clock supplied is lower than the Lower Clock Limit, measurement quality may be compromised. Measurement errors may include gain errors, signal discontinuities and general signal distortion.

External Clock must be an at least ± 200 mV sine wave or 3.3 V LVTTTL. Maximum amplitude for external clock is $2 V_{P-P}$.

The receiver circuit for Fast External Clock is a high speed ECL receiver that translates the input signal into a PECL (Positive ECL) clock signal that features very fast rise times.

Since Fast External Clock is always ac-coupled and selfbiased, there is no need for the user to set the external clock level.

10 MHz Clock Reference

ATS9130 allows the user to synchronize the sampling clock to an external 10 MHz reference signal. This is useful in many RF applications.

Reference clock frequency must be 10 MHz \pm 0.25 MHz. Amplitude can be a ± 200 mV sine or square wave.

In 10 MHz PLL external clock mode, the ATS9130 generates a fixed 50 MHz ADC clock frequency. Lower sample rates can be achieved using decimation.

Chapter 4

Specific Features

This section contains information about features specific to AlazarTech digitizers and ATS9130 in particular.

Streaming Data Across the Bus

One of the most unique features of the ATS9130 is its on-board dual-port acquisition memory that can be used for signal storage.

Data is acquired into the on-board memory before being transferred to the host PC memory. This transfer is performed using Direct Memory Access (DMA), which uses scatter-gather bus mastering technology. This on-board dual-port memory allows loss-less data transfer even if the computer is temporarily interrupted by other tasks.

These features are particularly useful for applications that require:

a) Continuous, gapless data capture. Also known as “Data Streaming” to PC host memory or hard disk

or

b) Data capture from rapidly occurring triggers, also known as Pulse Repeat Frequency Captures or PRF Captures.

In order to understand these sophisticated features, let us first review some of the issues involved in transferring data under Windows or Linux operating systems.

The Effects of the Operating System

Windows and most Linux distributions are not real-time operating systems, i.e. the operating system cannot guarantee a deterministic response time to an event, such as an interrupt or a software generated event.

This means that if software has to play any appreciable part in data transfer, then the data throughput cannot be guaranteed, as the operating system will have the last say as to when the data collection application will get the CPU cycles to execute the necessary commands.

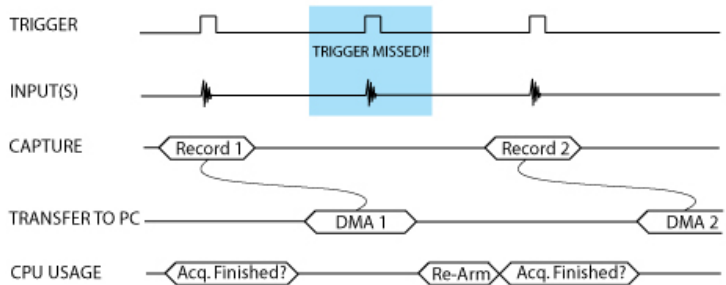
Note that the above is true even if the digitizer claims to use Direct Memory Access (DMA) to do the actual transfer, but uses software commands to re-arm the digitizer. It is the re-arm command that will determine the overall data throughput.

Dual Port Memory

The basic throughput problem faced by digitizers is that almost all of them use single-port memory, i.e. if you are reading data from the acquisition memory, you cannot capture into it and vice-versa.

This requires a software handshake which is heavily dependent on the operating system response time.

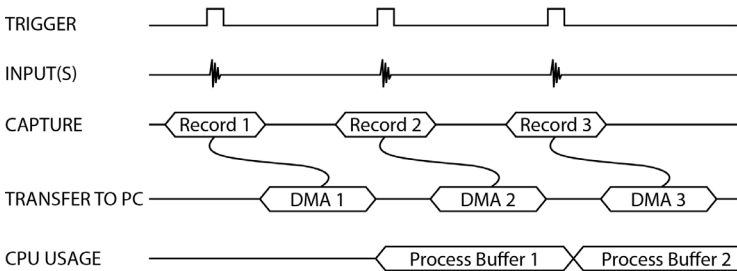
TRIGGERED DATA ACQUISITION USING SINGLE-PORT MEMORY



NOTE 1: Some Trigger events may be missed while data is being off-loaded from on-board memory
 NOTE 2: Virtually all CPU cycles are used up in managing data acquisition. Very little left for for data processing

ATS9130 solves this problem by providing dual-port memory and an advanced DMA engine that can stream data to PC host memory at up to 200 MB/s (exact rate is motherboard dependent).

TRIGGERED DATA ACQUISITION USING DUAL-PORT MEMORY



NOTE 1: No Trigger Events Are Missed - Guaranteed
 NOTE 2: Over 95% of CPU cycles are available for data processing

Bottom line is that software does not have to wait until the end of data capture to read the acquired data.

AutoDMA

Just having dual-ported memory on its own, does not solve the problem of PRF captures or streaming applications. Software still has to get involved in re-arming the hardware after every capture and again for reading the data from on-board acquisition memory.

ATS9130's proprietary AutoDMA circuitry allows the acquisition system to be re-armed by a hardware command and data transfer to be initiated by the hardware itself, thus removing virtually all "in-process" software involvement.

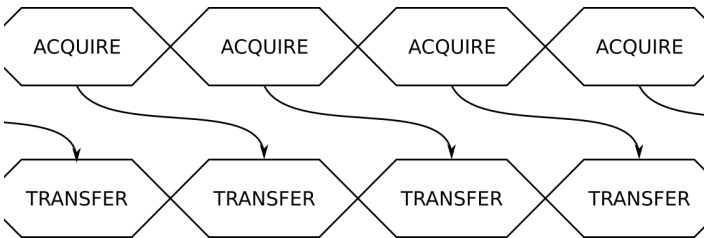


Figure 5 - AutoDMA acquisition and transfer cycle

Of course, software still has to set up the DMA when one of the buffers fills up, but, thanks to the DMA engine and fully asynchronous driver that uses overlapped IO, these tasks can be paralleled.

In other words, when software is re-arming DMA channel 0, DMA channel 1 is already transferring data to host memory.

Note that if data throughput is too high, a `DMA_OVERFLOW` flag gets set and is available to the programmer.

Consumption of the captured data is, of course, under the control of user-created software, and it is this that will determine the maximum PRF instead of the bus throughput.

The important thing to note is that if asynchronous DMA is used, CPU usage is no more than 5%, even if a 200 MS/s DMA is going on.

Traditional AutoDMA

In order to acquire both pre-trigger and post-trigger data in a dual-ported memory environment, users can use Traditional AutoDMA.

Data is returned to the user in buffers, where each buffer can contain from 1 to 8191 records (triggers). This number is called `RecordsPerBuffer`.

A `BUFFER_OVERFLOW` flag is asserted if more than 512 buffers have been acquired by the acquisition system, but not transferred to host PC memory by the AutoDMA engine.

While Traditional AutoDMA can acquire data to PC host memory at the maximum sustained transfer rate of the motherboard, a `BUFFER_OVERFLOW` can occur if more than 512 triggers occur in very rapid succession, even if all the on-board memory has not been used up.

No Pre-Trigger (NPT) AutoDMA

Many ultrasonic scanning and medical imaging applications do not need any pre-trigger data: only post-trigger data is sufficient.

NPT AutoDMA is designed specifically for these applications. By only storing post-trigger data, the data throughput is optimized.

Note that a DMA is not started until `RecordsPerBuffer` number of records (triggers) have been acquired.

NPT AutoDMA buffers do not include headers, so it is not possible to get trigger time-stamps.

More importantly, a `BUFFER_OVERFLOW` flag is asserted only if the entire on-board memory is used up. This provides a very substantial improvement over Traditional AutoDMA.

NPT AutoDMA can easily acquire data to PC host memory at the maximum sustained transfer rate of the motherboard without causing an overflow.

This is the recommended mode of operation for most ultrasonic scanning, OCT and medical imaging applications.

Continuous AutoDMA

Continuous AutoDMA is also known as the data streaming mode.

In this mode, data starts streaming across the PCI bus as soon as the ATS9130 is armed for acquisition. It is important to note that triggering is disabled in this mode.

Continuous AutoDMA buffers do not include headers, so it is not possible to get trigger time-stamps.

A `BUFFER_OVERFLOW` flag is asserted only if the entire on-board memory is used up.

The amount of data to be captured is controlled by counting the number of buffers acquired. Acquisition is stopped by an `AbortCapture` command.

Continuous AutoDMA can easily acquire data to PC host memory at the maximum sustained transfer rate of the motherboard without causing an overflow.

This is the recommended mode for very long signal recording.

Triggered Streaming AutoDMA

Triggered Streaming AutoDMA is virtually the same as Continuous mode, except the data transfer across the bus is held off until a trigger event has been detected.

Triggered Streaming AutoDMA buffers do not include headers, so it is not possible to get trigger time-stamps.

A `BUFFER_OVERFLOW` flag is asserted only if the entire on-board memory is used up.

As in Continuous mode, the amount of data to be captured is controlled by counting the number of buffers acquired.

Acquisition is stopped by an `AbortCapture` command.

Triggered Streaming AutoDMA can easily acquire data to PC host memory at the maximum sustained transfer rate of the motherboard without causing an overflow.

This is the recommended mode for RF signal recording that has to be started at a specific time, e.g. based on a GPS pulse.

Stream To Memory

AlazarDSO features a free 'Stream To Memory' module which allows it's users to acquire data to computer RAM and to analyse it or save it to disk later. This is very useful in cases where the acquisition data rate is higher than the disk writing speed, but the total acquisition size is less than the free RAM of the computer.

This module is accessed by clicking on Tools >> Stream To Memory...

Appendix A - Specifications

This appendix lists the specifications of the ATS9130. These specifications are typical at 25 °C unless otherwise stated. The operating temperature range is 0 to 55 °C.

Minimum Requirements

OS	Windows 10, Windows 8.x, Windows 7, Windows Server 2013, Windows Server 2010 or Windows Server 2008 (both 32 and 64 bit), or one of the <i>Supported Linux Distributions</i>
RAM	16 GB
HDD	100 MB of free hard disk space
PCIe Slot	One free PCIe slot .

Power Requirements

+12 V	1 A, typical
+3.3 V	0.25 A, typical

Physical

Size	Single slot, half-length PCIe card (4.38 inches x 6.5 inches excluding the connectors protruding from the front panel)
Weight	142 g

I/O Connectors

ECLK	SMA female
CH A	BNC female
CH B	BNC female
TRIG IN	BNC female
AUX I/O	BNC female

Environmental

Operating temperature	0 to 55 °C
Storage temperature	-20 to 70 °C
Relative humidity	5 to 95%, non-condensing

Acquisition System

Resolution	12 bits
Bandwidth (-3 dB)	
DC-coupled, 1 M Ω	DC - 25 MHz
DC-coupled, 50 Ω	DC - 25 MHz
AC-coupled, 1 M Ω	10 Hz - 25 MHz
AC-coupled, 50 Ω	100 kHz - 25 MHz
Bandwidth flatness:	± 3 dB
Number of channels	2 simultaneously sampled
Maximum Sample Rate	50 MS/s single shot
Minimum Sample Rate	1 KS/s single shot (internal clock)
Full Scale Input ranges	
1 M Ω input impedance:	± 40 mV, ± 50 mV, ± 80 mV, ± 100 mV, ± 200 mV, ± 400 mV, ± 500 mV, ± 800 mV, ± 1 V, ± 2 V, ± 4 V, ± 5 V, ± 8 V, ± 10 V, and ± 20 V software selectable.
50 Ω input impedance:	± 40 mV, ± 50 mV, ± 80 mV, ± 100 mV, ± 200 mV, ± 400 mV, ± 500 mV, ± 800 mV, ± 1 V, ± 2 V, and ± 4 V, software selectable.
DC accuracy	$\pm 2\%$ of full scale in all input ranges
Input coupling	AC or DC, software selectable
Input impedance	50 Ω or 1 M Ω $\pm 1\%$ in parallel with 55 pF ± 5 pF, software selectable For input ranges ≥ 2 V: 53 pF ± 2 pF For input ranges ≤ 1 V: 56 pF ± 2 pF
Input protection	
1 M Ω	± 28 V (DC + peak AC for CH A, CH B, and EXT only without external attenuation)
50 Ω	± 4 V (DC + peak AC for CH A, CH B, and EXT only without external attenuation)

Acquisition Memory System

On-board acq memory	8 M
Acquisition Memory/ch	Up to 8 Million samples per channel
Record Length	Software selectable with 16-point resolution. Record length must be a minimum of 256 points and must be a multiple of 16.

Number of Records	Software selectable from a minimum of 1 to a maximum of infinite number of records
Pre-trigger depth	
Single-channel	0 to 4080, software selectable with 16 point resolution in NPT mode
Dual-channel	0 to 2040, software selectable with 16 point resolution in NPT mode
Post-trigger depth	Record Length – Pre-Trigger Depth

Timebase System

Timebase options	Internal Clock or External Clock (Optional)
Internal Sample Rates	50 MS/s, 25 MS/s, 10 MS/s, 5 MS/s, 2 MS/s, 1 MS/s, 500 KS/s, 200 KS/s, 100 KS/s, 50 KS/s, 20 KS/s, 10 KS/s, 5 KS/s, 2 KS/s, 1 KS/s
Internal Clock accuracy	±25 ppm

Dynamic Parameters

Typical values measured using a randomly selected ATS9130 in ± 1 V input range, DC coupling and 50Ω impedance. Input was provided by a HP8656A signal generator, followed by a 9-pole, 1 MHz band-pass filter. Input frequency was set at 1 MHz and amplitude was 650 mV rms (92% of full scale input).

SNR	60 dB
SINAD	58 dB
THD	-61 dB
SFDR	-62 dB

Note that these dynamic parameters may vary from one unit to another, with input frequency and with the full scale input range selected.

Optional ECLK (External Clock) Input

Signal Level	± 200 mV sine wave or 3.3 V LVTTTL
Input Impedance	50 Ω for AC signals 10 k Ω for DC
Input Coupling	AC coupled
Maximum Frequency	50 MHz for Fast External Clock
Minimum Frequency	1 MHz for Fast External Clock
Sampling Edge	Rising
Maximum Amplitude	2 V_{P-P}

Optional 10 MHz Rereference Input

Signal Level	± 200 mV sine wave or square wave
Input Impedance	50 Ω
Input Coupling	AC coupled
Input Frequency	10 MHz ± 0.1 MHz
Maximum frequency	10.1 MHz
Minimum frequency	9.9 MHz
Sampling Clock Frequency	50 MHz fixed. Lower sample rates available using decimation

Triggering System

Mode	Edge triggering with hysteresis
Comparator Type	Analog comparators
Trigger Engines	2
Trigger Engine Combination	Engine J, engine K, J OR K, software-selectable
Trigger Engine Source	CH A, CH B, EXT, Software or None, independently software selectable for each of the two Trigger Engines
Hysteresis	$\pm 5\%$ of full-scale input, typical
Trigger sensitivity	$\pm 10\%$ of full scale input range. This implies that the trigger system may not trigger reliably if the input has an amplitude less than $\pm 10\%$ of full-scale input range selected
Trigger level accuracy	$\pm 5\%$, typical, of full-scale input range of the selected trigger source

Bandwidth	25 MHz
Trigger Delay	Software selectable from 0 to 9,999,999 sampling clock cycles. Has to meet alignment requirements (see ATS-SDK Guide for more information)
Trigger Timeout	Software selectable with a 10 μ s resolution. Maximum settable value is 3,600 seconds. Can also be disabled to wait indefinitely for a trigger event

TRIG IN (External Trigger) Input

Input type	Analog or 3.3 V TTL (5 V compliant), software selectable
Input coupling	DC only
Analog input impedance	1 M Ω
Analog bandwidth (-3 dB)	DC - 25 MHz
Analog input range	± 2.5 V
Analog DC accuracy	$\pm 10\%$ of full scale input
Analog input protection	± 8 V (DC + peak AC without external attenuation)
TTL input impedance	10 k Ω $\pm 10\%$
TTL min. pulse width	32 ADC sampling clocks
TTL min. pulse amplitude	2 Volts
TTL input protection	-0.7 V to + 5.5 V

Certification and Compliances

RoHS 3 (Directive 2015/863/EU) Compliance

CE Marking — EC Conformity

FCC Part 15 Class A / ICES-003 Class A Compliance

Materials Supplied

One ATS9130 PCI Express Card

One ATS9130 Install Disk on USB flash drive

Supported Linux Distributions

AlazarTech offers ATS9130 binary drivers for most of the popular Linux distributions, such as CentOS, Ubuntu,...

Users can download the binary driver for their specific distribution by choosing from the available drivers here:

<ftp://release@ftp.alazartech.com/outgoing/linux>

All specifications are subject to change without notice

Appendix B - Benchmarks

This appendix lists the data throughput measured by our technicians on various computers and motherboards under different operating systems.

Given the constantly changing nature of computers, these benchmarks are provided as a reference only and AlazarTech assumes no liability in case the computer you purchase behaves differently than what was observed in AlazarTech's laboratory.

Table 1 – Bus Throughput Benchmark

Model	Chipset	CPU	Throughput
ASUS X99-A Deluxe	Intel X99-A	i7-5960K	224 MB/s
Dell Precision T7600	Intel C600	2x Xeon E5-2609	216 MB/s
ASUS P9X79 LE	Intel X79	Xeon E5-2603	222 MB/s

Table 2 - Linux Bus Throughput Benchmark

Model	Chipset	CPU	Distro	Throughput
ASUS X99 Deluxe	Intel X99	i7-5930K	CentOS 7	224 MB/s
ASUS P9X79 LE	Intel X79	Xeon E5-2603	CentOS 7	222 MB/s

[List of AlazarTech Recommended Motherboards & PCs](#)



ALAZAR TECHNOLOGIES INC.

6600 Trans-Canada Highway

Suite 310

Pointe-Claire, QC

CANADA H9R 4S2

Tel: (514) 426-4899

Fax: (514) 426-2723

E-mail: sales@alazartech.com

Web: www.alazartech.com