



AlazarTech

ATS9360 User Manual

12 Bit, 1.8 GS/s
Waveform Digitizer for PCI Express Gen2 Bus



Written for Hardware Version 1.2
April 2013 Edition
Part Number: 9360-USR-1

Copyright © 2010 - 2013 AlazarTech. All rights reserved.

AlazarTech Contact Information

AlazarTech, Inc.
6600 Trans-Canada Highway
Suite 310
Pointe-Claire, QC
Canada H9R 4S2

Telephone: (514) 426-4899
Fax: (514) 426-2723

E-mail: info@alazartech.com
Web site: www.alazartech.com

To comment on the documentation for ATS9360, send e-mail to support@alazartech.com.

Information required when contacting AlazarTech for technical support:

Owned by: _____

Serial Number: _____

Purchase Date: _____

Purchased From: _____

Software Driver Version: _____

SDK Version: _____

AlazarDSO Version: _____

Operating System: _____

Important Information

Warranty

The ATS9360 is warranted against defects in materials and workmanship for a period of one year from the date of shipment, as evidenced by receipts or other documentation. AlazarTech, Inc. will, at its option, repair or replace equipment that proves to be defective during the warranty period. This warranty includes parts and labor.

The media on which you receive AlazarTech, Inc. software are warranted not to fail to execute programming instructions, due to defects in materials and workmanship, for a period of 90 days from date of shipment, as evidenced by receipts or other documentation. AlazarTech, Inc. will, at its option, repair or replace software media that do not execute programming instructions if AlazarTech, Inc. receives notice of such defects during the warranty period. AlazarTech, Inc. does not warrant that the operation of the software shall be uninterrupted or error free.

A Return Material Authorization (RMA) number must be obtained from the factory and clearly marked on the outside of the package before any equipment will be accepted for warranty work. AlazarTech, Inc. will pay the shipping costs of returning to the owner parts that are covered by warranty.

AlazarTech, Inc. believes that the information in this document is accurate. The document has been carefully reviewed for technical accuracy. In the event that technical or typographical errors exist, AlazarTech, Inc. reserves the right to make changes to subsequent editions of this document without prior notice to holders of this edition. AlazarTech, Inc. may also make improvements and/or changes in the products and/or programs described in this document at any time. The reader should consult AlazarTech, Inc. if errors are suspected. In no event shall AlazarTech, Inc. be liable for any damages arising out of or related to this document or the information contained in it. The latest user manual can be found on the AlazarTech, Inc. web page at www.alazartech.com/support/downloads.htm.

EXCEPT AS SPECIFIED HEREIN, ALAZARTECH, INC. MAKES NO WARRANTIES, EXPRESS OR IMPLIED, AND SPECIFICALLY DISCLAIMS ANY WARRANTY OF MERCHANTABILITY OR FITNESS FOR A PARTICULAR PURPOSE. CUSTOMER'S RIGHT TO RECOVER DAMAGES CAUSED BY FAULT OR NEGLIGENCE ON THE PART OF ALAZARTECH, INC. SHALL BE LIMITED TO THE AMOUNT THERETOFORE PAID BY THE CUSTOMER. ALAZARTECH, INC. WILL NOT BE LIABLE FOR DAMAGES RESULTING FROM LOSS OF DATA, PROFITS, USE OF PRODUCTS, OR INCIDENTAL OR CONSEQUENTIAL DAMAGES, EVEN IF ADVISED OF THE POSSIBILITY THEREOF. This limitation of the liability of AlazarTech, Inc. will apply regardless of the form of action, whether in contract or tort, including negligence. Any action against AlazarTech, Inc. must be brought within one year after the cause of action accrues. AlazarTech, Inc. shall not be liable for any delay in performance due to causes beyond its reasonable control. The warranty provided herein does not cover damages, defects, malfunctions, or service failures caused by owner's failure to follow the AlazarTech, Inc. installation, operation, or maintenance instructions; owner's modification of the product; owner's abuse, misuse, or negligent acts; and power failure or surges, fire, flood, accident, actions of third parties, or other events outside reasonable control.

Copyright

Under the copyright laws, this publication may not be reproduced or transmitted in any form, electronic or mechanical, including photocopying, recording, storing in an information retrieval system, or translating, in whole or in part, without the prior written consent of AlazarTech, Inc.

Trademarks

AlazarTech, Inc.[™], AlazarTech[™], alazartech.com[™], ATS[™], ATS9360[™], AlazarDSO[™], are trademarks of AlazarTech, Inc. Product and company names mentioned herein are trademarks or trade names of their respective companies.

Warning Regarding Use of AlazarTech Products

1. ALAZARTECH, INC. PRODUCTS ARE NOT DESIGNED WITH COMPONENTS AND TESTING FOR A LEVEL OF RELIABILITY SUITABLE FOR USE IN OR IN CONNECTION WITH SURGICAL IMPLANTS OR AS CRITICAL COMPONENTS IN ANY LIFE SUPPORT SYSTEMS WHOSE FAILURE TO PERFORM CAN REASONABLY BE EXPECTED TO CAUSE SIGNIFICANT INJURY TO A HUMAN.
2. IN ANY APPLICATION, INCLUDING THE ABOVE, RELIABILITY OF OPERATION OF THE SOFTWARE PRODUCTS CAN BE IMPAIRED BY ADVERSE FACTORS, INCLUDING BUT NOT LIMITED TO FLUCTUATIONS IN ELECTRICAL POWER SUPPLY, COMPUTER HARDWARE MALFUNCTIONS, COMPUTER OPERATING SYSTEM SOFTWARE FITNESS, FITNESS OF COMPILERS AND DEVELOPMENT SOFTWARE USED TO DEVELOP AN APPLICATION, INSTALLATION ERRORS, SOFTWARE AND HARDWARE COMPATIBILITY PROBLEMS, MALFUNCTIONS OR FAILURES OF ELECTRONIC MONITORING OR CONTROL DEVICES, TRANSIENT FAILURES OF ELECTRONIC SYSTEMS (HARDWARE AND/OR SOFTWARE), UNANTICIPATED USES OR MISUSES, OR ERRORS ON THE PART OF THE USER OR APPLICATIONS DESIGNER (ADVERSE FACTORS SUCH AS THESE ARE HEREAFTER COLLECTIVELY TERMED "SYSTEM FAILURES"). ANY APPLICATION WHERE A SYSTEM FAILURE WOULD CREATE A RISK OF HARM TO PROPERTY OR PERSONS (INCLUDING THE RISK OF BODILY INJURY AND DEATH) SHOULD NOT BE RELIANT SOLELY UPON ONE FORM OF ELECTRONIC SYSTEM DUE TO THE RISK OF SYSTEM FAILURE. TO AVOID DAMAGE, INJURY, OR DEATH, THE USER OR APPLICATION DESIGNER MUST TAKE REASONABLY PRUDENT STEPS TO PROTECT AGAINST SYSTEM FAILURES, INCLUDING BUT NOT LIMITED TO BACK-UP OR SHUT DOWN MECHANISMS. BECAUSE EACH END-USER SYSTEM IS CUSTOMIZED AND DIFFERS FROM ALAZARTECH, INC.'S TESTING PLATFORMS AND BECAUSE A USER OR APPLICATION DESIGNER MAY USE ALAZARTECH, INC. PRODUCTS IN COMBINATION WITH OTHER PRODUCTS IN A MANNER NOT EVALUATED OR CONTEMPLATED BY ALAZARTECH, INC., THE USER OR APPLICATION DESIGNER IS ULTIMATELY RESPONSIBLE FOR VERIFYING AND VALIDATING THE SUITABILITY OF ALAZARTECH INC. PRODUCTS WHENEVER ALAZARTECH, INC. PRODUCTS ARE INCORPORATED IN A SYSTEM OR APPLICATION, INCLUDING, WITHOUT LIMITATION, THE APPROPRIATE DESIGN, PROCESS AND SAFETY LEVEL OF SUCH SYSTEM OR APPLICATION.

Compliance

FCC/Canada Radio Frequency Interference Compliance*

Determining FCC Class

The Federal Communications Commission (FCC) has rules to protect wireless communications from interference. The FCC places digital electronics into two classes. These classes are known as Class A (for use in industrial-commercial locations only) or Class B (for use in residential or commercial locations). Depending on where it is operated, this product could be subject to restrictions in the FCC rules. (In Canada, the Department of communications (DOC), of Industry Canada, regulates wireless interference in much the same way.)

Digital electronics emit weak signals during normal operation that can affect radio, television, or other wireless products. By examining the product you purchased, you can determine the FCC Class and therefore which of the two FCC/DOC Warnings apply in the following sections. (Some products may not be labeled at all for FCC; if so, the reader should then assume these are Class A devices.)

FCC Class A products only display a simple warning statement of one paragraph in length regarding interference and undesired operation. Most of our products are FCC Class A. The FCC rules have restrictions regarding the locations where FCC Class A products can be operated.

FCC Class B products display either a FCC ID code, starting with the letters **EXN**, or the FCC Class B compliance mark.

Consult the FCC web site <http://www.fcc.gov> for more information.

FCC/DOC Warnings

This equipment generates and uses radio frequency energy and, if not installed and used in strict accordance with the instructions in this manual and the CE Mark Declaration of Conformity**, may cause interference to radio and television reception. Classification requirements are the same for the Federal Communications Commission (FCC) and the Canadian Department of Communications (DOC).

Changes or modifications not expressly approved by AlazarTech Inc. could void the user's authority to operate the equipment under the FCC Rules.

Class A

Federal Communications Commission

This equipment has been tested and found to comply with the limits for a Class A digital device, pursuant to part 15 of the FCC Rules. These limits are designed to provide reasonable protection against harmful interference when the equipment is operated in a commercial environment. This equipment generates, uses, and can radiate radio frequency energy and, if not installed and used in accordance with the instruction manual, may cause harmful interference to radio communications. Operation of this equipment in a residential area is likely to cause harmful interference in which case the user will be required to correct the interference at his own expense.

Canadian Department of Communications

This Class A digital apparatus meets all requirements of the Canadian Interference-Causing Equipment Regulations. *Cet appareil numérique de la classe A respecte toutes les exigences du Règlement sur le matériel brouilleur du Canada.*

Compliance to EU Directives

Readers in the European Union (EU) must refer to the Manufacturer's Declaration of Conformity (DoC) for information** pertaining to the CE Mark compliance scheme. The Manufacturer includes a DoC for most every hardware product except for those bought for OEMs, if also available from an original manufacturer that also markets in the EU, or where compliance is not required as for electrically benign apparatus or cables.

To obtain the DoC for this product, click **Declaration of Conformity** at <http://www.alazartech.com/support/documents.htm>. This web page lists all DoCs by product family. Select the appropriate product to download or read the DoC.

- * Certain exemptions may apply in the USA, see FCC Rules §15.103 **Exempted devices**, and §15.105(c). Also available in sections of CFR 47.
- ** The CE Mark Declaration of Conformity will contain important supplementary information and instructions for the user or installer.

Environmental Compliance

Alazar Technologies Inc., hereby certifies that this product is RoHS compliant, as defined by *Directive 2002/95/EC of the European Parliament and of the Council of 27 January 2003 on the restriction of the use of certain hazardous substances in electrical and electronic equipment*. All manufacturing has been done using RoHS-compliant components and lead-free soldering.

Table of Contents

Important Information	ii
Compliance	iv
Table of Contents	vi
CHAPTER 1 - INTRODUCTION	1
About Your ATS9360	2
Acquiring Data with Your ATS9360.....	4
Optional Upgrades	8
CHAPTER 2 - INSTALLATION AND CONFIGURATION.....	9
What You Need to Get Started	10
Unpacking	11
Installing the ATS9360	12
Installing the ATS9360 in a Linux System.....	20
Compiling the ATS9360 Linux Driver	21
Updating ATS9360 Driver	22
CHAPTER 3 - HARDWARE OVERVIEW.....	24
Input Connectors	26
Signal Connections	27
Analog Input	28
Amplifier Bypass Option	Error! Bookmark not defined.
Calibration	30
Master/Slave Operation.....	Error! Bookmark not defined.
Optional External Clock.....	31
Streaming Using Data FIFO	34
APPENDIX A - SPECIFICATIONS.....	44
APPENDIX B - BENCHMARKS	50

Chapter 1 - Introduction

This chapter describes the ATS9360 and lists additional equipment.



About Your ATS9360

Thank you for your purchase of an ATS9360. This PCI Express (PCIe Gen2 x8) based waveform digitizer has the following features:

- Two 12-bit resolution analog input channels
- Real-time sampling rate of 1.8 GS/s to 1 KS/s with internal clock and 1.8 GS/s to 300 MS/s with external clock
- Uses on-FPGA FIFO for data storage
- Streaming of acquired data to PC host memory at 3.5 GB/s (exact rate is motherboard dependent)
- 800 MHz analog input bandwidth
- Half length PCI Express (8 lane) card
- External trigger input channel with software-selectable level and slope
- DC coupling and fixed 50 Ω input impedance for analog inputs
- Pre-trigger and Post-Trigger Capture with Multiple Record capability
- NIST traceable calibration
- Dual DMA engines for best latency protection against Windows and Linux operating systems
- Fully asynchronous software driver for fastest DMA with least CPU overhead

All ATS9360 digitizers follow industry-standard Plug and Play specifications on all platforms and offer seamless integration with compliant systems.

Detailed specifications of the ATS9360 digitizers are listed in Appendix A, Specifications.

Acquiring Data with Your ATS9360

You can acquire data either programmatically by writing an application for your ATS9360 or interactively with the AlazarDSO software for Windows.

If you want to integrate the ATS9360 in your test and measurement or embedded OEM application, you can program the digitizer using C/C++, MATLAB or LabVIEW for Windows or C for Linux operating systems.

- Windows operating systems supported are Windows 8, Windows 7, Windows Vista and Windows XP. Both 32 bit and 64 bit operating systems.
- Note that Windows 98SE and Windows 2000 are not supported.

For programming in C/C++ or MATLAB, you must purchase the ATS-SDK software development kit that comes with sample programs and a reference manual describing the API.

For programming in LabVIEW, you must purchase the ATS-VI virtual instrument library that comes with a high-level, easy-to-use VI that makes integrating the ATS9360 into your own system very simple.

AlazarTech offers ATS9360 binary drivers for CentOS 6.3 x86_64 with kernel 2.6.32-279.5.2.el6.x86_64. These drivers are also 100% compatible with RHEL 6.3. Source code example programs are also provided, which demonstrate how to acquire data programmatically using a C compiler. If customers want to use ATS9360 in any Linux distribution other than the one listed above, they must purchase a license for Linux driver source code and compile the driver on the target operating system.

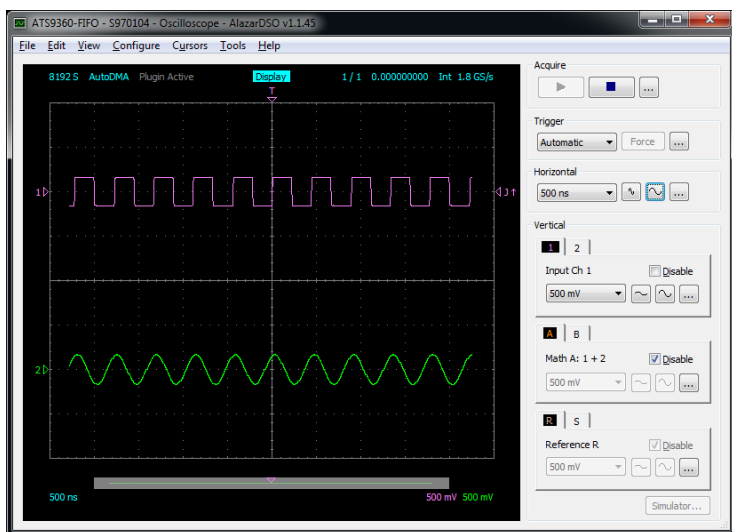
A Non-Disclosure Agreement must also be executed between the customer's organization and AlazarTech. All such source code disclosures are made on an as-is basis with limited support from the factory

Interactively Controlling your ATS9360 with AlazarDSO

The AlazarDSO oscilloscope emulation software for Windows allows you to interactively control your ATS9360 as you would a desktop oscilloscope. To launch the AlazarDSO, select

Start » Programs » AlazarTech » AlazarDSO

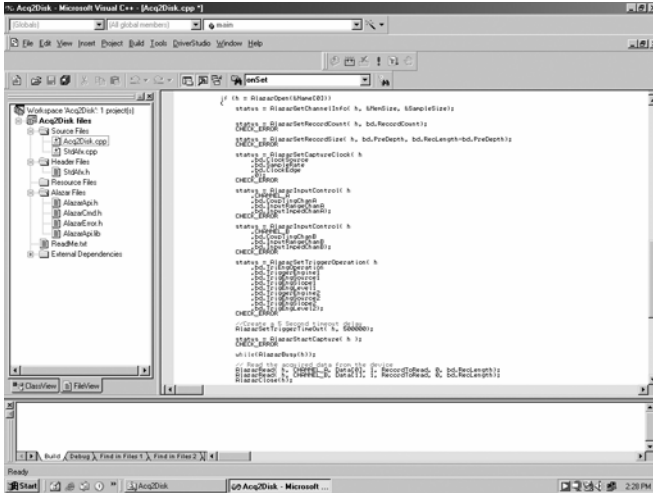
The following screen will be displayed. If you connect the input to a signal generator and click on **Start** button, you should see the signal on the screen.



AlazarDSO has been designed to be very intuitive and uses a user interface similar to most of today's digital oscilloscopes.

ATS-SDK API

The ATS-SDK, sold separately, API is used for programming the ATS9360 in C/C++ and MATLAB. It provides the exact same API that is used for writing AlazarDSO software. To help you get started, ATS-SDK comes with examples you can use or modify.



Optional Upgrades

AlazarTech offers the following upgrades and accessories for use with your ATS9360 digitizer:

- ATS9360: Standard External Clock Upgrade
(300MHz to 1.8 GHz)
- ATS9360: Screened External Clock Upgrade
(75MHz to 1.8GHz)
- AlazarDSO – Stream To Disk Module
- AlazarDSO – Plug-In Development Kit

Chapter 2 - Installation and Configuration

This chapter describes how to unpack, install, and configure your ATS9360.

What You Need to Get Started

To set up and use your ATS9360, you will need the following:

- One or more ATS9360 digitizers



- ATS9360 Installation Software on USB Disk



Unpacking

Your digitizer is shipped in an antistatic clamshell package to prevent electrostatic damage to the digitizer. Electrostatic discharge can damage several components on the digitizer. To avoid such damage in handling the digitizer, take the following precautions:

- Ground yourself via a grounding strap.
- Touch the antistatic package to a metal part of your computer chassis before removing the digitizer from the package.
- Remove the digitizer from the package and inspect the digitizer for loose components or any other sign of damage. Notify AlazarTech if the digitizer appears damaged in any way. Do *not* install a damaged digitizer into your computer.
- *Never* touch the exposed pins of the connectors.



Installing the ATS9360

There are four main steps involved in installation:

1. Physically install the digitizer(s) in your computer.
2. Install ATS9360 software driver
3. Install AlazarDSO software that allows you to setup the hardware, acquire signals and view and archive them
4. Optionally, install the ATS-SDK software development kit or ATS-VI LabVIEW VI, which enables you to programmatically control the ATS9360

The following paragraphs will guide you through this process in a step-by-step manner.

1. **Physically install the digitizer in your computer**

Identify an unused PCI Express slot on your motherboard. As per PCI Express specification, the 8-lane ATS9360 card is compatible with any 8-lane or 16-lane connector on the motherboard.

Make sure that your computer is powered off before you attempt to insert the ATS9360 digitizer in one of the free PCI Express slots.

For best noise immunity, leave as much room as possible between your ATS9360 and other hardware.

Always screw the digitizer bracket to the chassis in order to create a stable and robust connection to chassis ground.

In the absence of such a connection, ATS9360 is not guaranteed to operate within the specifications listed elsewhere in this manual.

Some motherboards may have an 8 or 16-lane connector, but only one or four of the lanes is connected to the motherboard chipset. Motherboard manufacturers refer to this as “Mechanically 16-lane, electrically 1 lane”. ATS9360 is fully compatible with such motherboards, but the data throughput across PCI Express bus will be limited by the

Install ATS9360 software driver

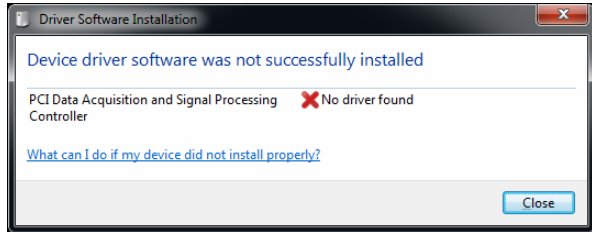
The following instructions guide you through the process of installing the ATS9360 in a computer running Windows 8, 7, Vista or Windows XP operating systems.

Other operating systems, such as Windows NT, Windows 2000, Windows 95 and Windows 98SE and Linux are not covered here.

Note that the images of the dialog boxes shown below were taken from a Windows 7 computer. Computers running other versions of Windows may have slightly different dialog boxes.

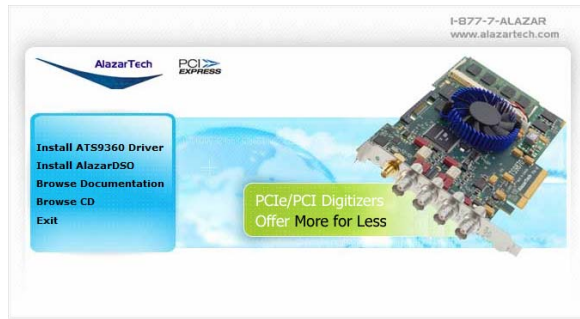
When you first boot up the computer, the plug-n-play Windows operating system will detect the presence of a new PCI express card and will attempt to install the device driver if found on the computer.

- a) If the ATS9360 device driver is not found, Windows will display the following dialog box



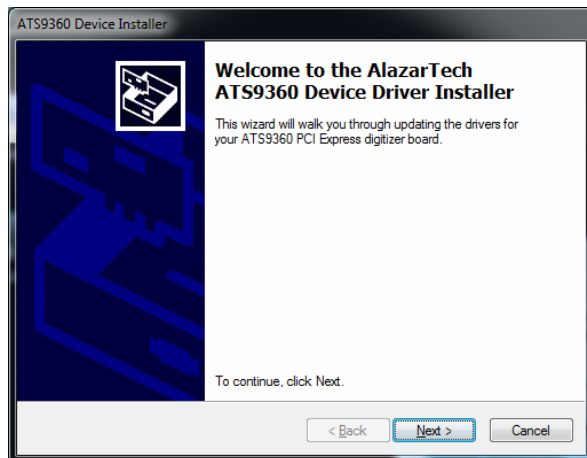
Click **Close**.

- b) Insert the installation disk that is supplied on a USB flash drive. If it does not auto-run, manually run the Autorun.exe program on the USB flash drive. The following splash screen will be displayed.



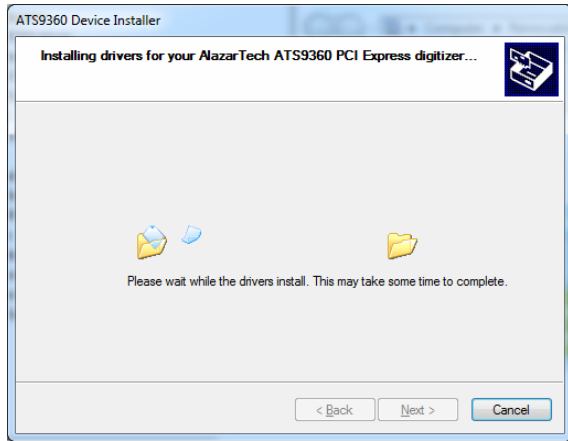
Click **Install ATS9360 Driver**.

- c) After clicking on **Install ATS9360 Driver**, Windows will display the **Welcome to the AlazarTech ATS9360 Device Driver Installer**

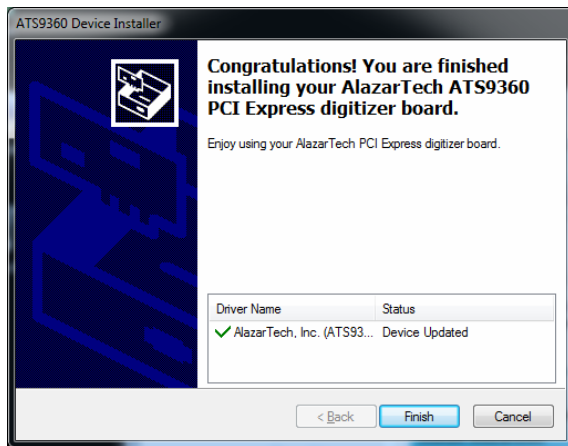


Click **Next**.

- d) The following dialog box will be displayed showing the progress of installation of ATS9360 driver files in the operating system driver store.



The following final screen will confirm that the driver has been installed.



Now your ATS9360 is fully installed and is ready to use.


a) **Install AlazarDSO software that allows you to setup the hardware, acquire signals and view and archive them**

If you are installing from the USB flash drive shipped with the ATS9360 digitizer, run the Autorun.exe:

- Click on **Install AlazarDSO**
- Follow the instructions on the screen.

If you are installing AlazarDSO after having downloaded the installation file from AlazarTech web site:

- Download AlazarDSO installation file from www.alazartech.com/support/downloads.htm
- Unzip the file downloaded in the previous step.
- Browse to the folder that contains the unzipped file, AlazarDsoSetup-1.1.45.exe
- Run this executable file and follow the instructions on the screen.

 If you try to run AlazarDsoSetup-1.1.45.exe within the zip file, the installation will fail.

4. **Optionally, install the ATS-SDK software development kit or ATS-VI LabVIEW VI, which enables you to programmatically control the ATS9360**

Insert the ATS-SDK or ATS-VI CD. Software installation will start automatically.

If, for any reason, installation does not start automatically, run the ATS-SDK-Setup-6.1.0.exe or ATS-VI-Setup-6.1.0.exe for the respective programs.

Follow the instructions on the screen.

Note that you must have already installed the ATS9360 drivers for any of the sample programs included with the ATS-SDK or ATS-VI to work properly.

Installing the ATS9360 in a Linux System

ATS9360 is fully compatible with the popular Linux operating system.

AlazarTech supplies binary drivers that have been tested under CentOS 6.3 x86_64 with kernel 2.6.32-279.5.2.el6.x86_64, which is binary compatible with RHEL 6.3.

To install Linux drivers in a CentOS 6.3 system, follow the instructions listed below:

1. Copy the supplied RPM file to the target machine
2. Double-click on the RPM icon. This will install the driver as well as associated example programs.
3. Reboot the PC.
Note that if you do not reboot the PC, the driver will not be loaded.

Compiling the ATS9360 Linux Driver

If you need to compile the ATS9360 driver for a version of Linux other than CentOS 6.3, follow these steps:

1. Install the Linux kernel header files.
2. Extract the driver sources using the command "PlxLinux_ATS9360_5.6.15.tgz ". This will create a folder names "PlxLinux" with the driver files inside.
3. Set the shell environment variable PLX_SDK_DIR to the root location where the "PlxLinux" directory was created. For example, if using bash and the PlxLinux directory is in your home directory, then add the following line to the ~/.bashrc :

```
declare -x PLX_SDK_DIR=$HOME/PlxLinux
```

4. To build the ATS9360 driver, type

```
cd PlxLinux/linux/driver
./make
```

This will create the file ATS9360.ko, the loadable driver file. You can change build defines in PlxLinux/linux/makefiles/Gcc.def. Copy the driver to /usr/local/AlazarTech/bin.

5. Load the driver by rebooting the computer or typing:

```
cd /usr/local/AlazarTech/bin
ATS9360.rc start
```

You should be able to run the AlazarFrontPanel application or Acq2Disk sample in /usr/local/AlazarTech/samples.

6. If it is necessary to rebuild the library, type

```
cd PlxLinux/linux/api
make
```


This will create SharedLibrary/libPlxApi.so.0.0. Copy the file to /usr/local/AlazarTech/lib and then run ldconf

Updating ATS9360 Driver

From time to time, AlazarTech updates the device drivers for its products. These updates may be required for product enhancements or for bug fixes.

This section of the manual takes you through the steps required to update the device driver for the ATS9360 PCI Express waveform digitizer.

In other words, this section shows you how to install a newer version of the driver, when you already have a previous version of the driver installed on your machine.

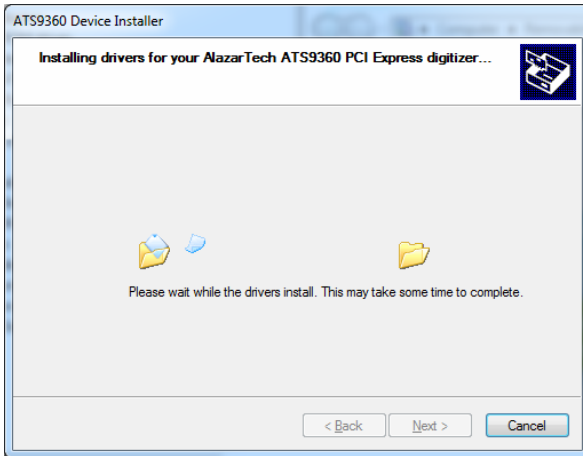
1. Download the latest driver from AlazarTech's web site:
www.alazartech.com/support/downloads.htm
2.  Unzip the downloaded file to a local folder
3. Run the resulting installation file (*.exe extension). For example, the installation file for driver version 5.8.0 is called **ATS9360_Driver_V5.8.0.exe**.

The following welcome screen will be displayed:

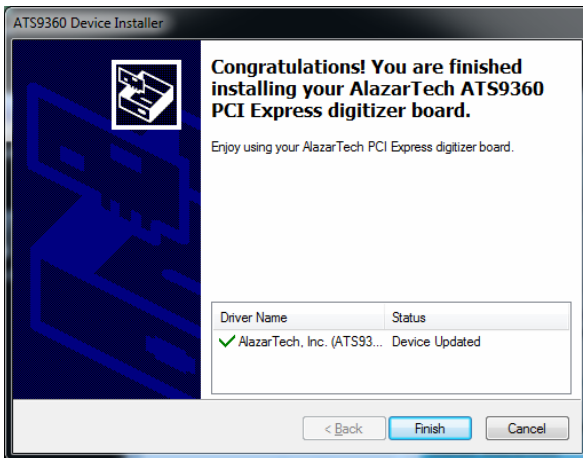


Click **Next**.

4. The following dialog box will be displayed showing the progress of installation of ATS9360 driver files.



5. The following final screen will confirm that the driver has been installed.



- a. Click **Finish**.

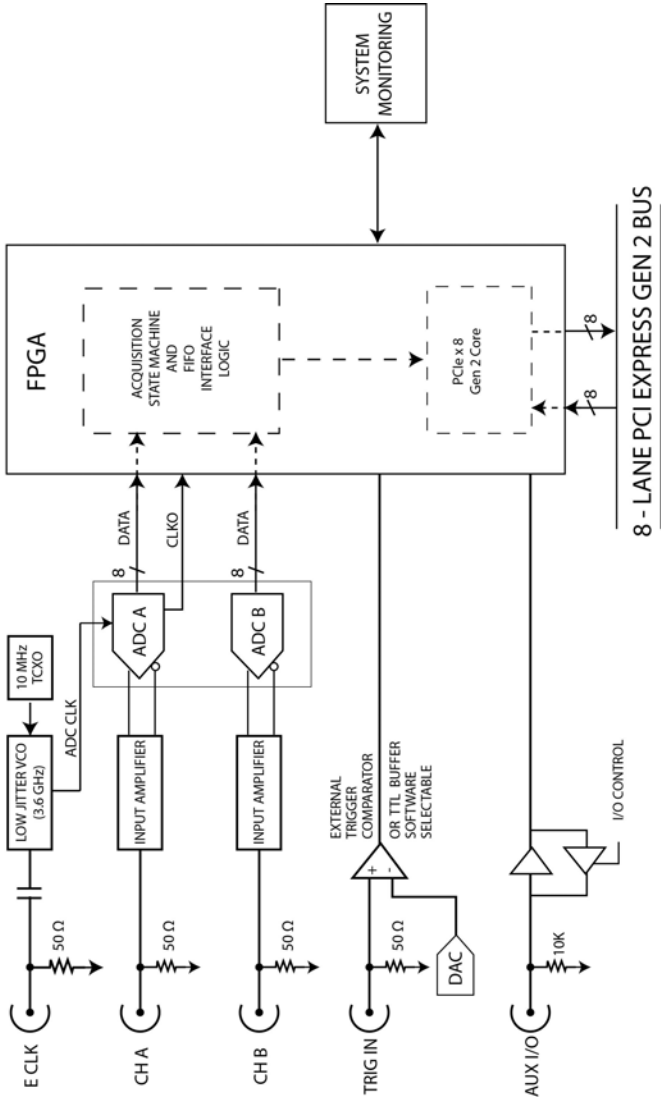
ATS9360 driver has now been updated

Chapter 3 - Hardware Overview

This chapter includes an overview of the ATS9360, explains the operation of each functional unit making up your ATS9360, and describes the signal connections.

Following is a high-level block diagram of ATS9360.

ATS9360 BLOCK DIAGRAM



Input Connectors

ATS9360 digitizers have five SMA connectors, one for ECLK (External Clock) Input, two for CH A and CH B analog input connections, one for the TRIG IN (External Trigger) input and one for AUX I/O (Auxiliary Input or Output).

The following pictorial shows the various connectors available on the digitizer bracket.



Signal Connections

You can use CH A and CH B to digitize data as well as to trigger an acquisition.

Use the TRIG IN input for an external trigger only; data on the TRIG channel cannot be digitized.

If External Clock Upgrade is installed on your ATS9360, use the ECLK input for clocking the ATS9360 in applications that require an external clock. Consult the chapter [Optional External Clock](#) for details on various types of clocking schemes available.

AUX I/O connector can be used as the following I/O's:

Outputs:

- Trigger Output
- Pacer Output
- Digital Output

Inputs:

- Trigger Enable Input
- Digital Input
- Clock Switchover Control

Analog Input

The two analog input channels are referenced to common ground in bipolar mode. These settings are fixed; therefore, neither the reference nor the polarity of input channels can be changed. You cannot use CH A or CH B to make differential measurements or measure floating signals unless you subtract the digital waveforms in software.

For accurate measurements, make sure the signal being measured is referenced to the same ground as your AT9360 by attaching the cable's ground shield to the signal ground.

The External Trigger input (labeled TRIG IN) has a ± 2.5 V analog Input range with 50Ω input impedance, or a 3.3V or 5V TTL input with $10k\Omega$ impedance.

Monolithic 12-bit ADC

ATS9360 uses a dual analog-to-digital converter with a maximum conversion rate of 1.8 GS/s on each input.

If you use an external clock, you must follow all the timing specifications on the external clock as described in Appendix A, Specifications.

Multiple Record Acquisition

The ATS9360 allows the capture of multiple records into the on-board memory. This allows you to capture rapidly occurring triggers in OCT, ultrasound or radar applications.

Note that ATS9360 allows you to acquire pre-trigger data, even when acquiring using only the on-FPGA FIFO.

Specifying Record Length

Record Length is specified in number of sample points. It must be a minimum of 256 points and can be specified with a 64-sample resolution.

Specifying Pretrigger Depth

You can acquire pre-trigger data up to 2048 points in dual channel and 4096 in single channel. Minimum value for pre-trigger amount is 0.

Specifying Record Count

User can specify the number of records that must be captured into host PC memory. The minimum value must be 1.

There is no upper limit on how many records you can capture in one acquisition.

Calibration

Calibration is the process of minimizing measurement errors by making small circuit adjustments.

All ATS9360 digitizers come factory calibrated to the levels indicated in Appendix A, Specifications. Note that AlazarTech calibration is fully NIST traceable.

However, your digitizer needs to be periodically recalibrated in order to maintain its specified accuracy. This calibration due date is listed on the CALIBRATION sticker affixed to your ATS9360 digitizer.

Externally recalibrate the ATS9360 when this calibration interval has expired.

This requires three very simple steps:

1. Verify whether or not ATS9360 is still within its specifications. If it is, then your calibration can be extended by another one-year period
2. If not, perform calibration, i.e. make adjustments to the circuit until it is within specifications again
3. If any adjustments have been made, verify if the ATS9360 is within specifications

Recalibration must be performed at AlazarTech factory.

Optional External Clock

ATS9360 PCI Express Digitizer optionally allows you to supply the ADC clock. This option is extremely important in many RF applications in which phase measurements must be made between the inputs themselves or between the inputs and an external event.

Another application that requires external clock is Optical Coherence Tomography (OCT) that sometimes requires analog sampling to take place relative to an MZI clock, sometimes also known as k-clock.

Driving high performance ADCs must be done carefully, as any injection of phase jitter through ADC clocks will result in reduction in data conversion quality.

Aside from phase noise, the clock signal for a pipelined ADC must also have a duty cycle close to 50%. This maximizes the dynamic performance of the ADC. See Fast External Clock section below for more details.

External clock input impedance is fixed at 50 Ohms.

External clock input is always AC-coupled.

There are two types of External Clock supported by ATS9360:

- Fast External Clock
- 10 MHz Clock Reference

The following paragraphs describe the two types of External Clock input and outline the restrictions on each of them.

Fast External Clock

This setting must be used when the external clock frequency is in the range of 1.8 GHz down to Lower Clock Limit.

If you purchased ATS9360: Standard External Clock Upgrade, Lower Clock Limit is 300 MHz.

If you purchased ATS9360: Screened External Clock Upgrade, Lower Clock Limit is 75 MHz.

It is highly recommended that the Fast External Clock signal have a duty cycle of 50% +/- 5%. However, duty cycle specification can be substantially relaxed at lower frequencies.

If the External Clock supplied is lower than the Lower Clock Limit, measurement quality may be compromised. Measurement errors may include gain errors, signal discontinuities and general signal distortion.

External Clock must be a at least $\pm 200\text{mV}$ sine wave or square wave signal. Maximum amplitude for external clock is $\pm 1\text{V}$.

The receiver circuit for Fast External Clock is a high speed ECL receiver that translates the input signal into a PECL (Positive ECL) clock signal that features very fast rise times.

Since Fast External Clock is always ac-coupled and self-biased, there is no need for the user to set the external clock level.

Dummy Clock Switchover is another useful feature for OCT applications that use Fast External Clock. In these applications, the user-supplied clock is not of constant frequency and may even be out of specification at certain times.

The unique Dummy Clock Switchover capability of ATS9360 allows the sampling clock to be switched to a nominal 250 MHz clock while the user-supplied clock is out of specification. User can control the switchover time by supplying an appropriate pulse to AUX I/O connector.

10 MHz Clock Reference

ATS9360 allows the user to synchronize the sampling clock to an external 10 MHz reference signal. This is useful in many RF applications.

Reference clock frequency must be 10 MHz +/- 0.25 MHz. Amplitude can be a $\pm 200\text{mV}$ sine or square wave.

In 10 MHz PLL external clock mode, the ATS9360 can generate any sample clock frequency between 300 MHz and 1800 MHz that is a multiple of 1 MHz.

Streaming Data Across the Bus

One of the most unique features of the ATS9360 is its on-board, dual-port FIFO and the associated Dual-DMA engine.

This combined by the advanced, fully asynchronous software driver allows data transfer to host PC memory without any appreciable “in-process” software involvement.

These features are particularly useful for applications that require:

a) Continuous, gapless data capture. Also known as “Data Streaming” to PC host memory or hard disk

or

b) Data capture from rapidly occurring triggers, also known as Pulse Repeat Frequency Captures or PRF Captures.

In order to understand these sophisticated features, let us first review some of the issues involved in transferring data under Windows or Linux operating systems.

The Effects of the Operating System

Windows and Linux are not real-time operating systems, i.e. the operating system cannot guarantee a deterministic response time to an event, such as an interrupt or a software generated event.

This means that if software has to play any appreciable part in data transfer, then the data throughput cannot be guaranteed, as the operating system will have the last say as to when the data collection application will get the CPU cycles to execute the necessary commands.

Note that the above is true even if the digitizer claims to use Direct Memory Access (DMA) to do the actual transfer, but uses software commands to re-arm the digitizer. It is the re-arm command that will determine the overall data throughput.

For example, it is very common for PCI digitizers that boast very fast throughput to slow down considerably when capturing pulsed radar or ultrasonic signals at Pulse Repeat Frequency (PRF) of 1 KHz or so, even though each capture is only 2048 bytes (a paltry 2 MB/s throughput).

In other words, digitizers that specify raw data throughput of 100 MB/s can hardly handle 2MB/s effective throughput due to operating system related delays in issuing re-arm commands.

Real-Time Operating Systems

Some vendors claim that switching to a real-time operating system (RTOS) can solve the problems involved in PRF data capture.

Before switching to an expensive RTOS (such as VxWorks, QNX or PharLap ETS), ask the vendor of the operating system, the supplier of your PC system and manufacturer of the digitizer board if they are all guaranteed to be 100% compatible and interoperable with each other with deterministic interrupt latencies and if you will get your money back if the system does not work at your PRF rates with your software.

Here is an excerpt from a FAQ section of one such supplier of RTOS:

Question: How do system configuration and CPU selection impact the interrupt latency?

Answer: Hardware platforms and the configuration of the associated drivers that use the hardware do impact response times. Some of the common issues include:

Video cards - some of the higher-end cards lock-out (or busy-wait) the bus for extended periods of time to improve their performance.

DMA devices - devices which burst DMA for lengthy period.

Power management which cycles off the CPU during IDLE CPU periods.

Memory speeds, processor speeds, etc.

A PCI or PCI Express digitizer being used in a PRF or streaming application is, by definition, doing "burst DMA for lengthy period", and is a type of product that can negatively impact response times of the RTOS.

As such, the claim that an RTOS can remove all timing uncertainties in PRF application is suspect, to say the least.

Furthermore, you may not be able to get software drivers for the selected RTOS for all the hardware components you need for your system.

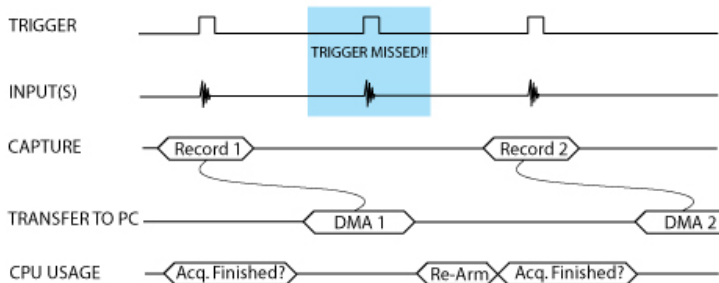
In summary, moving to a real-time operating system will not guarantee data throughput, but will surely increase the overall system cost, increase the cost of software development and maintenance and limit the number of suppliers for other hardware components.

Dual Port Memory

The basic throughput problem faced by digitizers is that almost all of them use single-port memory, i.e. if you are reading data from the acquisition memory, you cannot capture into it and vice-versa.

This requires a software handshake which is heavily dependent on the operating system response time.

TRIGGERED DATA ACQUISITION USING SINGLE-PORT MEMORY

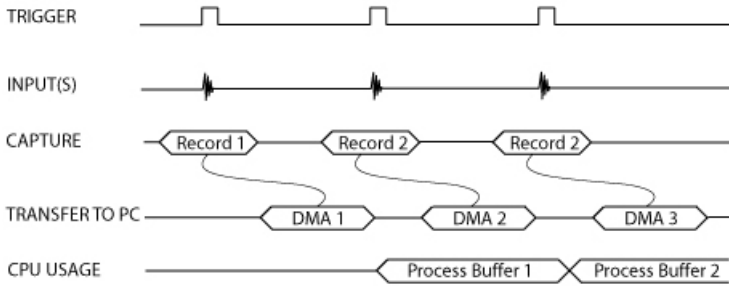


NOTE 1: Some Trigger events may be missed while data is being off-loaded from on-board memory

NOTE 2: Virtually all CPU cycles are used up in managing data acquisition. Very little left for for data processing

ATS9360 solves this problem by providing a FIFO and an advanced dual-DMA engine that can stream data to PC host memory at up to 3.5 GB/s (exact rate is motherboard dependent).

TRIGGERED DATA ACQUISITION USING DUAL-PORT MEMORY



NOTE 1: No Trigger Events Are Missed - Guaranteed

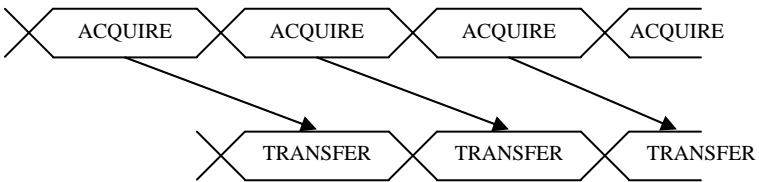
NOTE 2: Over 95% of CPU cycles are available for data processing

Bottom line is that software does not have to wait until the end of data capture to read the acquired data.

AutoDMA

Just having a FIFO, on its own, does not solve the problem of PRF captures or streaming applications. Software still has to get involved in re-arming the hardware after every capture and again for reading the data from on-board acquisition memory.

ATS9360's proprietary AutoDMA circuitry allows the acquisition system to be re-armed by a hardware command and data transfer to be initiated by the hardware itself, thus removing virtually all "in-process" software involvement.



Of course, software still has to set up the DMA when one of the buffers fills up, but, thanks to the dual-DMA engine and fully asynchronous driver that uses overlapped IO, these tasks can be paralleled.

In other words, when software is re-arming DMA channel 0, DMA channel 1 is already transferring data to host memory.

Note that if data throughput is too high, a `DMA_OVERFLOW` flag gets set and is available to the programmer.

Consumption of the captured data is, of course, under the control of user-created software, and it is this that will determine the maximum PRF instead of the bus throughput.

The important thing to note is that if asynchronous DMA is used, CPU usage is no more than 5%, even if a 3.5 GB/s DMA is going on.

No Pre-Trigger (NPT) AsyncDMA

Many ultrasonic scanning and medical imaging applications do not need any pre-trigger data: only post-trigger data is sufficient.

NPT AutoDMA is designed specifically for these applications. By only storing post-trigger data, the memory bandwidth is optimized and the entire on-board memory acts like a very deep FIFO.

Note that a DMA is not started until RecordsPerBuffer number of records (triggers) have been acquired.

NPT AutoDMA buffers do not include headers, so it is not possible to get trigger time-stamps.

More importantly, a BUFFER_OVERFLOW flag is asserted only if the entire on-board memory is used up. This provides a very substantial improvement over Traditional AutoDMA.

NPT AutoDMA can easily acquire data to PC host memory at the maximum sustained transfer rate of the motherboard without causing an overflow.

This is the recommended mode of operation for most ultrasonic scanning, OCT and medical imaging applications.

Continuous AsyncDMA

Continuous AutoDMA is also known as the data streaming mode.

In this mode, data starts streaming across the PCIe bus as soon as the ATS9360 is armed for acquisition. It is important to note that triggering is disabled in this mode.

Continuous AutoDMA buffers do not include headers, so it is not possible to get trigger time-stamps.

A BUFFER_OVERFLOW flag is asserted only if the entire on-board memory is used up.

The amount of data to be captured is controlled by counting the number of buffers acquired. Acquisition is stopped by an AbortCapture command.

Continuous AutoDMA can easily acquire data to PC host memory at the maximum sustained transfer rate of the motherboard without causing an overflow.

This is the recommended mode for very long signal recording.

Triggered Streaming AsyncDMA

Triggered Streaming AutoDMA is virtually the same as Continuous mode, except the data transfer across the bus is held off until a trigger event has been detected.

Triggered Streaming AutoDMA buffers do not include headers, so it is not possible to get trigger time-stamps. A `BUFFER_OVERFLOW` flag is asserted only if the entire on-board memory is used up.

As in Continuous mode, the amount of data to be captured is controlled by counting the number of buffers acquired.

Acquisition is stopped by an `AbortCapture` command.

Triggered Streaming AutoDMA can easily acquire data to PC host memory at the maximum sustained transfer rate of the motherboard without causing an overflow.

This is the recommended mode for RF signal recording that has to be started at a specific time, e.g. based on a GPS pulse.

Stream To Disk

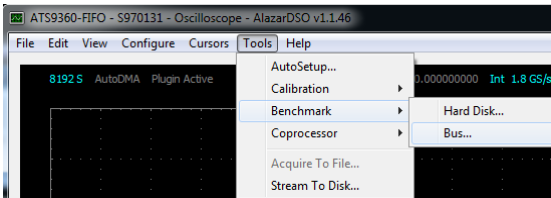
Any one of the AutoDMA modes can be combined with a fast disk drive to create a very efficient and low cost data streaming system.

AlazarDSO Stream To Disk module (sold separately) allows out-of-the-box disk streaming. No programming is required. Note, however, that the speed with which data can be stored to memory will be limited by the **lower** of:

1. ATS9360 Bus Throughput (3.5 GB/s)
2. PCI Express throughput supported by the motherboard
3. Sustained Throughput of the disk drive system

AlazarDSO includes a Disk Throughput Benchmarking tool, using which you can quickly and easily see how fast your disk drives are.

Accessed by clicking on Tools » Benchmark » Bus...



Files are saved as ATB format binary files, and can automatically be converted to text files or MATLAB compatible files.

For more information on complete disk streaming systems, please contact the factory or your local distributor.

	CAPACITY	WRITE SPEED
RAM Disk	Few 10's GB	> 5.0 GB/s
PCIe SSD	Upto 800 GB	~ 1.4 GB/s
RAID SSD	2 TB	2.8 GB/s
RAID HDD SAS	40 TB	2.3 GB/s

Appendix A - Specifications

This appendix lists the specifications of the ATS9360. These specifications are typical at 25 °C unless otherwise stated. The operating temperature range is 0 to 50 °C.

System Requirements

Personal computer with at least one free x8 or x16 PCI Express slot (must be Gen 2 or Gen 3 slot to achieve full data throughput), 4 GB RAM, 100 MB of free hard disk space,

PCI Express revision	2.0a or higher
Transceiver speed	5 Gbps
Number of lanes	8
Compatibility - mechanical	x8 and x16 slots
Compatibility - electrical	x1, x4, x8 and x16 slots

Power Requirements

+12V	1.3 A, typical
+3.3V	2.9 A, typical

Physical

Size	Single slot, half-length PCI card (4.2 inches x 6.5 inches)
Weight	250 g

I/O Connectors

ECLK, CH A, CH B, TRIG IN, AUX I/O	SMA female connectors
---------------------------------------	-----------------------

Environmental

Operating temperature	0 to 55 °C
Storage temperature	-20 to 70 °C
Relative humidity	5 to 95%, non-condensing

Acquisition System

Resolution	12 bits
Bandwidth (-3dB)	
DC-coupled, 50 Ω	DC - 800 MHz
Number of channels	2 simultaneously sampled
Maximum Sample Rate	1.8 GS/s single shot
Minimum Sample Rate	1 KS/s single shot for internal clocking
Full Scale Input ranges	
50 Ω :	$\pm 400\text{mV}$
DC accuracy	$\pm 2\%$ of full scale in all input ranges
Input coupling	DC
Input impedance	50 $\Omega \pm 1\%$
Input protection	
50 Ω	$\pm 4\text{V}$ (DC + peak AC for CH A, CH B and EXT only without external attenuation)

Acquisition Memory System

Memory Size	Uses on-FPGA FIFO
Record Length	Software selectable with 64-point resolution. Record length must be a minimum of 256 points. There is no upper limit on the maximum record length.
Number of Records	Software selectable from a minimum of 1 to a maximum of infinite number of records
Pre-trigger depth	From 0 to 4096
Post-trigger depth	Record Length – Pre-Trigger Depth

Timebase System

Timebase options	Internal Clock or External Clock (Optional)
Internal Sample Rates	1.8 GS/s, 1.5 GS/s, 1.2 GS/s, 1 GS/s, 800 MS/s, 500 MS/s, 200 MS/s, 100 MS/s, 50 MS/s, 20 MS/s, 10 MS/s, 5 MS/s, 2 MS/s, 1 MS/s, 500 KS/s, 200 KS/s, 100 KS/s, 50 KS/s, 20 KS/s, 10 KS/s, 5 KS/s, 2 KS/s, 1 KS/s
Internal Clock accuracy	±2 ppm

Dynamic Parameters

Typical values measured on the 200 mV range of CH A of a randomly selected ATS9360. Input signal was provided by a Marconi 2018A signal generator, followed by a 9-pole, 10 MHz band-pass filter (TTE Q36T-10M-1M-50-720BMF). Input frequency was set at 9.9 MHz and output amplitude was 135 mV rms, which was approximately 95% of the full scale input.

Input was averaged

SNR	57.1 dB
SINAD	56.6 dB

Note that these dynamic parameters may vary from one unit to another, with input frequency and with the full scale input range selected.

Optional ECLK (External Clock) Input

Signal Level	$\pm 200\text{mV}$ Sine wave or square wave minimum. $\pm 1\text{V}$ max.
Input impedance	50Ω
Input Coupling	AC
Maximum frequency	1.8 GHz for Fast External Clock
10 MHz Clock Reference:	10.1 MHz
Minimum frequency	300 MHz for Fast External Clock
10 MHz Clock Reference:	9.9 MHz
Sampling Edge	Rising
Sample Rates Available With 10 MHz Clock Reference:	1.8 GS/s

Note that the accuracy and stability of these sampling frequencies is dependent on the accuracy and stability of the 10 MHz Clock Reference input supplied by the user

Triggering System

Mode	Edge triggering with hysteresis
Number of Trigger Engines	2
Trigger Engine Combination	OR
Trigger Engine Source	CH A, CH B, EXT, Software or None, independently software selectable for each of the two Trigger Engines
Hysteresis	$\pm 5\%$ of full-scale input, typical
Trigger sensitivity	$\pm 10\%$ of full scale input range. This implies that the trigger system may not trigger reliably if the input has an amplitude less than $\pm 10\%$ of full-scale input range selected
Trigger level accuracy	$\pm 5\%$, typical, of full-scale input range of the selected trigger source

Bandwidth	250 MHz
Trigger Delay	Software selectable from 0 to 9,999,999 sampling clock cycles
Trigger Timeout	Software selectable with a 10 us resolution. Maximum settable value is 3,600 seconds. Can also be disabled to wait indefinitely for a trigger event

TRIG IN (External Trigger) Input

Input impedance	50 Ω for ± 2.5 V range 2 K Ω for TTL input
Bandwidth (-3dB)	DC - 250 MHz
Input range	± 2.5 V or TTL Input, software selectable
DC accuracy	$\pm 10\%$ of full-scale input
Input protection	± 8 V (DC + peak AC without external attenuation)
Coupling	DC only

TRIG OUT Output

Connector Used	AUX I/O
Output Signal	5 Volt TTL
Synchronization:	Synchronized to a clock derived from the ADC sampling clock. Divide-by-4 clock (dual channel mode) or divide-by-8 clock (single channel mode)

Certification and Compliances

CE Mark Compliance

Materials Supplied

- One ATS9360 PCI Express Card
- One ATS9360 Install Disk on USB flash drive
- One ATS9360 User Manual

All specifications are subject to change without notice

Appendix B - Benchmarks

This appendix lists the data throughput measured by our technicians on various computers and motherboards under different operating systems.

- Given the constantly changing nature of computers, these benchmarks are provided as a reference only and AlazarTech assumes no liability in case the computer you purchase behaves differently than what was observed in AlazarTech's laboratory.

Model	Chipset	Slot	Throughput
ASRock Extreme 11	Intel X79	PCIe x16	3.5 GB/s
ASUS P9X79	Intel X79	PCIe x16	3.5 GB/s
HP Z800	Intel Xeon	PCIe x16	3.4 GB/s
HP Compaq 6200 Pro	Intel i3-2100	PCIe x8	3.1 GB/s

Operating System tested under: Windows 7 64-bit



ALAZAR TECHNOLOGIES INC.
6600 Trans-Canada Highway, Suite 310
Pointe-Claire, QC
CANADA H9R 4S2

Tel: (514) 426-4899

Fax: (514) 426-2723

E-mail: info@alazartech.com

Web: www.alazartech.com